

Anti-GSDMB antibody [EPR20841] ab215729

リコンビナント **RabMAb**

2 References [画像数 6](#)

製品の概要

製品名	Anti-GSDMB antibody [EPR20841]
製品の詳細	Rabbit monoclonal [EPR20841] to GSDMB
由来種	Rabbit
アプリケーション	適用あり: WB, IP, Flow Cyt (Intra)
種交差性	交差種: Human
免疫原	Recombinant full length protein within Human GSDMB. The exact sequence is proprietary. Database link: Q8TAX9
ポジティブ・コントロール	WB: HEK-293T transfected with human DDDDK tagged GSDMB expression vector whole cell lysate; A431 whole cell lysate. Flow Cyt (intra): A431 cells. IP: HEK-293T transfected with DDDDK tagged GSDMB expression vector whole cell lysate.
特記事項	<p>This antibody was developed in collaboration with Dr Feng Shao's lab, NIBS.</p> <p>This product is a recombinant monoclonal antibody, which offers several advantages including:</p> <ul style="list-style-type: none">- High batch-to-batch consistency and reproducibility- Improved sensitivity and specificity- Long-term security of supply- Animal-free production <p>For more information see here.</p> <p>Our RabMAb[®] technology is a patented hybridoma-based technology for making rabbit monoclonal antibodies. For details on our patents, please refer to RabMAb[®] patents.</p>

製品の特性

製品の状態	Liquid
保存方法	Shipped at 4°C. Store at +4°C short term (1-2 weeks). Upon delivery aliquot. Store at -20°C long term. Avoid freeze / thaw cycle.
バッファー	pH: 7.2 Preservative: 0.01% Sodium azide Constituents: 0.05% BSA, 40% Glycerol (glycerin, glycerine), PBS
精製度	Protein A purified
ポリ/モノ	モノクローナル

クローン名 EPR20841
アイソタイプ IgG

アプリケーション

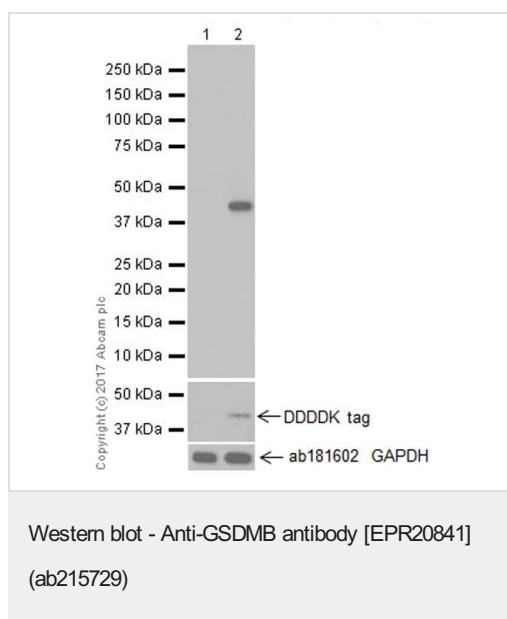
The Abpromise guarantee Abpromise保証は、次のテスト済みアプリケーションにおけるab215729の使用に適用されます
アプリケーションノートには、推奨の開始希釈率がありますが、適切な希釈率につきましてはご検討ください。

アプリケーション	Abreviews	特記事項
WB		1/1000. Detects a band of approximately 46 kDa (predicted molecular weight: 46 kDa).
IP		1/30.
Flow Cyt (Intra)		1/600.

ターゲット情報

機能	The N-terminal moiety promotes pyroptosis. May be acting by homooligomerizing within the membrane and forming pores (PubMed:27281216). The physiological relevance of this observation is unknown.
組織特異性	In the gastrointestinal tract, expressed in proliferating cells, including in the basal cell layer of esophagus and in isthmus/neck of stomach.
配列類似性	Belongs to the gasdermin family.
ドメイン	Intramolecular interactions between N- and C-terminal domains may be important for autoinhibition in the absence of activation signal. The intrinsic pyroptosis-inducing activity is carried by the N-terminal domain.
細胞内局在	Cytoplasm. Cytoplasm, cytosol. Cell membrane. Vesicular localization in the apical region of gastric chief cells and colonic surface mucous cells, and the basal region of neuroendocrine cells.
製品の状態	There are 5 isoforms produced by alternative splicing.

画像



All lanes : Anti-GSDMB antibody [EPR20841] (ab215729) at 1/1000 dilution

Lane 1 : HEK-293T (human epithelial cell line from embryonic kidney transformed with large T antigen), transfected with an empty vector (vector control), containing a DDDDK tag, whole cell lysate

Lane 2 : HEK-293T (human epithelial cell line from embryonic kidney transformed with large T antigen), transfected with human DDDDK tagged GSDMB expression vector, whole cell lysate

Lysates/proteins at 10 µg per lane.

Secondary

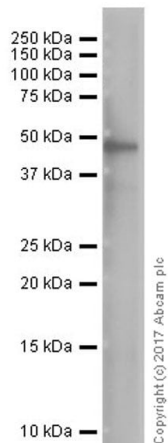
All lanes : Goat Anti-Rabbit IgG H&L (HRP) ([ab97051](#)) at 1/100000 dilution

Developed using the ECL technique.

Predicted band size: 46 kDa

Observed band size: 46 kDa

Exposure time: 10 seconds



Western blot - Anti-GSDMB antibody [EPR20841] (ab215729)

Anti-GSDMB antibody [EPR20841] (ab215729) at 1/1000 dilution + A431 (human epidermoid carcinoma cell line) whole cell lysate at 10 µg

Secondary

Goat Anti-Rabbit IgG H&L (HRP) ([ab97051](#)) at 1/20000 dilution

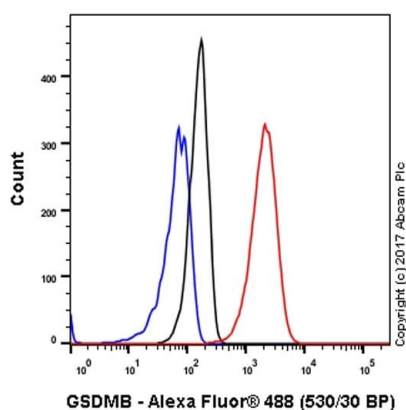
Developed using the ECL technique.

Predicted band size: 46 kDa

Observed band size: 46 kDa

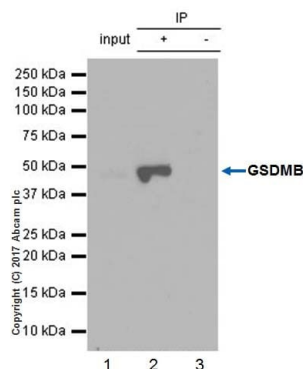
Exposure time: 30 seconds

Blocking/Dilution buffer: 5% NFDm/TBST.



Flow Cytometry (Intracellular) - Anti-GSDMB antibody [EPR20841] (ab215729)

Intracellular flow cytometric analysis of 4% paraformaldehyde-fixed, 90% methanol permeabilized A431 (human epidermoid carcinoma cell line) cell line labeling GSDMB with ab215729 at 1/600 dilution (red) compared with a Rabbit IgG, monoclonal [EPR25A] - Isotype Control ([ab172730](#)) (black) and an unlabeled control (cells without incubation with primary antibody and secondary antibody) (blue). Goat Anti-Rabbit IgG H&L (Alexa Fluor® 488) ([ab150077](#)) at 1/2000 dilution was used as the secondary antibody.



Immunoprecipitation - Anti-GSDMB antibody
[EPR20841] (ab215729)

GSDMB was immunoprecipitated from 0.35 mg of A431 (human epidermoid carcinoma cell line) whole cell lysate with ab215729 at 1/30 dilution. Western blot was performed from the immunoprecipitate using ab215729 at 1/500 dilution. VeriBlot for IP Detection Reagent (HRP) ([ab131366](#)), was used for detection at 1/1,000 dilution

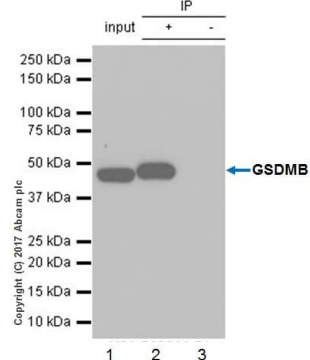
Lane 1: A431 whole cell lysate 10 µg (Input).

Lane 2: ab215729 IP in A431 whole cell lysate.

Lane 3: Rabbit monoclonal IgG ([ab172730](#)) instead of ab215729 in A431 whole cell lysate.

Blocking and dilution buffer and concentration: 5% NFDM/TBST.

Exposure time: 3 minutes.



Immunoprecipitation - Anti-GSDMB antibody
[EPR20841] (ab215729)

GSDMB was immunoprecipitated from 0.35 mg of HEK-293T (human epithelial cell line from embryonic kidney transformed with large T antigen) transfected with DDDDK tagged GSDMB expression vector, whole cell lysate with ab215729 at 1/30 dilution. Western blot was performed from the immunoprecipitate using ab215729 at 1/1000 dilution. VeriBlot for IP Detection Reagent (HRP) ([ab131366](#)), was used for detection at 1/10,000 dilution

Lane 1: HEK-293T transfected with DDDDK tagged GSDMB expression vector, whole cell lysate 10 µg (Input).


Lane 2: ab215729 IP in HEK-293T transfected with DDDDK tagged GSDMB expression vector, whole cell lysate.

Lane 3: Rabbit monoclonal IgG ([ab172730](#)) instead of ab215729 in HEK-293T transfected with DDDDK tagged GSDMB expression vector, whole cell lysate.

Blocking and dilution buffer and concentration: 5% NFDM/TBST.

Exposure time: 3 minutes.

Why choose a recombinant antibody?

 <p>Research with confidence Consistent and reproducible results</p>	 <p>Long-term and scalable supply Recombinant technology</p>
 <p>Success from the first experiment Confirmed specificity</p>	 <p>Ethical standards compliant Animal-free production</p>

Anti-GSDMB antibody [EPR20841] (ab215729)

Please note: All products are "FOR RESEARCH USE ONLY. NOT FOR USE IN DIAGNOSTIC PROCEDURES"

Our Abpromise to you: Quality guaranteed and expert technical support

- Replacement or refund for products not performing as stated on the datasheet
- Valid for 12 months from date of delivery
- Response to your inquiry within 24 hours
- We provide support in Chinese, English, French, German, Japanese and Spanish
- Extensive multi-media technical resources to help you
- We investigate all quality concerns to ensure our products perform to the highest standards

If the product does not perform as described on this datasheet, we will offer a refund or replacement. For full details of the Abpromise, please visit <https://www.abcam.co.jp/abpromise> or contact our technical team.

Terms and conditions

- Guarantee only valid for products bought direct from Abcam or one of our authorized distributors