

# Anti-Grp75/MOT antibody [9F8] ab171089

**4 References** [画像数 6](#)

### 製品の概要

---

製品名	Anti-Grp75/MOT antibody [9F8]
製品の詳細	Mouse monoclonal [9F8] to Grp75/MOT
由来種	Mouse
アプリケーション	<b>適用あり:</b> WB, ICC/IF, IP
種交差性	<b>交差種:</b> Rat, Human, African green monkey
免疫原	Recombinant full length protein corresponding to Human Grp75/MOT. Expressed in 293T cells. Database link: <a href="#">Q8N1C8</a>
ポジティブ・コントロール	WB: HEK-293T, HeLa, K-562, A-431, COS7, NRK, HeLa, HepG2, MCF7, COS7, L6 cell lysates, Rat brain, Rat skeletal muscle and Rat liver tissue extracts. ICC: HeLa cells.
特記事項	<p>The Life Science industry has been in the grips of a reproducibility crisis for a number of years. Abcam is leading the way in addressing this with our range of recombinant monoclonal antibodies and knockout edited cell lines for gold-standard validation. Please check that this product meets your needs before purchasing.</p> <p>If you have any questions, special requirements or concerns, please send us an inquiry and/or contact our Support team ahead of purchase. Recommended alternatives for this product can be found below, along with publications, customer reviews and Q&amp;As</p>

### 製品の特性

---

製品の状態	Liquid
保存方法	Shipped at 4°C. Store at +4°C short term (1-2 weeks). Upon delivery aliquot. Store at -20°C long term. Avoid freeze / thaw cycle.
バッファー	Preservative: 0.05% Sodium azide Constituents: 0.1% BSA, 30% Glycerol (glycerin, glycerine), 69% PBS
精製度	Protein A purified
ポリ/モノ	モノクローナル
クローン名	9F8
アイソタイプ	IgG

### アプリケーション

## The Abpromise guarantee

**Abpromise保証は、次のテスト済みアプリケーションにおけるab171089の使用に適用されます**

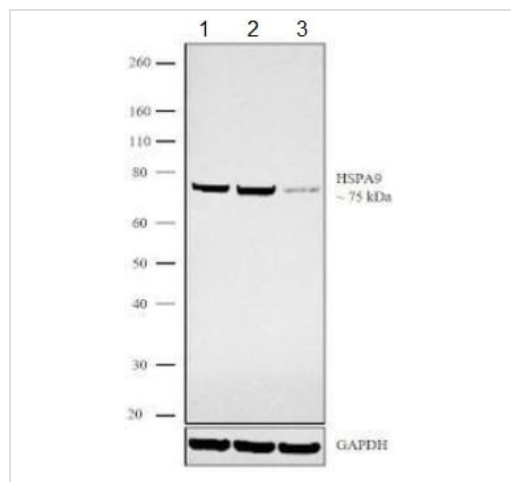
アプリケーションノートには、推奨の開始希釈率がありますが、適切な希釈率につきましてはご検討ください。

アプリケーション	Abreviews	特記事項
WB		1/1000. Predicted molecular weight: 74 kDa.
ICC/IF		1/50.
IP		Use at an assay dependent concentration. Use 2µg.

## ターゲット情報

機能	Implicated in the control of cell proliferation and cellular aging. May also act as a chaperone.
配列類似性	Belongs to the heat shock protein 70 family.
翻訳後修飾	Phosphorylated upon DNA damage, probably by ATM or ATR.
細胞内局在	Mitochondrion.

## 画像



Western blot - Anti-Grp75/MOT antibody [9F8]  
(ab171089)

**All lanes** : Anti-Grp75/MOT antibody [9F8] (ab171089) at 1/1000 dilution

**Lane 1** : Untransfected HeLa cells

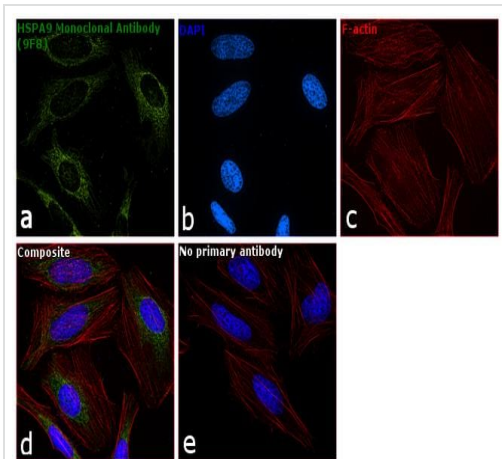
**Lane 2** : HeLa cells transfected with scrambled siRNA

**Lane 3** : HeLa cells transfected with Grp75/MOT siRNA

### Secondary

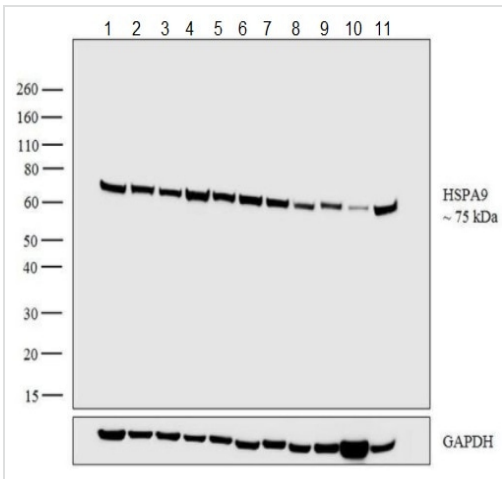
**All lanes** : Goat anti-Mouse IgG (H+L) HRP conjugate at 1/4000 dilution

**Predicted band size:** 74 kDa



Immunocytochemistry/ Immunofluorescence - Anti-Grp75/MOT antibody [9F8] (ab171089)

Immunofluorescence analysis of Grp75/MOT was performed using 70% confluent log phase HeLa cells. The cells were fixed with 4% paraformaldehyde for 10 minutes, permeabilized with 0.1% Triton™ X-100 for 15 minutes, and blocked with 1% BSA for 1 hour at room temperature. The cells were labeled with ab171089 at 1:50 dilution in 0.1% BSA, incubated at 4°C overnight and then labeled with Goat anti-Mouse IgG (H+L) Secondary Antibody, Alexa Fluor® 488 conjugate at a dilution of 1:2000 for 45 minutes at room temperature (Panel a: green). Nuclei (Panel b: blue) were stained with DAPI. F-actin (Panel c: red) was stained with Rhodamine Phalloidin. Panel d represents the merged image showing mitochondrial localization. Panel e represents control cells with no primary antibody to assess background. The images were captured at 60X magnification.



Western blot - Anti-Grp75/MOT antibody [9F8] (ab171089)

**All lanes :** Anti-Grp75/MOT antibody [9F8] (ab171089) at 1/1000 dilution

**Lane 1 :** HeLa (Human cervix adenocarcinoma epithelial cell) whole cell lysate

**Lane 2 :** HEK-293 (Human epithelial cell line from embryonic kidney) whole cell lysate

**Lane 3 :** A-431 (Human epidermoid carcinoma cell line) whole cell lysate

**Lane 4 :** K-562 (Human chronic myelogenous leukemia lymphoblast cell line ) whole cell lysate

**Lane 5 :** Hep G2 (Human liver hepatocellular carcinoma cell line) whole cell lysate

**Lane 6 :** MCF7 (Human breast adenocarcinoma cell line) whole cell lysate

**Lane 7 :** COS-7 (African green monkey kidney fibroblast-like cell line) cell lysate

**Lane 8 :** L6 (Rat skeletal muscle cell line) whole cell lysate

**Lane 9 :** Rat brain cell lysate

**Lane 10 :** Rat skeletal muscle cell lysate

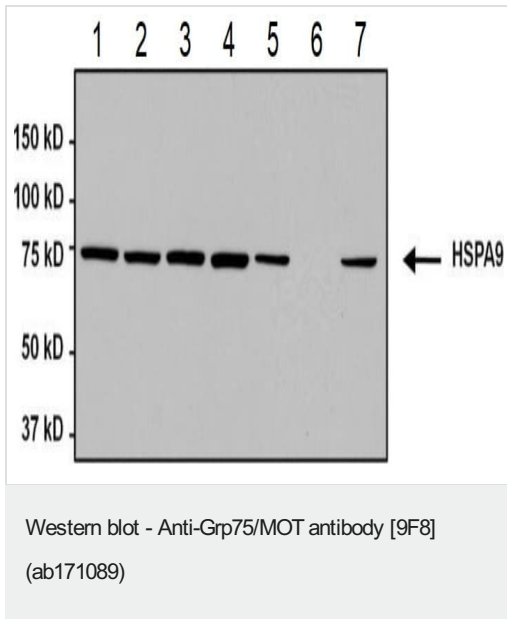
**Lane 11 :** Rat liver cell lysate

Lysates/proteins at 30 µg per lane.

### Secondary

**All lanes** : Goat anti-Mouse IgG (H+L) HRP conjugate at 1/4000 dilution

**Predicted band size:** 74 kDa



**All lanes** : Anti-Grp75/MOT antibody [9F8] (ab171089) at 1/1000 dilution

**Lane 1** : HEK-293T (Human epithelial cell line from embryonic kidney transformed with large T antigen) whole cell lysate

**Lane 2** : HeLa (Human cervix adenocarcinoma epithelial cell) whole cell lysate

**Lane 3** : K-562 (Human chronic myelogenous leukemia lymphoblast cell line ) whole cell lysate

**Lane 4** : A-431 (Human epidermoid carcinoma cell line) whole cell lysate

**Lane 5** : COS-7 (African green monkey kidney fibroblast-like cell line) whole cell lysate

**Lane 6** : NIH/3T3 (Mouse embryonic fibroblast cell line) whole cell lysate

**Lane 7** : NRK (Rat kidney cell line) whole cell lysate

Lysates/proteins at 50 µg per lane.

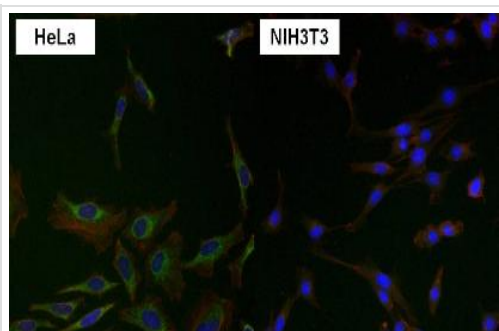
### Secondary

**All lanes** : Goat anti-Mouse HRP at 1/20000 dilution

Developed using the ECL technique.

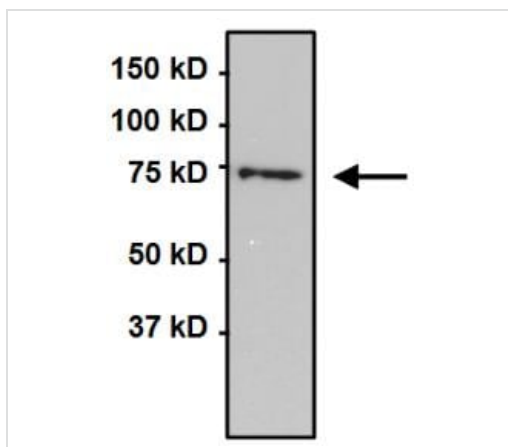
**Predicted band size:** 74 kDa

4-20% Tris-HCL polyacrylamide gel



Immunocytochemistry/ Immunofluorescence - Anti-Grp75/MOT antibody [9F8] (ab171089)

Immunofluorescent analysis of HeLa cells labeling Grp75/MOT with ab171089 at 1/50 dilution (green) compared to negative control NIH3T3 cells.



Immunoprecipitation - Anti-Grp75/MOT antibody [9F8] (ab171089)

Detection of Grp75/MOT in Immunoprecipitates of HeLa whole cell lysates using ab171089 at 2µg per 750µg lysate. Detected with ab171089 at 1/1000 dilution.

**Please note:** All products are "FOR RESEARCH USE ONLY. NOT FOR USE IN DIAGNOSTIC PROCEDURES"

### Our Abpromise to you: Quality guaranteed and expert technical support

- Replacement or refund for products not performing as stated on the datasheet
- Valid for 12 months from date of delivery
- Response to your inquiry within 24 hours
- We provide support in Chinese, English, French, German, Japanese and Spanish
- Extensive multi-media technical resources to help you
- We investigate all quality concerns to ensure our products perform to the highest standards

If the product does not perform as described on this datasheet, we will offer a refund or replacement. For full details of the Abpromise, please visit <https://www.abcam.co.jp/abpromise> or contact our technical team.

## Terms and conditions

---

- Guarantee only valid for products bought direct from Abcam or one of our authorized distributors