

Anti-groES antibody ab69823

4 References [画像数 1](#)

製品の概要

製品名	Anti-groES antibody
製品の詳細	Rabbit polyclonal to groES
由来種	Rabbit
アプリケーション	適用あり: WB, IP
種交差性	交差種: Escherichia coli
免疫原	Full length protein corresponding to Escherichia coli groES. Strain K12 Database link: P0A6F9
特記事項	<p>The Life Science industry has been in the grips of a reproducibility crisis for a number of years. Abcam is leading the way in addressing this with our range of recombinant monoclonal antibodies and knockout edited cell lines for gold-standard validation. Please check that this product meets your needs before purchasing.</p> <p>If you have any questions, special requirements or concerns, please send us an inquiry and/or contact our Support team ahead of purchase. Recommended alternatives for this product can be found below, along with publications, customer reviews and Q&As</p>

製品の特性

製品の状態	Liquid
保存方法	Shipped at 4°C. Upon delivery aliquot and store at -20°C or -80°C. Avoid repeated freeze / thaw cycles.
バッファー	Constituent: Whole serum
精製度	Whole antiserum
ポリ/モノ	ポリクローナル
アイソタイプ	IgG

アプリケーション

The Abpromise guarantee **Abpromise保証は、次のテスト済みアプリケーションにおけるab69823の使用に適用されます**
 アプリケーションノートには、推奨の開始希釈率がありますが、適切な希釈率につきましてはご検討ください。

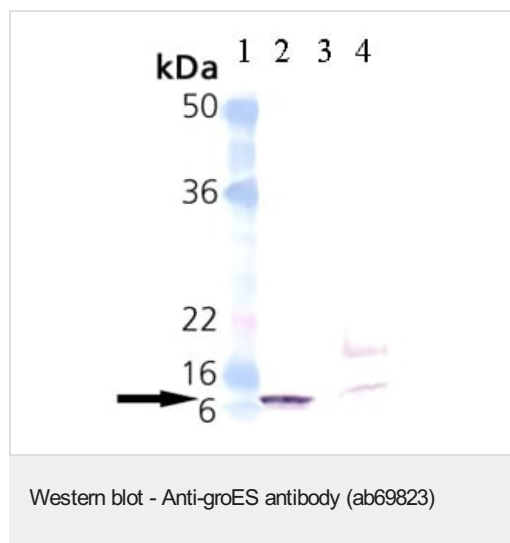
アプリケーション	Abreviews	特記事項
WB		1/5000. Detects a band of approximately 10 kDa (predicted molecular weight: 10 kDa). for colorimetric detection. 1/500 for ECL.
IP		1/200.

ターゲット情報

関連性 GroEL and GroES are E.coli chaperones, which are homologs of the mitochondrial chaperones Hsp60 and Hsp10 respectively. GroEL is a double toroidal assembly of 14 identical subunits which form two heptameric rings stacked back-to-back, with a cavity at each end. GroEL and its co-chaperonin GroES facilitate protein folding in an ATP-dependent mechanism. Binding of substrate protein, in addition to binding of ATP, induces a conformational change that allows association of this binary complex with a separate lid structure, GroES.

細胞内局在 Cytoplasmic

画像



All lanes : Anti-groES antibody (ab69823) at 1/5000 dilution

Lane 1 : Molecular weight marker

Lane 2 : groES recombinant E. coli protein

Lane 3 : No lysates (empty)

Lane 4 : Lysates prepared from E.coli

Predicted band size: 10 kDa

Please note: All products are "FOR RESEARCH USE ONLY. NOT FOR USE IN DIAGNOSTIC PROCEDURES"

Our Abpromise to you: Quality guaranteed and expert technical support

- Replacement or refund for products not performing as stated on the datasheet
- Valid for 12 months from date of delivery
- Response to your inquiry within 24 hours
- We provide support in Chinese, English, French, German, Japanese and Spanish
- Extensive multi-media technical resources to help you
- We investigate all quality concerns to ensure our products perform to the highest standards

If the product does not perform as described on this datasheet, we will offer a refund or replacement. For full details of the Abpromise, please visit <https://www.abcam.co.jp/abpromise> or contact our technical team.

Terms and conditions

- Guarantee only valid for products bought direct from Abcam or one of our authorized distributors