

Anti-groEL antibody [9A1/2] ab82592

[18 References](#) [画像数 1](#)

製品の概要

製品名	Anti-groEL antibody [9A1/2]
製品の詳細	Mouse monoclonal [9A1/2] to groEL
由来種	Mouse
アプリケーション	適用あり: WB, IP
種交差性	交差種: Escherichia coli
免疫原	Full length protein corresponding to Escherichia coli groEL. Strain K12 Database link: P0A6F5
ポジティブ・コントロール	E. coli lysate.
特記事項	<p>This product was changed from ascites to tissue culture supernatant on 22nd May 2019. Please note that the dilutions may need to be adjusted accordingly. If you have any questions, please do not hesitate to contact our scientific support team.</p> <p>The Life Science industry has been in the grips of a reproducibility crisis for a number of years. Abcam is leading the way in addressing this with our range of recombinant monoclonal antibodies and knockout edited cell lines for gold-standard validation. Please check that this product meets your needs before purchasing.</p> <p>If you have any questions, special requirements or concerns, please send us an inquiry and/or contact our Support team ahead of purchase. Recommended alternatives for this product can be found below, along with publications, customer reviews and Q&As</p>

製品の特性

製品の状態	Liquid
保存方法	Shipped at 4°C. Upon delivery aliquot and store at -20°C. Avoid freeze / thaw cycles.
バッファー	Preservative: 0.09% Sodium azide Constituents: PBS, 50% Glycerol (glycerin, glycerine)
精製度	Tissue culture supernatant
特記事項(精製)	Purified from TCS.
ポリ/モノ	モノクローナル
クローン名	9A1/2
アイソタイプ	IgG1

アプリケーション

The Abpromise guarantee Abpromise保証は、次のテスト済みアプリケーションにおけるab82592の使用に適用されます
アプリケーションノートには、推奨の開始希釈率がありますが、適切な希釈率につきましてはご検討ください。

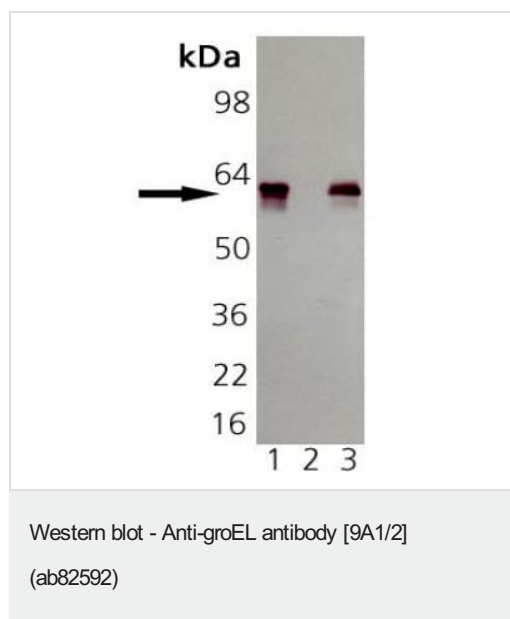
アプリケーション	Abreviews	特記事項
WB		Use at an assay dependent concentration. Detects a band of approximately 57 kDa (predicted molecular weight: 57 kDa).
IP		Use at an assay dependent concentration.

ターゲット情報

関連性 The bacterial chaperonin groEL is a double toroidal assembly, which together with the action of the ring-shaped oligomeric cochaperonin, GroES, facilitates protein folding in an ATP dependent manner.

細胞内局在 Cytoplasmic

画像



All lanes : Anti-groEL antibody [9A1/2] (ab82592) at 1/1000 dilution

Lane 1 : groEL recombinant E. coli protein

Lane 2 : Hsp60 recombinant human protein (negative control)

Lane 3 : E. coli lysate

Developed using the ECL technique.

Predicted band size: 57 kDa

Observed band size: 57 kDa

This image was generated using the ascites version of the product.

Please note: All products are "FOR RESEARCH USE ONLY. NOT FOR USE IN DIAGNOSTIC PROCEDURES"

Our Abpromise to you: Quality guaranteed and expert technical support

- Replacement or refund for products not performing as stated on the datasheet

- Valid for 12 months from date of delivery
- Response to your inquiry within 24 hours

- We provide support in Chinese, English, French, German, Japanese and Spanish
- Extensive multi-media technical resources to help you
- We investigate all quality concerns to ensure our products perform to the highest standards

If the product does not perform as described on this datasheet, we will offer a refund or replacement. For full details of the Abpromise, please visit <https://www.abcam.co.jp/abpromise> or contact our technical team.

Terms and conditions

- Guarantee only valid for products bought direct from Abcam or one of our authorized distributors