


### Anti-GRK2 (phospho S29) antibody ab58520

★★★★★ [2 Abreviews](#) [1 References](#) [画像数 2](#)

#### 製品の概要

製品名	Anti-GRK2 (phospho S29) antibody
製品の詳細	Rabbit polyclonal to GRK2 (phospho S29)
由来種	Rabbit
アプリケーション	<b>適用あり:</b> IHC-P, WB
種交差性	<b>交差種:</b> Human <b>交差が予測される動物種:</b> Rat 
免疫原	Synthetic peptide corresponding to Human GRK2 aa 1-100 (phospho S29). Database link: <a href="#">P25098</a>
特記事項	<p>The Life Science industry has been in the grips of a reproducibility crisis for a number of years. Abcam is leading the way in addressing this with our range of recombinant monoclonal antibodies and knockout edited cell lines for gold-standard validation. Please check that this product meets your needs before purchasing.</p> <p>If you have any questions, special requirements or concerns, please send us an inquiry and/or contact our Support team ahead of purchase. Recommended alternatives for this product can be found below, along with publications, customer reviews and Q&amp;As</p>

#### 製品の特性

製品の状態	Liquid
保存方法	Shipped at 4°C. Upon delivery aliquot and store at -20°C. Avoid freeze / thaw cycles.
バッファー	pH: 7.40 Preservative: 0.02% Sodium azide Constituents: PBS, 50% Glycerol (glycerin, glycerine), 0.87% Sodium chloride
精製度	Immunogen affinity purified
特記事項 (精製)	The antibody was affinity purified from rabbit antiserum by affinity chromatography using epitope specific phosphopeptide. The antibody against non phosphopeptide was removed by chromatography using non phosphopeptide corresponding to the phosphorylation site.
ポリ/モノ	ポリクローナル
アイソタイプ	IgG

## アプリケーション

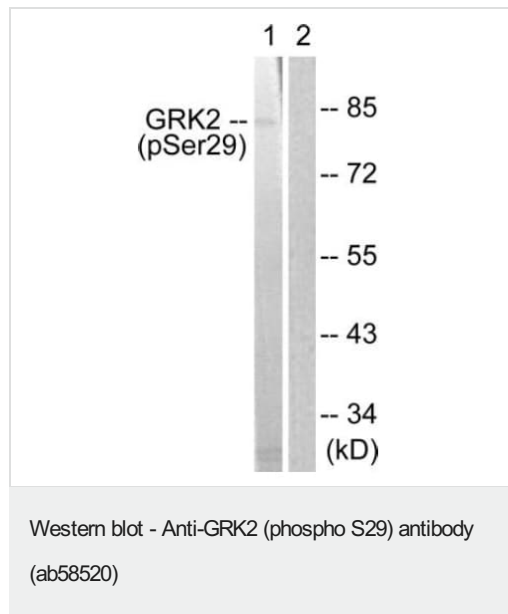
**The Abpromise guarantee** Abpromise保証は、 次のテスト済みアプリケーションにおけるab58520の使用に適用されます  
アプリケーションノートには、推奨の開始希釈率がありますが、適切な希釈率につきましてはご検討ください。

アプリケーション	Abreviews	特記事項
IHC-P		Use at an assay dependent concentration.
WB	★★★★★ (1)	1/500 - 1/1000. Predicted molecular weight: 80 kDa.

## ターゲット情報

機能	Specifically phosphorylates the agonist-occupied form of the beta-adrenergic and closely related receptors, probably inducing a desensitization of them. Key regulator of LPAR1 signaling. Competes with RALA for binding to LPAR1 thus affecting the signaling properties of the receptor. Desensitizes LPAR1 and LPAR2 in a phosphorylation-independent manner.
組織特異性	Expressed in peripheral blood leukocytes.
配列類似性	Belongs to the protein kinase superfamily. AGC Ser/Thr protein kinase family. GPRK subfamily. Contains 1 AGC-kinase C-terminal domain. Contains 1 PH domain. Contains 1 protein kinase domain. Contains 1 RGS domain.

## 画像

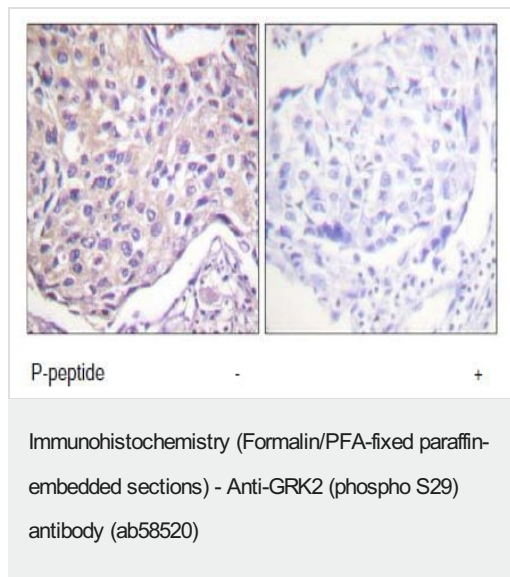


**All lanes :** Anti-GRK2 (phospho S29) antibody (ab58520)

**Lane 1 :** Jurkat cells treated with EGF

**Lane 2 :** Jurkat cells treated with EGF with phospho peptide

**Predicted band size:** 80 kDa



This image shows human breast carcinoma tissue stained with ab58520 at a 1/50 dilution. Right hand image: tissue treated with the immunising phosphopeptide. Left hand image; without the immunising phosphopeptide.

**Please note:** All products are "FOR RESEARCH USE ONLY. NOT FOR USE IN DIAGNOSTIC PROCEDURES"

### Our Abpromise to you: Quality guaranteed and expert technical support

- Replacement or refund for products not performing as stated on the datasheet
- Valid for 12 months from date of delivery
- Response to your inquiry within 24 hours
- We provide support in Chinese, English, French, German, Japanese and Spanish
- Extensive multi-media technical resources to help you
- We investigate all quality concerns to ensure our products perform to the highest standards

If the product does not perform as described on this datasheet, we will offer a refund or replacement. For full details of the Abpromise, please visit <https://www.abcam.co.jp/abpromise> or contact our technical team.

### Terms and conditions

- Guarantee only valid for products bought direct from Abcam or one of our authorized distributors