

### Anti-GRK1 antibody [D11] ab2776

[5 References](#) [画像数 4](#)

#### 製品の概要

---

製品名	Anti-GRK1 antibody [D11]
製品の詳細	Mouse monoclonal [D11] to GRK1
由来種	Mouse
特異性	Detects G-protein-associated rhodopsin kinase 1a/b (GRK1a/b) from human and bovine tissues. This antibody does not cross-react with other G protein-coupled kinases.
アプリケーション	<b>適用あり:</b> ICC/IF
種交差性	<b>交差種:</b> Mouse, Cow, Human
免疫原	Full length native protein (purified) corresponding to Human GRK1.
エピトープ	This antibody recognizes an N-terminal epitope of human GRK1 which is conserved in both GRK1a and GRK1b.
特記事項	<p>The Life Science industry has been in the grips of a reproducibility crisis for a number of years. Abcam is leading the way in addressing this with our range of recombinant monoclonal antibodies and knockout edited cell lines for gold-standard validation. Please check that this product meets your needs before purchasing.</p> <p>If you have any questions, special requirements or concerns, please send us an inquiry and/or contact our Support team ahead of purchase. Recommended alternatives for this product can be found below, along with publications, customer reviews and Q&amp;As</p>

#### 製品の特性

---

製品の状態	Liquid
保存方法	Shipped at 4°C. Store at +4°C short term (1-2 weeks). Upon delivery aliquot. Store at -20°C or -80°C. Avoid freeze / thaw cycle.
バッファー	Preservative: 0.05% Sodium azide
精製度	Protein G purified
一次抗体 備考	The sensation of sight is the result of a cascade of events starting with the interaction of photoactivated rhodopsin with a protein called transducin. Rhodopsin kinase is a G-protein-coupled Ser/Thr kinase, also known as GRK1, which is a key element in the regulation of this cascade. Following phosphorylation by GRK1, arrestin is recruited to phospho-rhodopsin quenching its phototransductive activity by preventing further interaction with transducin. By breaking the cycle of phototransduction, GRK1 plays an important role in the restoration of the

system for subsequent visual events.

ポリ/モノ	モノクローナル
クローン名	D11
アイソタイプ	IgG

#### アプリケーション

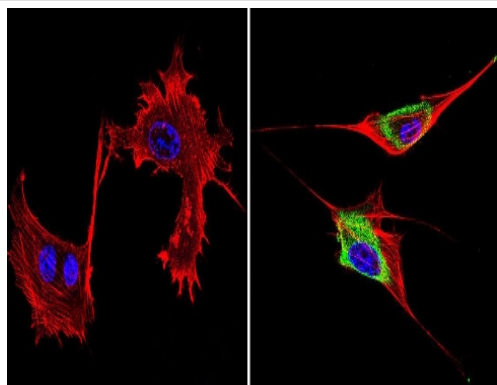
**The Abpromise guarantee** **Abpromise保証は、次のテスト済みアプリケーションにおけるab2776の使用に適用されず**  
アプリケーションノートには、推奨の開始希釈率がありますが、適切な希釈率につきましてはご検討ください。

アプリケーション	Abreviews	特記事項
ICC/IF		1/20 - 1/200.

#### ターゲット情報

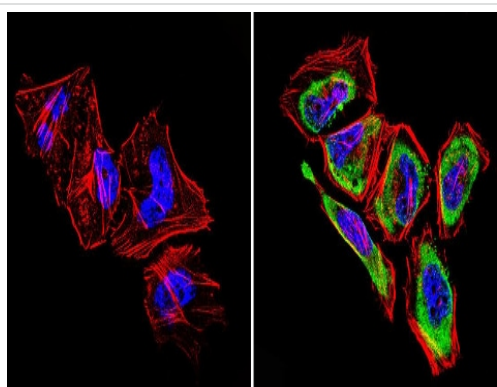
機能	Retina-specific kinase involved in the signal turnoff via phosphorylation of rhodopsin (RHO), the G protein- coupled receptor that initiates the phototransduction cascade. This rapid desensitization is essential for scotopic vision and permits rapid adaptation to changes in illumination.
組織特異性	Retinal-specific. Expressed in rods and cones cells.
関連疾患	Night blindness, congenital stationary, Oguchi type 2
配列類似性	Belongs to the protein kinase superfamily. AGC Ser/Thr protein kinase family. GPRK subfamily. Contains 1 AGC-kinase C-terminal domain. Contains 1 protein kinase domain. Contains 1 RGS domain.
翻訳後修飾	Autophosphorylated, Ser-21 is a minor site of autophosphorylation compared to Ser-491 and Thr-492 (By similarity). Phosphorylation at Ser-21 is regulated by light and activated by cAMP. Farnesylation is required for full activity.
細胞内局在	Membrane.

#### 画像



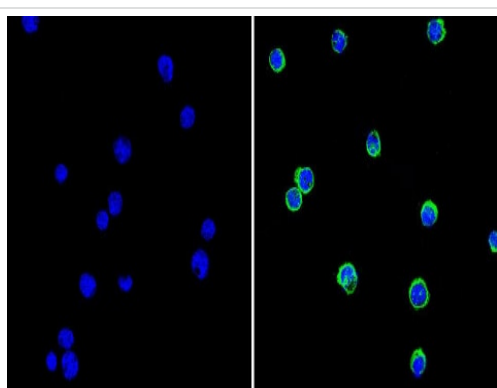
Immunocytochemistry/ Immunofluorescence - Anti-GRK1 antibody [D11] (ab2776)

Immunocytochemistry/Immunofluorescence analysis of GRK1 (green) in murine cells. Formalin-fixed cells were permeabilized with 0.1% Triton X-100 in TBS for 5-10 minutes at room temperature and blocked with 3% BSA-PBS for 30 minutes at room temperature. Cells were incubated with ab2776 (1:200) overnight in a humidified chamber. Cells were washed with PBST and incubated with a DyLight-conjugated secondary antibody for 45 minutes at room temperature in the dark. F-actin (red) was stained with a fluorescent phalloidin and nuclei (blue) were stained with DAPI. Images were taken at a 60X magnification.



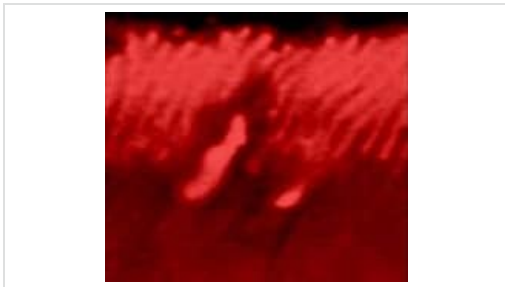
Immunocytochemistry/ Immunofluorescence - Anti-GRK1 antibody [D11] (ab2776)

Immunocytochemistry/Immunofluorescence analysis of GRK1 (green) in HeLa cells. Formalin-fixed cells were permeabilized with 0.1% Triton X-100 in TBS for 5-10 minutes at room temperature and blocked with 3% BSA-PBS for 30 minutes at room temperature. Cells were incubated with ab2776 (1:200) overnight in a humidified chamber. Cells were washed with PBST and incubated with a DyLight-conjugated secondary antibody for 45 minutes at room temperature in the dark. F-actin (red) was stained with a fluorescent phalloidin and nuclei (blue) were stained with DAPI. Images were taken at a 60X magnification.



Immunocytochemistry/ Immunofluorescence - Anti-GRK1 antibody [D11] (ab2776)

Immunocytochemistry/Immunofluorescence analysis of GRK1 (green) in human cells. Formalin-fixed cells were permeabilized with 0.1% Triton X-100 in TBS for 5-10 minutes at room temperature and blocked with 3% BSA-PBS for 30 minutes at room temperature. Cells were incubated with ab2776 (1:20) overnight in a humidified chamber. Cells were washed with PBST and incubated with a DyLight-conjugated secondary antibody for 45 minutes at room temperature in the dark. F-actin (red) was stained with a fluorescent phalloidin and nuclei (blue) were stained with DAPI. Images were taken at a 60X magnification.



Immunolocalization of GRK1 in bovine retina using ab2776.

Immunocytochemistry/ Immunofluorescence - Anti-GRK1 antibody [D11] (ab2776)

**Please note:** All products are "FOR RESEARCH USE ONLY. NOT FOR USE IN DIAGNOSTIC PROCEDURES"

### Our Abpromise to you: Quality guaranteed and expert technical support

---

- Replacement or refund for products not performing as stated on the datasheet
- Valid for 12 months from date of delivery
- Response to your inquiry within 24 hours
- We provide support in Chinese, English, French, German, Japanese and Spanish
- Extensive multi-media technical resources to help you
- We investigate all quality concerns to ensure our products perform to the highest standards

If the product does not perform as described on this datasheet, we will offer a refund or replacement. For full details of the Abpromise, please visit <https://www.abcam.co.jp/abpromise> or contact our technical team.

### Terms and conditions

---

- Guarantee only valid for products bought direct from Abcam or one of our authorized distributors