

Anti-GRB2 antibody [Y237] - BSA and Azide free ab227117

リコンビナント **RabMAb**

3 References **画像数 6**

製品の概要

製品名	Anti-GRB2 antibody [Y237] - BSA and Azide free
製品の詳細	Rabbit monoclonal [Y237] to GRB2 - BSA and Azide free
由来種	Rabbit
アプリケーション	適用あり: IP, Flow Cyt (Intra), WB, ICC/IF, IHC-P
種交差性	交差種: Mouse, Rat, Human
免疫原	Synthetic peptide. This information is proprietary to Abcam and/or its suppliers.
ポジティブ・コントロール	WB: HeLa, HL-60, Caco-2, HEK293, PC-12 and NIH/3T3 cell lysates. IHC-P: Human ovarian carcinoma tissue. ICC/IF: HeLa cells. Flow Cyt (intra): HeLa cells.
特記事項	<p>ab227117 is the carrier-free version of ab32037.</p> <p>Our carrier-free antibodies are typically supplied in a PBS-only formulation, purified and free of BSA, sodium azide and glycerol. The carrier-free buffer and high concentration allow for increased conjugation efficiency.</p> <p>This conjugation-ready format is designed for use with fluorochromes, metal isotopes, oligonucleotides, and enzymes, which makes them ideal for antibody labelling, functional and cell-based assays, flow-based assays (e.g. mass cytometry) and Multiplex Imaging applications.</p> <p>Use our conjugation kits for antibody conjugates that are ready-to-use in as little as 20 minutes with <1 minute hands-on-time and 100% antibody recovery: available for fluorescent dyes, HRP, biotin and gold.</p> <p>This product is compatible with the Maxpar[®] Antibody Labeling Kit from Fluidigm, without the need for antibody preparation. Maxpar[®] is a trademark of Fluidigm Canada Inc.</p>

製品の特性

製品の状態	Liquid
保存方法	Shipped at 4°C. Store at +4°C. Do Not Freeze.
バッファー	pH: 7.20 Constituent: PBS
キャリア・フリー	はい

精製度	Protein A purified
ポリ/モノ	モノクローナル
クローン名	Y237
アイソタイプ	IgG

アプリケーション

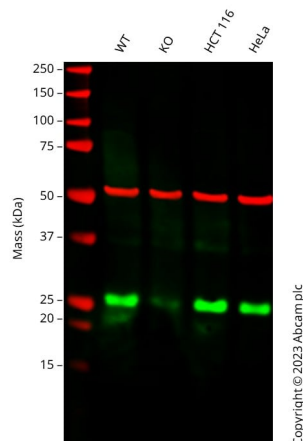
The Abpromise guarantee **Abpromise保証は、次のテスト済みアプリケーションにおけるab227117の使用に適用されます**
 アプリケーションノートには、推奨の開始希釈率がありますが、適切な希釈率につきましてはご確認ください。

アプリケーション	Abreviews	特記事項
IP		Use at an assay dependent concentration.
Flow Cyt (Intra)		Use at an assay dependent concentration. ab199376 - Rabbit monoclonal IgG (Low endotoxin, Azide free), is suitable for use as an isotype control with this antibody.
WB		Use at an assay dependent concentration. Detects a band of approximately 25 kDa (predicted molecular weight: 25 kDa).
ICC/IF		Use at an assay dependent concentration.
IHC-P		Use at an assay dependent concentration. Perform heat mediated antigen retrieval with citrate buffer pH 6 before commencing with IHC staining protocol.

ターゲット情報

機能	<p>Adapter protein that provides a critical link between cell surface growth factor receptors and the Ras signaling pathway.</p> <p>Isoform GRB3-3 does not bind to phosphorylated epidermal growth factor receptor (EGFR) but inhibits EGF-induced transactivation of a RAS-responsive element. Isoform GRB3-3 acts as a dominant negative protein over GRB2 and by suppressing proliferative signals, may trigger active programmed cell death.</p>
配列類似性	<p>Belongs to the GRB2/sem-5/DRK family.</p> <p>Contains 1 SH2 domain.</p> <p>Contains 2 SH3 domains.</p>
ドメイン	The SH3 domains mediate interaction with RALGPS1 and SHB.
細胞内局在	Golgi apparatus.

画像



Western blot - Anti-GRB2 antibody [Y237] - BSA and Azide free (ab227117)

All lanes : Anti-GRB2 antibody [Y237] ([ab32037](#)) at 1/5000 dilution

Lane 1 : Wild-type A431 cell lysate

Lane 2 : GRB2 knockout A431 cell lysate

Lane 3 : HCT 116 cell lysate

Lane 4 : HeLa cell lysate

Lysates/proteins at 20 µg per lane.

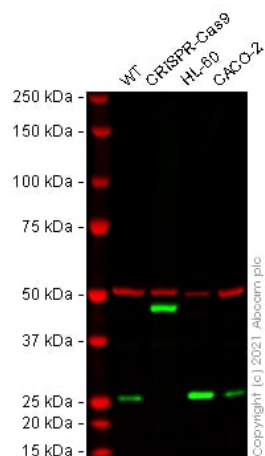
Performed under reducing conditions.

Predicted band size: 25 kDa

Observed band size: 26 kDa

This data was developed using the same antibody clone in a different buffer formulation ([ab32037](#)).

Anti-GRB2 antibody [Y237] ([ab32037](#)) staining at 1/5000 dilution, shown in green; Mouse anti-Alpha Tubulin [DM1A] ([ab7291](#)) loading control staining at 1/20000 dilution, shown in red. In Western blot, [ab32037](#) was shown to bind specifically to GRB2. A band was observed at 26 kDa in wild-type A431 cell lysates with a reduction in signal observed at this size in GRB2 heterozygous knockout cell line. To generate this image, wild-type and GRB2 heterozygous knockout A431 cell lysates were analysed. First, samples were run on an SDS-PAGE gel then transferred onto a nitrocellulose membrane. Membranes were blocked in 3 % milk in TBS-0.1 % Tween® 20 (TBS-T) before incubation with primary antibodies overnight at 4 °C. Blots were washed four times in TBS-T, incubated with secondary antibodies for 1 h at room temperature, washed again four times then imaged. Secondary antibodies used were Goat anti-Rabbit IgG H&L 800CW and Goat anti-Mouse IgG H&L 680RD at 1/20000 dilution.



Western blot - Anti-GRB2 antibody [Y237] - BSA and Azide free (ab227117)

All lanes : Anti-GRB2 antibody [Y237] ([ab32037](#)) at 1/5000 dilution

Lane 1 : Wild-type HeLa (Human epithelial cell line from cervix adenocarcinoma) whole cell lysate

Lane 2 : GRB2 knockout HeLa (Human epithelial cell line from cervix adenocarcinoma) whole cell lysate

Lane 3 : HL-60 (Human promyelocytic leukemia cell line) whole cell lysate

Lane 4 : Caco-2 (Human colorectal adenocarcinoma cell line) whole cell lysate

Lysates/proteins at 20 µg per lane.

Performed under reducing conditions.

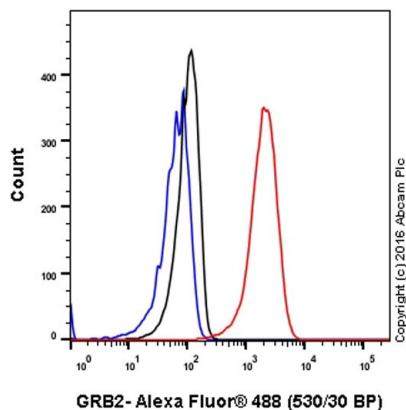
Predicted band size: 25 kDa

Observed band size: 25 kDa

This data was developed using the same antibody clone in a different buffer formulation ([ab32037](#)).

Lanes 1 - 4: Merged signal (red and green). Green - [ab32037](#) observed at 25 kDa. Red - loading control, [ab7291](#) (Mouse anti-Alpha Tubulin [DM1A]) observed at 55 kDa.

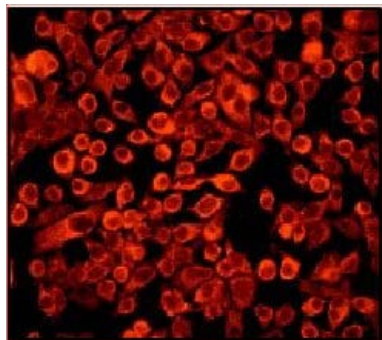
[ab32037](#) was shown to react with GRB2 in western blot. The band observed in the CRISPR-Cas9 edited cell lysate lane above 25 kDa is likely to represent an insertion. This has not been investigated further and the functional properties of the gene product have not been determined. Cell lysates were subjected to SDS-PAGE. Membranes were blocked in 3 % milk in TBS-T (0.1 % Tween®) before incubation with [ab32037](#) and [ab7291](#) (Mouse anti-Alpha Tubulin [DM1A]) overnight at 4 °C at a 1 in 5000 dilution and a 1 in 20000 dilution respectively. Blots were incubated with Goat anti-Rabbit IgG H&L (IRDye® 800CW) preabsorbed ([ab216773](#)) and Goat anti-Mouse IgG H&L (IRDye® 680RD) preabsorbed ([ab216776](#)) secondary antibodies at 1 in 20000 dilution for 1 h at room temperature before imaging.



Flow Cytometry (Intracellular) - Anti-GRB2 antibody
[Y237] - BSA and Azide free (ab227117)

Intracellular Flow Cytometry analysis of HeLa (Human cervix adenocarcinoma epithelial cell) cells labeling GRB2 (red) with **ab32037** at a 1/20 dilution. Cells were fixed with 4% paraformaldehyde and permeabilized with 90% methanol. A goat anti-rabbit IgG (Alexa Fluor® 488) (**ab150077**) was used as the secondary antibody at a 1/2000 dilution. Black - Rabbit monoclonal IgG (Black) (**ab172730**). Blue (unlabeled control) - Cell without incubation with primary antibody and secondary antibody (Blue).

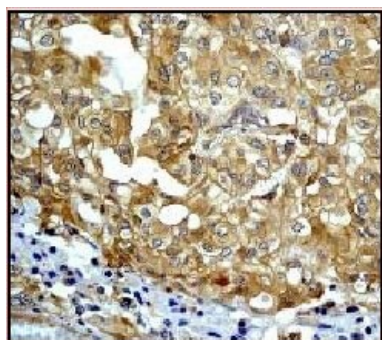
This data was developed using the same antibody clone in a different buffer formulation containing PBS, BSA, glycerol, and sodium azide (**ab32037**).



Immunocytochemistry/ Immunofluorescence - Anti-GRB2 antibody [Y237] - BSA and Azide free (ab227117)

Immunofluorescent analysis of GRB2 expression in HeLa cells using 1/50 **ab32037**.

This data was developed using the same antibody clone in a different buffer formulation containing PBS, BSA, glycerol, and sodium azide (**ab32037**).



Immunohistochemistry (Formalin/PFA-fixed paraffin-embedded sections) - Anti-GRB2 antibody [Y237] - BSA and Azide free (ab227117)

This IHC data was generated using the same anti-GRB2 antibody clone, Y237, in a different buffer formulation (cat# **ab32037**).

Immunohistochemical analysis of GRB2 expression in paraffin embedded human ovarian carcinoma, using 1/100 **ab32037**.

Perform heat mediated antigen retrieval with citrate buffer pH 6 before commencing with IHC staining protocol.

Why choose a recombinant antibody?



Research with confidence
Consistent and reproducible results



Long-term and scalable supply
Recombinant technology



Success from the first experiment
Confirmed specificity



Ethical standards compliant
Animal-free production

Anti-GRB2 antibody [Y237] - BSA and Azide free
(ab227117)

Please note: All products are "FOR RESEARCH USE ONLY. NOT FOR USE IN DIAGNOSTIC PROCEDURES"

Our Abpromise to you: Quality guaranteed and expert technical support

- Replacement or refund for products not performing as stated on the datasheet
- Valid for 12 months from date of delivery
- Response to your inquiry within 24 hours
- We provide support in Chinese, English, French, German, Japanese and Spanish
- Extensive multi-media technical resources to help you
- We investigate all quality concerns to ensure our products perform to the highest standards

If the product does not perform as described on this datasheet, we will offer a refund or replacement. For full details of the Abpromise, please visit <https://www.abcam.co.jp/abpromise> or contact our technical team.

Terms and conditions

- Guarantee only valid for products bought direct from Abcam or one of our authorized distributors