


Anti-Granzyme B antibody ab4059

★★★★☆ [21 Abreviews](#) [146 References](#) [画像数 2](#)

製品の概要

製品名	Anti-Granzyme B antibody
製品の詳細	Rabbit polyclonal to Granzyme B
由来種	Rabbit
特異性	The immunogen used for this product shares 94% homology with Granzyme H. Cross-reactivity with this protein has not been confirmed experimentally.
アプリケーション	適用あり: IHC-P
種交差性	交差種: Human 交差が予測される動物種: Mouse, Rat, Pig, Common marmoset 
免疫原	Synthetic peptide. This information is proprietary to Abcam and/or its suppliers.
特記事項	This product is FOR RESEARCH USE ONLY. For commercial use, please contact partnerships@abcam.com. The Life Science industry has been in the grips of a reproducibility crisis for a number of years. Abcam is leading the way in addressing this with our range of recombinant monoclonal antibodies and knockout edited cell lines for gold-standard validation. Please check that this product meets your needs before purchasing. If you have any questions, special requirements or concerns, please send us an inquiry and/or contact our Support team ahead of purchase. Recommended alternatives for this product can be found below, along with publications, customer reviews and Q&As

製品の特性

製品の状態	Liquid
保存方法	Shipped at 4°C. Upon delivery aliquot and store at -20°C. Avoid freeze / thaw cycles.
バッファー	pH: 7.60 Preservative: 0.1% Sodium azide Constituents: PBS, 1% BSA
精製度	Immunogen affinity purified
ポリ/モノ	ポリクローナル
アイソタイプ	IgG

アプリケーション

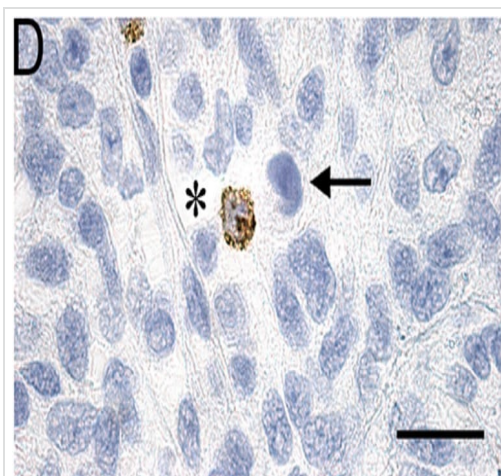
The Abpromise guarantee **Abpromise保証は、** 次のテスト済みアプリケーションにおけるab4059の使用に適用されます
アプリケーションノートには、推奨の開始希釈率がありますが、適切な希釈率につきましてはご検討ください。

アプリケーション	Abreviews	特記事項
IHC-P	★★★★☆ (20)	1/100. Perform heat mediated antigen retrieval before commencing with IHC staining protocol.

ターゲット情報

機能	This enzyme is necessary for target cell lysis in cell-mediated immune responses. It cleaves after Asp. Seems to be linked to an activation cascade of caspases (aspartate-specific cysteine proteases) responsible for apoptosis execution. Cleaves caspase-3, -7, -9 and 10 to give rise to active enzymes mediating apoptosis.
配列類似性	Belongs to the peptidase S1 family. Granzyme subfamily. Contains 1 peptidase S1 domain.
細胞内局在	Cytoplasmic granule. Cytoplasmic granules of cytolytic T-lymphocytes and natural killer cells.

画像

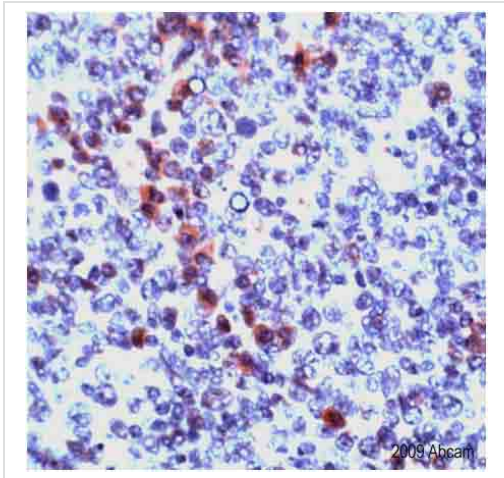


Cytotoxic effector cells and regulatory T cells in human glioblastoma xenograft growing in immunocompetent rats.

Granzyme B-positive cytotoxic cells (ab4059 at a 1/75 dilution) in a GBM xenograft with rejection. Asterisks mark tissue lysed by effector cells.

Immunohistochemistry (Formalin/PFA-fixed paraffin-embedded sections) - Anti-Granzyme B antibody (ab4059)

Huszthy et al PLoS One. 2015 Aug 20;10(8):e0136089. doi: 10.1371/journal.pone.0136089. eCollection 2015. Fig 5. Reproduced under the Creative Commons license <http://creativecommons.org/licenses/by/4.0/>



Human tonsil tissue stained with anti-Granzyme B antibody (ab4059).

Immunohistochemistry (Formalin/PFA-fixed paraffin-embedded sections) - Anti-Granzyme B antibody (ab4059)

Please note: All products are "FOR RESEARCH USE ONLY. NOT FOR USE IN DIAGNOSTIC PROCEDURES"

Our Abpromise to you: Quality guaranteed and expert technical support

- Replacement or refund for products not performing as stated on the datasheet
- Valid for 12 months from date of delivery
- Response to your inquiry within 24 hours
- We provide support in Chinese, English, French, German, Japanese and Spanish
- Extensive multi-media technical resources to help you
- We investigate all quality concerns to ensure our products perform to the highest standards

If the product does not perform as described on this datasheet, we will offer a refund or replacement. For full details of the Abpromise, please visit <https://www.abcam.co.jp/abpromise> or contact our technical team.

Terms and conditions

- Guarantee only valid for products bought direct from Abcam or one of our authorized distributors