

Anti-GPCR LGR6 antibody [EPR6874] ab126747

リコンビナント RabMAb[®]

★★★★☆ **1 Abreviews** **15 References** 画像数 8

製品の概要

製品名	Anti-GPCR LGR6 antibody [EPR6874]
製品の詳細	Rabbit monoclonal [EPR6874] to GPCR LGR6
由来種	Rabbit
アプリケーション	適用あり: Flow Cyt (Intra), ICC/IF, WB, IHC-P
種交差性	交差種: Mouse, Rat, Human
免疫原	Synthetic peptide. This information is proprietary to Abcam and/or its suppliers.
ポジティブ・コントロール	IHC-P: Rat and mouse liver tissues. Human lung tissue; WB: HEK-293, HeLa, HUVEC, and SK-OV-3 cell lysates. Mouse, rat, and human liver tissue lysates. Mouse and rat lung tissue lysates; ICC/IF and Flow Cyt (intra): HeLa cells.
特記事項	<p>This product is a recombinant monoclonal antibody, which offers several advantages including:</p> <ul style="list-style-type: none">- High batch-to-batch consistency and reproducibility- Improved sensitivity and specificity- Long-term security of supply- Animal-free production <p>For more information see here.</p> <p>Our RabMAb[®] technology is a patented hybridoma-based technology for making rabbit monoclonal antibodies. For details on our patents, please refer to RabMAb[®] patents.</p>

製品の特性

製品の状態	Liquid
保存方法	Shipped at 4°C. Store at +4°C short term (1-2 weeks). Upon delivery aliquot. Store at -20°C long term. Avoid freeze / thaw cycle.
バッファー	pH: 7.20 Preservative: 0.01% Sodium azide Constituents: 59% PBS, 40% Glycerol (glycerin, glycerine), 0.05% BSA
精製度	Protein A purified
ポリ/モノ	モノクローナル
クローン名	EPR6874

アプリケーション

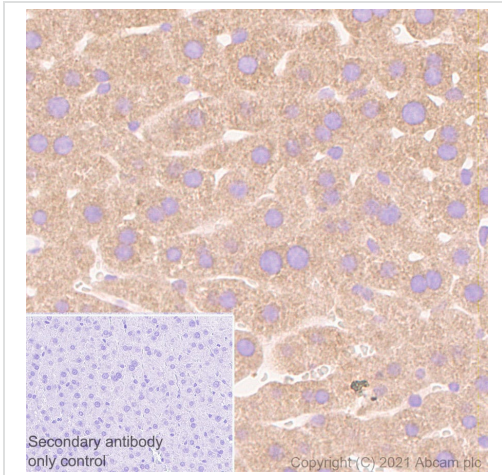
The Abpromise guarantee **Abpromise保証は、次のテスト済みアプリケーションにおけるab126747の使用に適用されず**
アプリケーションノートには、推奨の開始希釈率がありますが、適切な希釈率につきましてはご検討ください。

アプリケーション	Abreviews	特記事項
Flow Cyt (Intra)		1/10 - 1/100. ab172730 - Rabbit monoclonal IgG, is suitable for use as an isotype control with this antibody.
ICC/IF	★★★★★ (1)	1/50. For unpurified use at 1/100 - 1/500.
WB		1/1000. Predicted molecular weight: 104 kDa. For unpurified use at 1/1000 - 1/10000.
IHC-P		1/240. Perform heat mediated antigen retrieval with citrate buffer pH 6 before commencing with IHC staining protocol. See IHC antigen retrieval protocols . For unpurified use at 1/50 - 1/250.

ターゲット情報

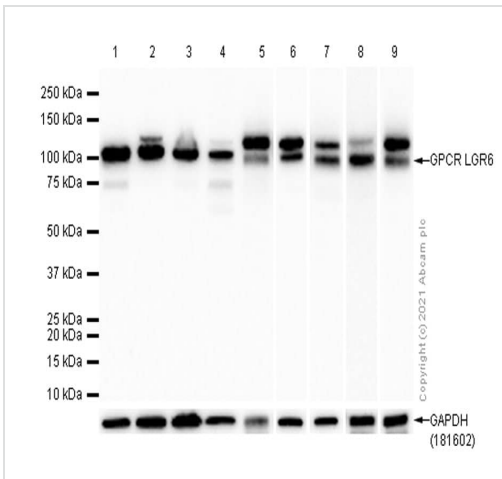
機能	Orphan receptor.
配列類似性	Belongs to the G-protein coupled receptor 1 family. Contains 15 LRR (leucine-rich) repeats. Contains 1 LRRNT domain.
翻訳後修飾	Phosphorylated upon DNA damage, probably by ATM or ATR.
細胞内局在	Cell membrane.

画像



Immunohistochemistry (Formalin/PFA-fixed paraffin-embedded sections) - Anti-GPCR LGR6 antibody [EPR6874] (ab126747)

Immunohistochemistry (Formalin/PFA-fixed paraffin-embedded sections) analysis of Rat liver tissue sections labeling GPCR LGR6 with purified ab126747 at 1/240 dilution (0.61 µg/mL). Heat mediated antigen retrieval using Bond™ Epitope Retrieval Solution 1 (pH 6.0). The immunostaining was performed on a Leica Biosystems BOND® RX instrument. Rabbit specific IHC polymer detection kit HRP/DAB (**ab209101**) was used as the secondary antibody. Negative control: PBS instead of the primary antibody. Hematoxylin was used as a counterstain.



Western blot - Anti-GPCR LGR6 antibody [EPR6874] (ab126747)

All lanes : Anti-GPCR LGR6 antibody [EPR6874] (ab126747) at 1/1000 dilution

Lane 1 : HEK-293 (Human embryonic kidney epithelial cell) whole cell lysate

Lane 2 : HeLa (Human cervix adenocarcinoma epithelial cell) whole cell lysate

Lane 3 : HUVEC (Human umbilical vein endothelial cell) whole cell lysate

Lane 4 : SK-OV-3 (Human ovarian cancer epithelial cell) whole cell lysate

Lane 5 : Mouse liver lysate

Lane 6 : Rat liver lysate

Lane 7 : Human liver lysate

Lane 8 : Mouse lung lysate

Lane 9 : Rat lung lysate

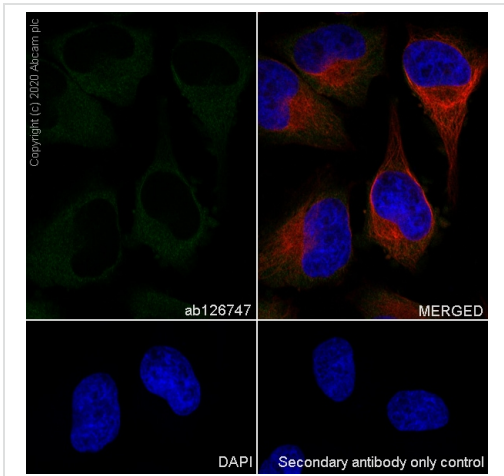
Lysates/proteins at 20 µg per lane.

Secondary

All lanes : Goat Anti-Rabbit IgG (HRP) with minimal cross-reactivity with human IgG at 1/2000 dilution

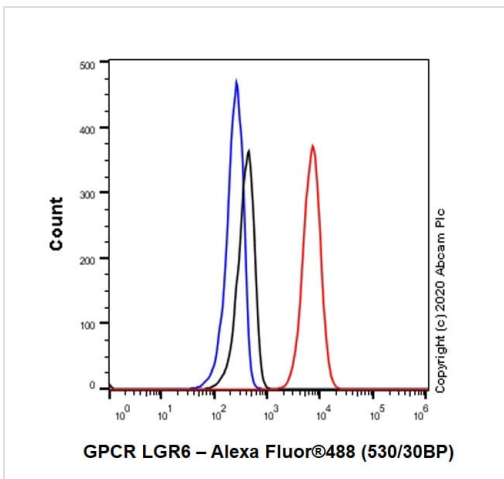
Predicted band size: 104 kDa

We are not sure about the extra band.



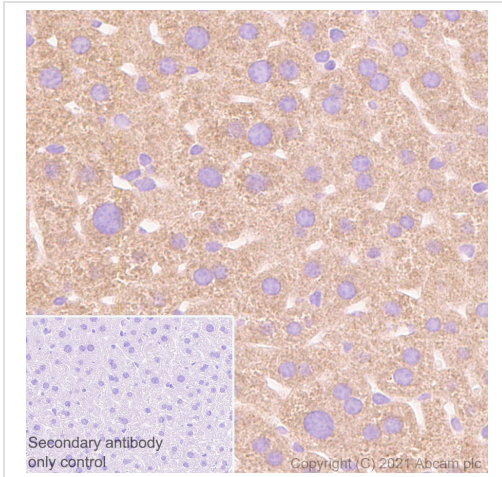
Immunocytochemistry/ Immunofluorescence - Anti-GPCR LGR6 antibody [EPR6874] (ab126747)

Immunocytochemistry analysis of HeLa (Human cervix adenocarcinoma epithelial cell) cells labeling GPCR LGR6 with Purified ab126747 at 1:50 dilution (3.0 µg/ml). Cells were fixed in 4% Paraformaldehyde and permeabilized with 0.1% tritonX-100. Cells were counterstained with Ab195889 Anti-alpha Tubulin antibody [DM1A] - Microtubule Marker (Alexa Fluor® 594) 1:200 (2.5 µg/ml). Goat anti rabbit IgG (Alexa Fluor® 488, **ab150077**) was used as the secondary antibody at 1:1000 (2 µg/ml) dilution. DAPI (blue) was used as nuclear counterstain. PBS instead of the primary antibody was used as the secondary antibody only control.



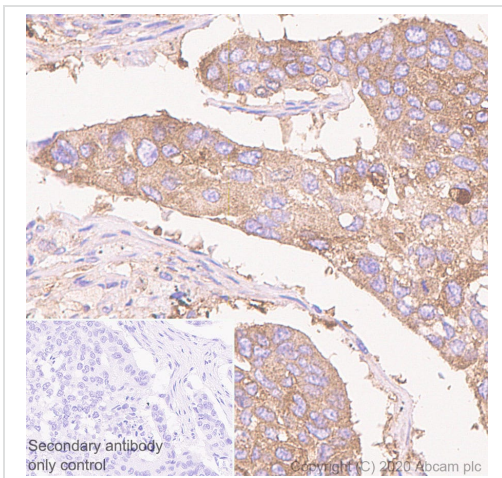
Flow Cytometry (Intracellular) - Anti-GPCR LGR6 antibody [EPR6874] (ab126747)

Intracellular Flow Cytometry analysis of HeLa (Human cervix adenocarcinoma epithelial cell) cells labeling GPCR LGR6 with Purified ab126747 at 1/20 dilution (10 µg/ml) (Red). Cells were fixed with 4% Paraformaldehyde and permeabilised with 90% Methanol. A Goat anti rabbit IgG (Alexa Fluor® 488, **ab150077**) secondary antibody was used at 1/2000. Isotype control - Rabbit monoclonal IgG (Black). Unlabeled control - Cell without incubation with primary antibody and secondary antibody (Blue).



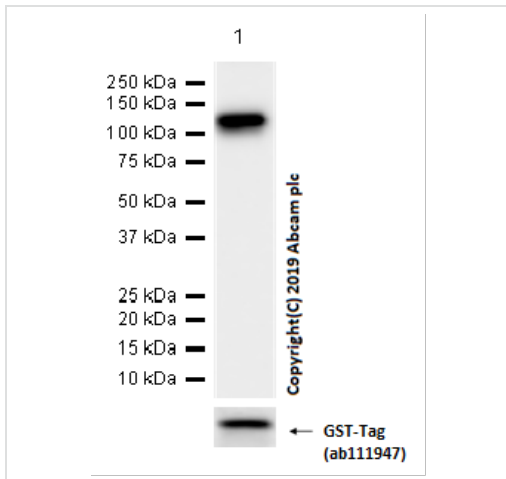
Immunohistochemistry (Formalin/PFA-fixed paraffin-embedded sections) - Anti-GPCR LGR6 antibody [EPR6874] (ab126747)

Immunohistochemistry (Formalin/PFA-fixed paraffin-embedded sections) analysis of Mouse liver tissue sections labeling GPCR LGR6 with purified ab126747 at 1/240 dilution (0.61 $\mu\text{g}/\text{mL}$). Heat mediated antigen retrieval using Bond™ Epitope Retrieval Solution 1 (pH 6.0). The immunostaining was performed on a Leica Biosystems BOND® RX instrument. Rabbit specific IHC polymer detection kit HRP/DAB (**ab209101**) was used as the secondary antibody. Negative control: PBS instead of the primary antibody. Hematoxylin was used as a counterstain.



Immunohistochemistry (Formalin/PFA-fixed paraffin-embedded sections) - Anti-GPCR LGR6 antibody [EPR6874] (ab126747)

Immunohistochemistry (Formalin/PFA-fixed paraffin-embedded sections) analysis of Human lung cancer tissue sections labeling GPCR LGR6 with purified ab126747 at 1/240 dilution (0.61 $\mu\text{g}/\text{mL}$). Heat mediated antigen retrieval using Bond™ Epitope Retrieval Solution 1 (pH 6.0). The immunostaining was performed on a Leica Biosystems BOND® RX instrument. Rabbit specific IHC polymer detection kit HRP/DAB (**ab209101**) was used as the secondary antibody. Negative control: PBS instead of the primary antibody. Hematoxylin was used as a counterstain.



Western blot - Anti-GPCR LGR6 antibody [EPR6874] (ab126747)

Anti-GPCR LGR6 antibody [EPR6874] (ab126747) at 1/1000 dilution + GST-Tagged Recombinant Human GPCR LGR6 protein at 0.015 µg

Secondary

Goat Anti-Rabbit IgG H&L (HRP) ([ab97051](#)) at 1/20000 dilution

Predicted band size: 104 kDa

Exposure time: 10 seconds

Recombinant Human GPCR LGR6 protein (Cat#: [ab153472](#))

Why choose a recombinant antibody?

<p>Research with confidence Consistent and reproducible results</p>	<p>Long-term and scalable supply Recombinant technology</p>
<p>Success from the first experiment Confirmed specificity</p>	<p>Ethical standards compliant Animal-free production</p>

Anti-GPCR LGR6 antibody [EPR6874] (ab126747)

Please note: All products are "FOR RESEARCH USE ONLY. NOT FOR USE IN DIAGNOSTIC PROCEDURES"

Our Abpromise to you: Quality guaranteed and expert technical support

- Replacement or refund for products not performing as stated on the datasheet
- Valid for 12 months from date of delivery
- Response to your inquiry within 24 hours

- We provide support in Chinese, English, French, German, Japanese and Spanish
- Extensive multi-media technical resources to help you
- We investigate all quality concerns to ensure our products perform to the highest standards

If the product does not perform as described on this datasheet, we will offer a refund or replacement. For full details of the Abpromise, please visit <https://www.abcam.co.jp/abpromise> or contact our technical team.

Terms and conditions

- Guarantee only valid for products bought direct from Abcam or one of our authorized distributors