


Anti-GOLPH3/MIDAS antibody ab113649

1 References [画像数 2](#)

製品の概要

製品名	Anti-GOLPH3/MIDAS antibody
製品の詳細	Rabbit polyclonal to GOLPH3/MIDAS
由来種	Rabbit
アプリケーション	適用あり: WB, IHC-P
種交差性	交差種: Rat, Human 交差が予測される動物種: Mouse 
免疫原	Synthetic peptide corresponding to Human GOLPH3/MIDAS (N terminal) conjugated to keyhole limpet haemocyanin.
特記事項	<p>The Life Science industry has been in the grips of a reproducibility crisis for a number of years. Abcam is leading the way in addressing this with our range of recombinant monoclonal antibodies and knockout edited cell lines for gold-standard validation. Please check that this product meets your needs before purchasing.</p> <p>If you have any questions, special requirements or concerns, please send us an inquiry and/or contact our Support team ahead of purchase. Recommended alternatives for this product can be found below, along with publications, customer reviews and Q&As</p>

製品の特性

製品の状態	Liquid
保存方法	Shipped at 4°C. Store at +4°C short term (1-2 weeks). Store at -20°C or -80°C. Avoid freeze / thaw cycle.
バッファー	pH: 7.4 Preservative: 0.02% Sodium azide Constituent: 99% PBS
精製度	Protein A purified
ポリ/モノ	ポリクローナル
アイソタイプ	IgG

アプリケーション

The Abpromise guarantee

Abpromise保証は、次のテスト済みアプリケーションにおけるab113649の使用に適用されます

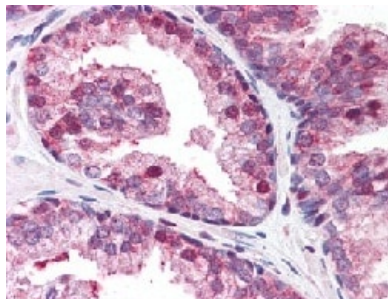
アプリケーションノートには、推奨の開始希釈率がありますが、適切な希釈率につきましてはご検討ください。

アプリケーション	Abreviews	特記事項
WB		Use a concentration of 0.5 - 1 µg/ml. Predicted molecular weight: 34 kDa.
IHC-P		Use a concentration of 5 µg/ml.

ターゲット情報

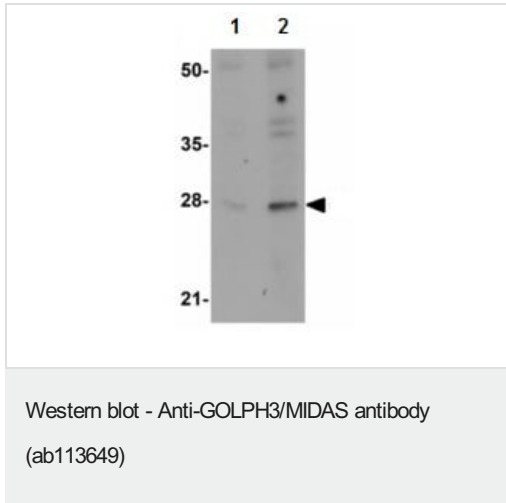
機能	Involved in modulation of mTOR signaling. Involved in the regulation of mitochondrial lipids, leading to increase of mitochondrial mass. Potential oncogene.
組織特異性	Detected in muscle fibers of patients with mitochondrial diseases; not detected in normal muscle fibers.
配列類似性	Belongs to the GOLPH3/VPS74 family.
翻訳後修飾	Phosphorylated.
細胞内局在	Cell membrane. Endosome. Cytoplasm. Golgi apparatus > Golgi stack membrane. Mitochondrion intermembrane space.

画像



ab113649, at 5 µg/ml, staining GOLPH3/MIDAS in Formalin fixed, Paraffin embedded Human prostate tissue by Immunohistochemistry.

Immunohistochemistry (Formalin/PFA-fixed paraffin-embedded sections) - Anti-GOLPH3/MIDAS antibody (ab113649)



Lane 1 : Anti-GOLPH3/MIDAS antibody (ab113649) at 0.5 µg/ml

Lane 2 : Anti-GOLPH3/MIDAS antibody (ab113649) at 1 µg/ml

All lanes : Rat lung tissue lysate

Predicted band size: 34 kDa

Please note: All products are "FOR RESEARCH USE ONLY. NOT FOR USE IN DIAGNOSTIC PROCEDURES"

Our Abpromise to you: Quality guaranteed and expert technical support

- Replacement or refund for products not performing as stated on the datasheet
- Valid for 12 months from date of delivery
- Response to your inquiry within 24 hours

- We provide support in Chinese, English, French, German, Japanese and Spanish
- Extensive multi-media technical resources to help you
- We investigate all quality concerns to ensure our products perform to the highest standards

If the product does not perform as described on this datasheet, we will offer a refund or replacement. For full details of the Abpromise, please visit <https://www.abcam.co.jp/abpromise> or contact our technical team.

Terms and conditions

- Guarantee only valid for products bought direct from Abcam or one of our authorized distributors