

# Anti-Golgi Complex antibody [SPM581] ab270733

画像数 1

### 製品の概要

製品名	Anti-Golgi Complex antibody [SPM581]
製品の詳細	Mouse monoclonal [SPM581] to Golgi Complex
由来種	Mouse
アプリケーション	<b>適用あり:</b> IHC-P
種交差性	<b>交差種:</b> Human
免疫原	Tissue, cells or virus corresponding to Human Golgi Complex. SU-DHL-1 large cell lymphoma cells.
ポジティブ・コントロール	IHC-P: Human gallbladder tissue.
特記事項	<p>The Life Science industry has been in the grips of a reproducibility crisis for a number of years. Abcam is leading the way in addressing this with our range of recombinant monoclonal antibodies and knockout edited cell lines for gold-standard validation. Please check that this product meets your needs before purchasing.</p> <p>If you have any questions, special requirements or concerns, please send us an inquiry and/or contact our Support team ahead of purchase. Recommended alternatives for this product can be found below, along with publications, customer reviews and Q&amp;As</p>

### 製品の特性

製品の状態	Liquid
保存方法	Shipped at 4°C. Store at +4°C short term (1-2 weeks). Upon delivery aliquot. Store at -20°C. Avoid freeze / thaw cycle.
バッファー	<p>pH: 7.2</p> <p>Preservative: 0.05% Sodium azide</p> <p>Constituents: PBS, 0.05% BSA</p>
精製度	Protein A/G purified
特記事項 (精製)	Purified from Bioreactor Concentrate.
ポリ/モノ	モノクローナル
クローン名	SPM581
アイソタイプ	IgG1
軽鎖の種類	kappa

## アプリケーション

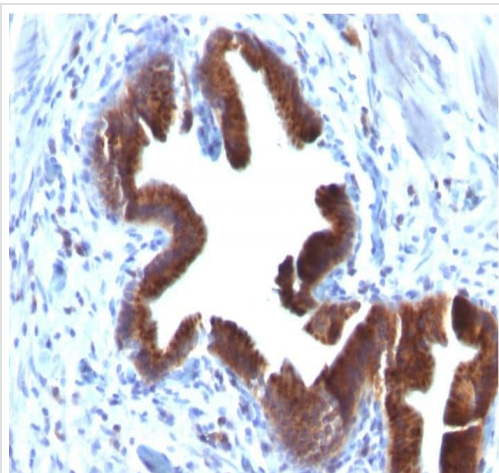
**The Abpromise guarantee** Abpromise保証は、次のテスト済みアプリケーションにおけるab270733の使用に適用されます  
アプリケーションノートには、推奨の開始希釈率がありますが、適切な希釈率につきましてはご検討ください。

アプリケーション	Abreviews	特記事項
IHC-P		Use a concentration of 1 - 2 µg/ml. Perform heat mediated antigen retrieval with Tris/EDTA buffer pH 9.0 before commencing with IHC staining protocol.

## ターゲット情報

機能	Binds fibroblast growth factor and E-selectin (cell-adhesion lectin on endothelial cells mediating the binding of neutrophils).
組織特異性	Widely expressed. Highest levels in pancreas, skeletal muscle, placenta, heart, testis and ovary. Also found in the kidney, liver, lung and brain.
配列類似性	Contains 16 Cys-rich GLG1 repeats.
発生段階	Expressed both in adult and fetal tissues.
翻訳後修飾	Fucosylation is essential for binding to E-selectin. N-glycosylated. Contains sialic acid residues.
細胞内局在	Golgi apparatus membrane.

## 画像



Formalin-fixed, paraffin-embedded human gallbladder tissue stained for Golgi Complex using ab270733 at 2 µg/ml in immunohistochemical analysis.

Immunohistochemistry (Formalin/PFA-fixed paraffin-embedded sections) - Anti-Golgi Complex antibody [SPM581] (ab270733)

**Please note:** All products are "FOR RESEARCH USE ONLY. NOT FOR USE IN DIAGNOSTIC PROCEDURES"

### **Our Abpromise to you: Quality guaranteed and expert technical support**

---

- Replacement or refund for products not performing as stated on the datasheet
- Valid for 12 months from date of delivery
- Response to your inquiry within 24 hours
  
- We provide support in Chinese, English, French, German, Japanese and Spanish
- Extensive multi-media technical resources to help you
- We investigate all quality concerns to ensure our products perform to the highest standards

If the product does not perform as described on this datasheet, we will offer a refund or replacement. For full details of the Abpromise, please visit <https://www.abcam.co.jp/abpromise> or contact our technical team.

### **Terms and conditions**

---

- Guarantee only valid for products bought direct from Abcam or one of our authorized distributors