


Anti-GNB3 antibody [EPR8862] ab154866

リコンビナント **RabMAb**

2 References [画像数 8](#)

製品の概要

製品名	Anti-GNB3 antibody [EPR8862]
製品の詳細	Rabbit monoclonal [EPR8862] to GNB3
由来種	Rabbit
アプリケーション	適用あり: WB, IHC-P 適用なし: Flow Cyt, ICC/IF or IP
種交差性	交差種: Human 交差が予測される動物種: Mouse, Rat 
免疫原	Synthetic peptide. This information is proprietary to Abcam and/or its suppliers.
ポジティブ・コントロール	HepG2, A673 cell lysate; Human fetal brain tissue lysate; Human fetal lung tissue lysate; Human kidney tissue
特記事項	<p>This product is a recombinant monoclonal antibody, which offers several advantages including:</p> <ul style="list-style-type: none"> - High batch-to-batch consistency and reproducibility - Improved sensitivity and specificity - Long-term security of supply - Animal-free production <p>For more information see here.</p> <p>Our RabMAb[®] technology is a patented hybridoma-based technology for making rabbit monoclonal antibodies. For details on our patents, please refer to RabMAb[®] patents.</p>

製品の特性

製品の状態	Liquid
保存方法	Shipped at 4°C. Upon delivery aliquot and store at -20°C. Avoid repeated freeze / thaw cycles.
バッファー	pH: 7.2 Preservative: 0.01% Sodium azide Constituents: 9% PBS, 40% Glycerol (glycerin, glycerine), 0.05% BSA, 50% Tissue culture supernatant
精製度	Tissue culture supernatant
ポリ/モノ	モノクローナル

クローン名EPR8862
アイソタイプIgG

アプリケーション

The Abpromise guarantee **Abpromise保証は、** 次のテスト済みアプリケーションにおけるab154866の使用に適用されます
アプリケーションノートには、推奨の開始希釈率がありますが、適切な希釈率につきましてはご検討ください。

アプリケーション	Abreviews	特記事項
WB		1/1000 - 1/10000. Predicted molecular weight: 37 kDa.
IHC-P		1/50 - 1/100. Perform heat mediated antigen retrieval with citrate buffer pH 6 before commencing with IHC staining protocol.

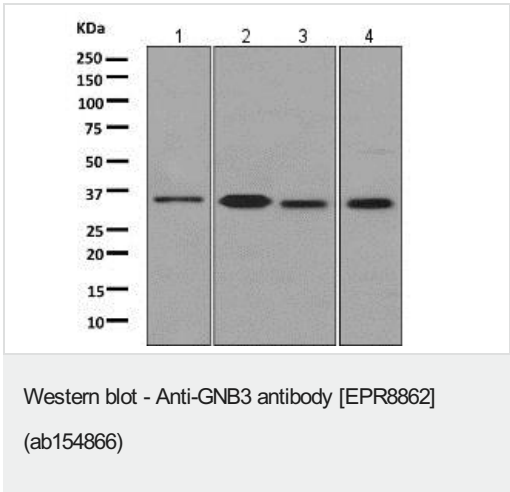
追加情報 Is unsuitable for Flow Cyt, ICC/IF or IP.

ターゲット情報

機能 Guanine nucleotide-binding proteins (G proteins) are involved as a modulator or transducer in various transmembrane signaling systems. The beta and gamma chains are required for the GTPase activity, for replacement of GDP by GTP, and for G protein-effector interaction.

配列類似性 Belongs to the WD repeat G protein beta family.
Contains 7 WD repeats.

画像

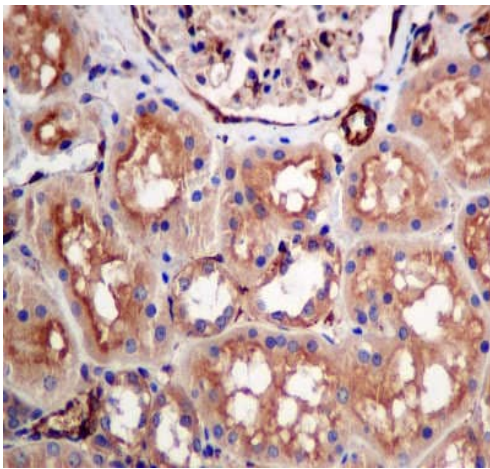


All lanes : Anti-GNB3 antibody [EPR8862] (ab154866) at 1/1000 dilution

- Lane 1 :** HepG2 cell lysate
- Lane 2 :** Human fetal brain tissue lysate
- Lane 3 :** A673 cell lysate
- Lane 4 :** Human fetal lung tissue lysate

Lysates/proteins at 10 µg per lane.

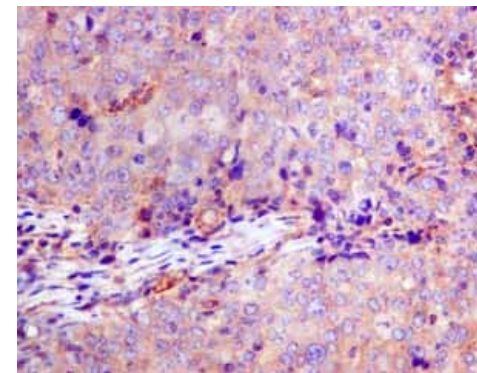
Predicted band size: 37 kDa



Immunohistochemistry (Formalin/PFA-fixed paraffin-embedded sections) - Anti-GNB3 antibody
[EPR8862] (ab154866)

Immunohistochemical analysis of paraffin-embedded Human kidney tissue labeling GNB3 with ab154866 at 1/50.

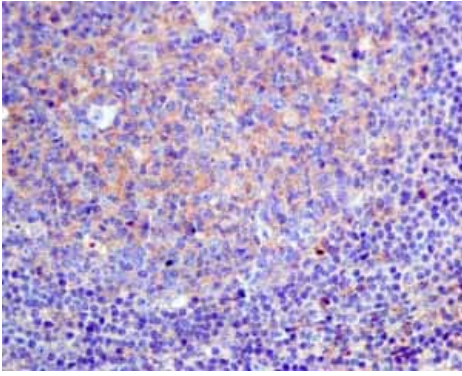
Perform heat mediated antigen retrieval with citrate buffer pH 6 before commencing with IHC staining protocol.



Immunohistochemistry (Formalin/PFA-fixed paraffin-embedded sections) - Anti-GNB3 antibody
[EPR8862] (ab154866)

Immunohistochemical analysis of paraffin embedded Human breast carcinoma tissue using ab154866 showing +ve staining.

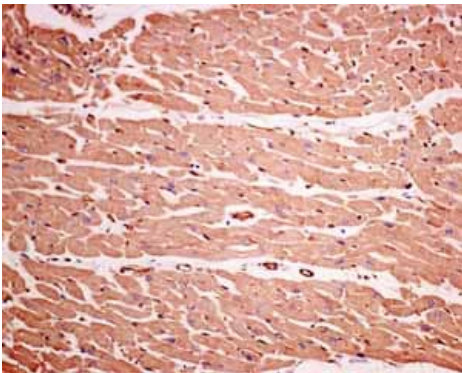
Perform heat mediated antigen retrieval with citrate buffer pH 6 before commencing with IHC staining protocol.



Immunohistochemistry (Formalin/PFA-fixed paraffin-embedded sections) - Anti-GNB3 antibody [EPR8862] (ab154866)

Immunohistochemical analysis of paraffin embedded Human normal tonsil tissue using ab154866 showing +ve staining.

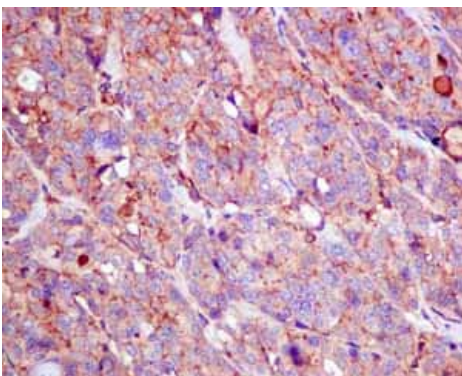
Perform heat mediated antigen retrieval with citrate buffer pH 6 before commencing with IHC staining protocol.



Immunohistochemistry (Formalin/PFA-fixed paraffin-embedded sections) - Anti-GNB3 antibody [EPR8862] (ab154866)

Immunohistochemical analysis of paraffin embedded Human normal heart tissue using ab154866 showing +ve staining.

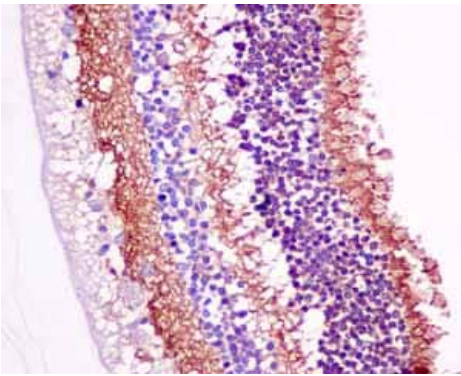
Perform heat mediated antigen retrieval with citrate buffer pH 6 before commencing with IHC staining protocol.



Immunohistochemistry (Formalin/PFA-fixed paraffin-embedded sections) - Anti-GNB3 antibody [EPR8862] (ab154866)

Immunohistochemical analysis of paraffin embedded Human thyroid gland carcinoma tissue using ab154866 showing +ve staining.

Perform heat mediated antigen retrieval with citrate buffer pH 6 before commencing with IHC staining protocol.

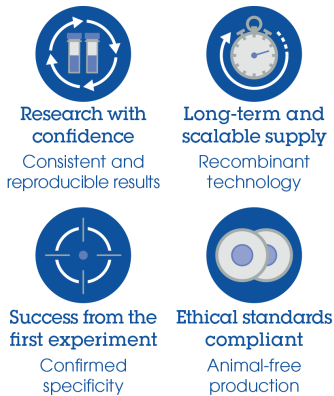


Immunohistochemical analysis of paraffin embedded Human retina tissue using ab154866 showing +ve staining.

Perform heat mediated antigen retrieval with citrate buffer pH 6 before commencing with IHC staining protocol.

Immunohistochemistry (Formalin/PFA-fixed paraffin-embedded sections) - Anti-GNB3 antibody [EPR8862] (ab154866)

Why choose a recombinant antibody?



Anti-GNB3 antibody [EPR8862] (ab154866)

Please note: All products are "FOR RESEARCH USE ONLY. NOT FOR USE IN DIAGNOSTIC PROCEDURES"

Our Abpromise to you: Quality guaranteed and expert technical support

- Replacement or refund for products not performing as stated on the datasheet
- Valid for 12 months from date of delivery
- Response to your inquiry within 24 hours
- We provide support in Chinese, English, French, German, Japanese and Spanish
- Extensive multi-media technical resources to help you
- We investigate all quality concerns to ensure our products perform to the highest standards

If the product does not perform as described on this datasheet, we will offer a refund or replacement. For full details of the Abpromise, please visit <https://www.abcam.co.jp/abpromise> or contact our technical team.

Terms and conditions

- Guarantee only valid for products bought direct from Abcam or one of our authorized distributors