


Anti-GM130 antibody [EP892Y] - cis-Golgi Marker ab52649

リコンビナント **RabMAb**

★★★★★ **38 Abreviews** **250 References** 画像数 13

製品の概要

製品名	Anti-GM130 antibody [EP892Y] - cis-Golgi Marker
製品の詳細	Rabbit monoclonal [EP892Y] to GM130 - cis-Golgi Marker
由来種	Rabbit
特異性	Mouse and rat cell lines pc12, 3t3, raw 264.7 were tested positive in WB. However, brain, kidney, spleen and heart were negative from the two species.
アプリケーション	適用あり: Flow Cyt (Intra), ICC/IF, IHC-P, WB, IP
種交差性	交差種: Dog, Human, African green monkey 交差が予測される動物種: Cow, Monkey  非交差種: Mouse, Rat
免疫原	Synthetic peptide within Human GM130 aa 1-100 (N terminal). The exact sequence is proprietary. Database link: Q08379
ポジティブ・コントロール	WB: HeLa, MCF7, MDCK(NBL-2), MDBK(BL-1) and COS-1 cell lysates; MDCK 2 cell lysate; COS-7 cell lysate. IHC-P: Human cervix carcinoma and liver tissues. ICC/IF: HeLa and ARPE-19 cells. Flow Cyt (intra): HeLa cells. IP: HeLa whole cell lysate.
特記事項	This product is a recombinant monoclonal antibody, which offers several advantages including: <ul style="list-style-type: none"> - High batch-to-batch consistency and reproducibility - Improved sensitivity and specificity - Long-term security of supply - Animal-free production For more information see here . Our RabMAb [®] technology is a patented hybridoma-based technology for making rabbit monoclonal antibodies. For details on our patents, please refer to RabMAb[®] patents .

製品の特性

製品の状態	Liquid
保存方法	Shipped at 4°C. Store at +4°C short term (1-2 weeks). Upon delivery aliquot. Store at -20°C. Stable for 12 months at -20°C.
バッファー	pH: 7.20 Preservative: 0.01% Sodium azide Constituents: 59% PBS, 40% Glycerol, 0.05% BSA

精製度	Protein A purified
ポリ/モノ	モノクローナル
クローン名	EP892Y
アイソタイプ	IgG

アプリケーション

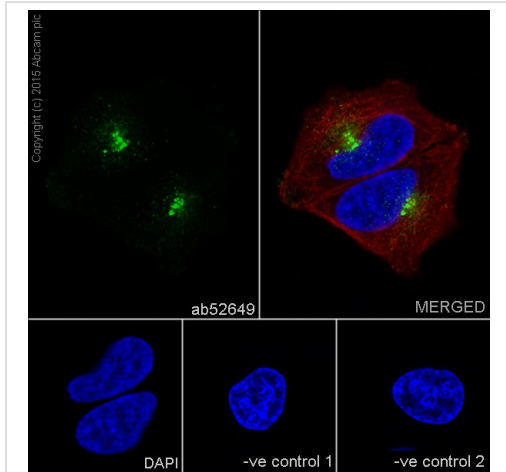
The Abpromise guarantee Abpromise保証は、 次のテスト済みアプリケーションにおけるab52649の使用に適用されます
 アプリケーションノートには、推奨の開始希釈率がありますが、適切な希釈率につきましてはご検討ください。

アプリケーション	Abreviews	特記事項
Flow Cyt (Intra)		1/20.
ICC/IF	★★★★★ (20)	1/50 - 1/250. PFA fixation should be most suitable.
IHC-P		1/100 - 1/500. Perform heat mediated antigen retrieval with Tris/EDTA buffer pH 9.0 before commencing with IHC staining protocol. See <u>IHC antigen retrieval protocols.</u> Overnight incubation is recommended.
WB	★★★★★ (11)	1/1000 - 1/10000. Detects a band of approximately 140 kDa (predicted molecular weight: 112 kDa).
IP		1/20 - 1/50.

ターゲット情報

機能	Golgi auto-antigen; probably involved in maintaining cis-Golgi structure.
配列類似性	Belongs to the GOLGA2 family.
ドメイン	Extended rod-like protein with coiled-coil domains.
細胞内局在	Golgi apparatus > Golgi stack membrane.

画像

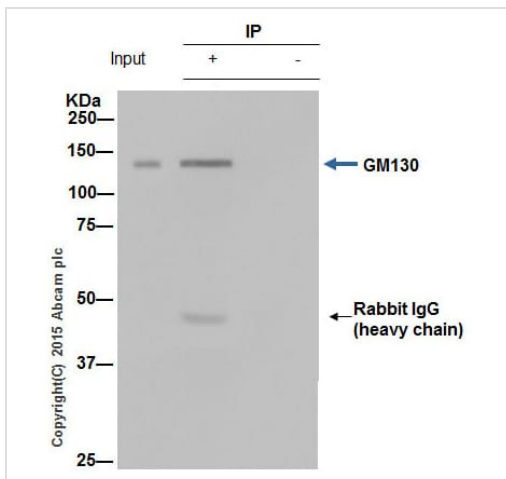


Immunocytochemistry/ Immunofluorescence - Anti-GM130 antibody [EP892Y] - cis-Golgi Marker (ab52649)

Immunocytochemistry/Immunofluorescence analysis of HeLa cells labelling GM130 with purified ab52649 at 1/50. Cells were fixed with 4% paraformaldehyde and permeabilized with 0.1% Triton X-100. **ab150077**, an Alexa Fluor® 488-conjugated goat anti-rabbit IgG (1/500) was used as the secondary antibody. DAPI (blue) was used as the nuclear counterstain. **ab7291**, a mouse anti-tubulin (1/1000) and **ab150120**, an Alexa Fluor® 594-conjugated goat anti-mouse IgG (1/500) were also used.

Control 1: primary antibody (1/50) and secondary antibody, **ab150120**, an Alexa Fluor® 594-conjugated goat anti-mouse IgG (1/500).

Control 2: **ab7291** (1/1000) and secondary antibody, **ab150077**, an Alexa Fluor® 488-conjugated goat anti-rabbit IgG (1/500).



Immunoprecipitation - Anti-GM130 antibody [EP892Y] - cis-Golgi Marker (ab52649)

ab52649 (purified) at 1/20 immunoprecipitating GM130 in HeLa whole cell lysate.

For western blotting, **ab131366** VeriBlot for IP (HRP) was used for detection (1/1500).

Blocking buffer and concentration: 5% NFDM/TBST.

Diluting buffer and concentration: 5% NFDM /TBST.

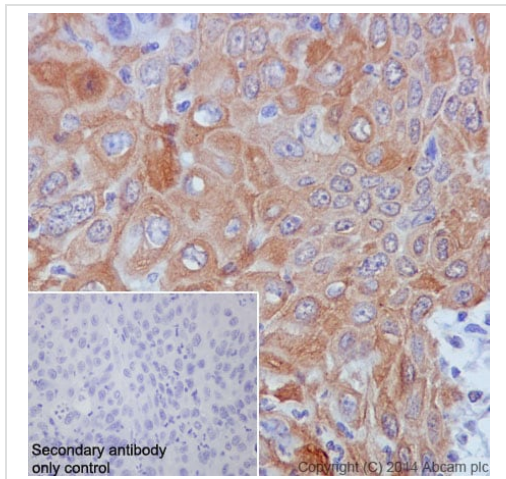
All lanes :

Lane 1 : HeLa whole cell lysate at 10 µg

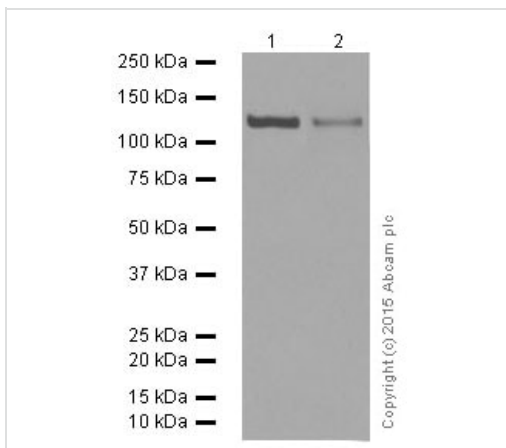
Lane 2 : ab52649 + HeLa whole cell lysate at 10 µg

Lane 3 : Rabbit monoclonal IgG (**ab172730**) instead of ab52649 in HeLa whole cell lysate

Observed band size: 130 kDa



Immunohistochemistry (Formalin/PFA-fixed paraffin-embedded sections) - Anti-GM130 antibody [EP892Y] - cis-Golgi Marker (ab52649)



Western blot - Anti-GM130 antibody [EP892Y] - cis-Golgi Marker (ab52649)

Immunohistochemistry (Formalin/PFA-fixed paraffin-embedded sections) analysis of human cervix carcinoma tissue labelling GM130 with purified ab52649 at 1/100. Heat mediated antigen retrieval was performed using Tris/EDTA buffer pH 9. **ab97051**, a HRP-conjugated goat anti-rabbit IgG (H+L) was used as the secondary antibody (1/500). Negative control using PBS instead of primary antibody. Counterstained with hematoxylin.

All lanes : Anti-GM130 antibody [EP892Y] - cis-Golgi Marker (ab52649) at 1/1000 dilution (purified)

Lane 1 : HeLa cell lysate

Lane 2 : MCF7 cell lysate

Lysates/proteins at 20 µg per lane.

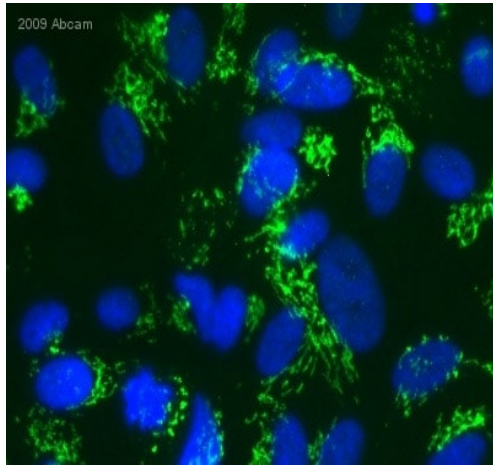
Secondary

All lanes : Peroxidase-conjugated goat anti-rabbit IgG, (H+L) at 1/1000 dilution

Predicted band size: 112 kDa

Observed band size: 130 kDa

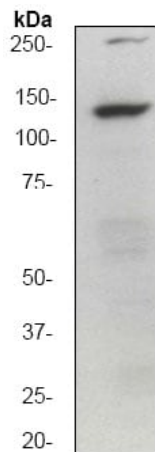
Blocking and dilution buffer: 5% NFDM/TBST.



Immunocytochemistry/ Immunofluorescence - Anti-GM130 antibody [EP892Y] - cis-Golgi Marker (ab52649)

This image is courtesy of an Abreview submitted by Dr Vladimir Milenkovic

Unpurified ab52649 staining GM130 in human ARPE-19 cells by ICC/IF (immunocytochemistry/immunofluorescence). Cells were formaldehyde fixed, permeabilized by 0.5% TX-100 and blocked with 5% serum for 20 minutes at 25°C. The sample was incubated with the primary antibody (1/500 in 1% goat serum, 0.1%TX100, 1 x PBS) for 16 hours at 4°C. An Alexa Fluor® 488-conjugated Goat anti-rabbit polyclonal (1/500) was used as the secondary.



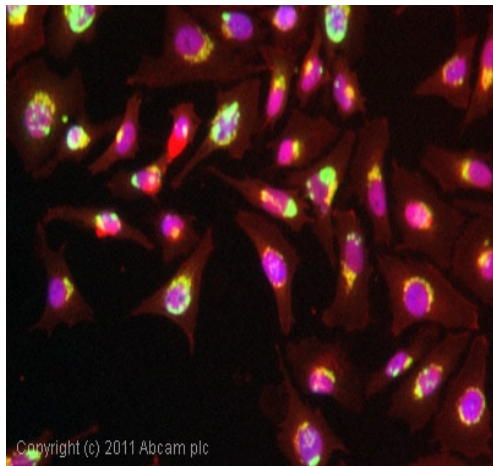
Western blot - Anti-GM130 antibody [EP892Y] - cis-Golgi Marker (ab52649)

Anti-GM130 antibody [EP892Y] - cis-Golgi Marker (ab52649) at 1/200000 dilution (unpurified) + HeLa cell lysate at 10 µg

Secondary

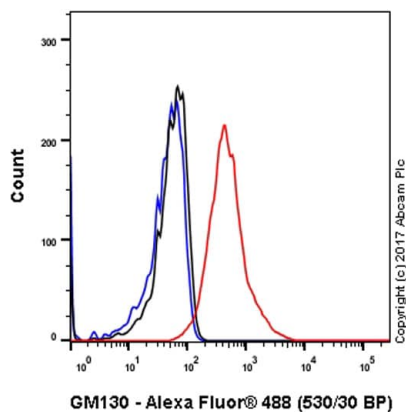
HRP-conjugated goat anti-rabbit IgG at 1/2000 dilution

Predicted band size: 112 kDa



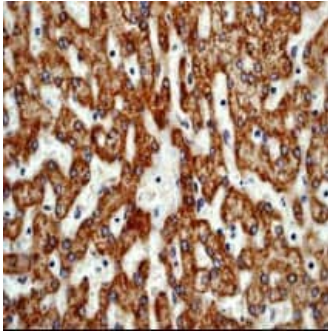
Immunocytochemistry/ Immunofluorescence - Anti-GM130 antibody [EP892Y] - cis-Golgi Marker (ab52649)

ICC/IF image of unpurified **ab52946** stained HeLa cells. The cells were 4% PFA fixed (10 min) and then incubated in 1% BSA / 10% normal goat serum / 0.3M glycine in 0.1% PBS-Tween for 1h to permeabilise the cells and block non-specific protein-protein interactions. The cells were then incubated with the antibody (unpurified **ab52946**, 1µg/ml) overnight at +4°C. The secondary antibody (green) was DyLight® 488 goat anti-rabbit IgG - H&L, pre-adsorbed (**ab96899**) used at a 1/250 dilution for 1h. Alexa Fluor® 594 WGA was used to label plasma membranes (red) at a 1/200 dilution for 1h. DAPI was used to stain the cell nuclei (blue) at a concentration of 1.43µM.



Flow Cytometry (Intracellular) - Anti-GM130 antibody [EP892Y] - cis-Golgi Marker (ab52649)

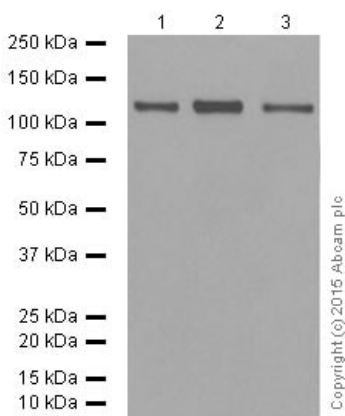
Intracellular Flow Cytometry analysis of HeLa (human cervix adenocarcinoma) cells labeling GM130 (red) with ab52649 at a 1/20 dilution. Cells were fixed with 4% paraformaldehyde and permeabilized with 90% methanol. A goat anti-rabbit IgG (Alexa Fluor® 488) (**ab150077**) was used as the secondary antibody at a 1/2000 dilution. Black - Rabbit monoclonal IgG (**ab172730**). Blue (unlabeled control) - Cells without incubation with the primary and secondary antibodies.



Immunohistochemistry (Formalin/PFA-fixed paraffin-embedded sections) - Anti-GM130 antibody [EP892Y] - cis-Golgi Marker (ab52649)

Immunohistochemistry (Formalin/PFA-fixed paraffin-embedded sections) analysis of human liver tissue labelling GM130 with unpurified ab52649 at a dilution of 1/500.

Perform heat mediated antigen retrieval before commencing with IHC staining protocol.



Western blot - Anti-GM130 antibody [EP892Y] - cis-Golgi Marker (ab52649)

All lanes : Anti-GM130 antibody [EP892Y] - cis-Golgi Marker (ab52649) at 1/5000 dilution (purified)

Lane 1 : MDCK(NBL-2) cell lysate

Lane 2 : MDCK(BL-1) cell lysate

Lane 3 : COS-1 cell lysate

Lysates/proteins at 20 µg per lane.

Secondary

All lanes : Peroxidase-conjugated goat anti-rabbit IgG, (H+L) at 1/1000 dilution

Predicted band size: 112 kDa

Observed band size: 130 kDa

Blocking and dilution buffer: 5% NFDM/TBST.

170 —
130 —
100 —
70 —
55 —
45 —
30 —

2010 Abcam

Western blot - Anti-GM130 antibody [EP892Y] - cis-Golgi Marker (ab52649)

MDCK 2 cells at 25 µg

Developed using the ECL technique.

Performed under reducing conditions.

Predicted band size: 112 kDa

Blocking and dilution buffer: 1XPBS-Tween, 5% milk

Exposure: 10 minutes.

250 —
130 —
100 —
70 —
55 —
40 —
35 —
25 —
15 —

2018 Abcam

Western blot - Anti-GM130 antibody [EP892Y] - cis-Golgi Marker (ab52649)

COS-7 Cell Line from African green monkey kidney whole cell lysate

Predicted band size: 112 kDa

Blocking and dilution buffer: PBS, 0.05% Tween

Exposure: 5 minutes.

Why choose a recombinant antibody?



Research with confidence
Consistent and reproducible results



Long-term and scalable supply
Recombinant technology



Success from the first experiment
Confirmed specificity



Ethical standards compliant
Animal-free production

Anti-GM130 antibody [EP892Y] - cis-Golgi Marker (ab52649)

Please note: All products are "FOR RESEARCH USE ONLY. NOT FOR USE IN DIAGNOSTIC PROCEDURES"

Our Abpromise to you: Quality guaranteed and expert technical support

- Replacement or refund for products not performing as stated on the datasheet
- Valid for 12 months from date of delivery
- Response to your inquiry within 24 hours

- We provide support in Chinese, English, French, German, Japanese and Spanish
- Extensive multi-media technical resources to help you
- We investigate all quality concerns to ensure our products perform to the highest standards

If the product does not perform as described on this datasheet, we will offer a refund or replacement. For full details of the Abpromise, please visit <https://www.abcam.co.jp/abpromise> or contact our technical team.

Terms and conditions

- Guarantee only valid for products bought direct from Abcam or one of our authorized distributors