


# Anti-Glypican 3 antibody ab101478

KO 評価済

画像数 3

### 製品の概要

製品名	Anti-Glypican 3 antibody
製品の詳細	Rabbit polyclonal to Glypican 3
由来種	Rabbit
アプリケーション	適用あり: ICC/IF, WB
種交差性	交差種: Human 交差が予測される動物種: Mouse, Rat, Cow, Chimpanzee 
免疫原	Synthetic peptide corresponding to Human Glypican 3 aa 100-200 conjugated to keyhole limpet haemocyanin. (Peptide available as <a href="#">ab113760</a> )
ポジティブ・コントロール	This antibody gave a positive signal in the following lysates: Human Kidney Tissue; Human Liver Tissue; HepG2 Whole Cell; HEK293 Whole Cell.
特記事項	<p>The Life Science industry has been in the grips of a reproducibility crisis for a number of years. Abcam is leading the way in addressing this with our range of recombinant monoclonal antibodies and knockout edited cell lines for gold-standard validation. Please check that this product meets your needs before purchasing.</p> <p>If you have any questions, special requirements or concerns, please send us an inquiry and/or contact our Support team ahead of purchase. Recommended alternatives for this product can be found below, along with publications, customer reviews and Q&amp;As</p>

### 製品の特性

製品の状態	Liquid
保存方法	Shipped at 4°C. Store at +4°C short term (1-2 weeks). Upon delivery aliquot. Store at -20°C or -80°C. Avoid freeze / thaw cycle.
バッファー	pH: 7.40 Preservative: 0.02% Sodium azide Constituent: PBS

Batches of this product that have a concentration < 1mg/ml may have BSA added as a stabilising agent. If you would like information about the formulation of a specific lot, please contact our

scientific support team who will be happy to help.

精製度	Immunogen affinity purified
ポリ/モノ	ポリクローナル
アイソタイプ	IgG

#### アプリケーション

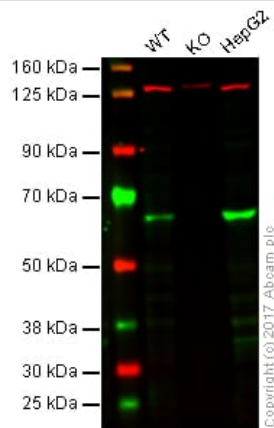
**The Abpromise guarantee** **Abpromise保証は、次のテスト済みアプリケーションにおけるab101478の使用に適用されます**  
アプリケーションノートには、推奨の開始希釈率がありますが、適切な希釈率につきましてはご検討ください。

アプリケーション	Abreviews	特記事項
ICC/IF		Use a concentration of 5 µg/ml.
WB		Use a concentration of 1 µg/ml. Predicted molecular weight: 66 kDa.

#### ターゲット情報

機能	Cell surface proteoglycan that bears heparan sulfate. Inhibits the dipeptidyl peptidase activity of DPP4. May be involved in the suppression/modulation of growth in the predominantly mesodermal tissues and organs. May play a role in the modulation of IGF2 interactions with its receptor and thereby modulate its function. May regulate growth and tumor predisposition.
組織特異性	Highly expressed in lung, liver and kidney.
関連疾患	Defects in GPC3 are the cause of Simpson-Golabi-Behmel syndrome type 1 (SGBS1) [MIM:312870]; also known as Simpson dysmorphia syndrome (SDYS). SGBS is a condition characterized by pre- and postnatal overgrowth (gigantism) with visceral and skeletal anomalies.
配列類似性	Belongs to the glypican family.
細胞内局在	Cell membrane and Secreted > extracellular space.

#### 画像



Western blot - Anti-Glypican 3 antibody (ab101478)

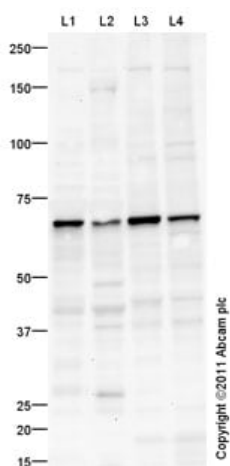
**Lane 1:** Wild-type HAP1 whole cell lysate (20 µg)

**Lane 2:** Glypican 3 knockout HAP1 whole cell lysate (20 µg)

**Lane 3:** HepG2 whole cell lysate (20 µg)

**Lanes 1 - 3:** Merged signal (red and green). Green - ab101478 observed at 66 kDa. Red - loading control, **ab18058**, observed at 130 kDa.

ab101478 was shown to specifically react with Glypican 3 in wild-type HAP1 cells as signal was lost in Glypican 3 knockout cells. Wild-type and Glypican 3 knockout samples were subjected to SDS-PAGE. ab101478 and **ab18058** (Mouse anti-Vinculin loading control) were incubated overnight at 4°C at 1 µg/ml and 1/20000 dilution respectively. Blots were developed with Goat anti-Rabbit IgG H&L (IRDye® 800CW) preabsorbed **ab216773** and Goat anti-Mouse IgG H&L (IRDye® 680RD) preabsorbed **ab216776** secondary antibodies at 1/10000 dilution for 1 hour at room temperature before imaging.



Western blot - Anti-Glypican 3 antibody (ab101478)

**All lanes :** Anti-Glypican 3 antibody (ab101478) at 1 µg/ml

**Lane 1 :** Human kidney tissue lysate - total protein (**ab30203**)

**Lane 2 :** Human liver tissue lysate - total protein (**ab29889**)

**Lane 3 :** HepG2 (Human hepatocellular liver carcinoma cell line) Whole Cell Lysate

**Lane 4 :** HEK293 (Human embryonic kidney cell line) Whole Cell Lysate

Lysates/proteins at 10 µg per lane.

### Secondary

**All lanes :** Goat Anti-Rabbit IgG H&L (HRP) preadsorbed (**ab97080**) at 1/5000 dilution

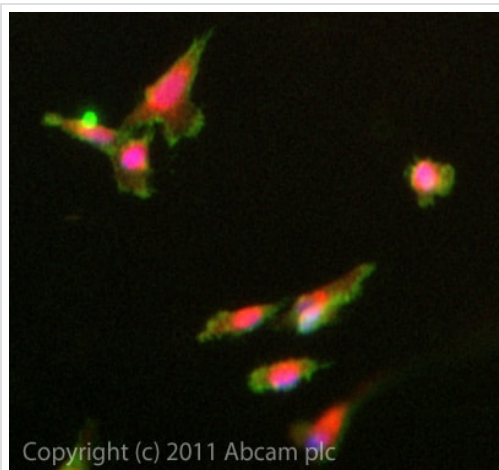
Developed using the ECL technique.

Performed under reducing conditions.

**Predicted band size:** 66 kDa

**Observed band size:** 66 kDa

**Exposure time:** 20 minutes



Immunocytochemistry/ Immunofluorescence - Anti-Glypican 3 antibody (ab101478)

ICC/IF image of ab101478 stained SKNSH cells. The cells were 4% formaldehyde fixed (10 min) and then incubated in 1%BSA / 10% normal goat serum / 0.3M glycine in 0.1% PBS-Tween for 1h to permeabilise the cells and block non-specific protein-protein interactions. The cells were then incubated with the antibody (ab101478, 5µg/ml) overnight at +4°C. The secondary antibody (green) was **ab96899**, DyLight® 488 goat anti-rabbit IgG (H+L) used at a 1/250 dilution for 1h. Alexa Fluor® 594 WGA was used to label plasma membranes (red) at a 1/200 dilution for 1h. DAPI was used to stain the cell nuclei (blue) at a concentration of 1.43µM.

**Please note:** All products are "FOR RESEARCH USE ONLY. NOT FOR USE IN DIAGNOSTIC PROCEDURES"

### Our Abpromise to you: Quality guaranteed and expert technical support

---

- Replacement or refund for products not performing as stated on the datasheet
- Valid for 12 months from date of delivery
- Response to your inquiry within 24 hours
- We provide support in Chinese, English, French, German, Japanese and Spanish
- Extensive multi-media technical resources to help you
- We investigate all quality concerns to ensure our products perform to the highest standards

If the product does not perform as described on this datasheet, we will offer a refund or replacement. For full details of the Abpromise, please visit <https://www.abcam.co.jp/abpromise> or contact our technical team.

### Terms and conditions

---

- Guarantee only valid for products bought direct from Abcam or one of our authorized distributors