

Anti-Glycogen synthase 1/GYS1 (phospho S641) antibody [EP852Y] - BSA and Azide free ab247514

リコンビナント RabMAb

画像数 5

製品の概要

製品名	Anti-Glycogen synthase 1/GYS1 (phospho S641) antibody [EP852Y] - BSA and Azide free
製品の詳細	Rabbit monoclonal [EP852Y] to Glycogen synthase 1/GYS1 (phospho S641) - BSA and Azide free
由来種	Rabbit
アプリケーション	適用あり: IHC-P, WB, Dot blot 適用なし: Flow Cyt or ICC/IF
種交差性	交差種: Mouse, Human
免疫原	Synthetic peptide. This information is proprietary to Abcam and/or its suppliers.
特記事項	<p>ab247514 is the carrier-free version of ab81230.</p> <p>Our carrier-free antibodies are typically supplied in a PBS-only formulation, purified and free of BSA, sodium azide and glycerol. The carrier-free buffer and high concentration allow for increased conjugation efficiency.</p> <p>This conjugation-ready format is designed for use with fluorochromes, metal isotopes, oligonucleotides, and enzymes, which makes them ideal for antibody labelling, functional and cell-based assays, flow-based assays (e.g. mass cytometry) and Multiplex Imaging applications.</p> <p>Use our conjugation kits for antibody conjugates that are ready-to-use in as little as 20 minutes with <1 minute hands-on-time and 100% antibody recovery: available for fluorescent dyes, HRP, biotin and gold.</p> <p>This product is compatible with the Maxpar[®] Antibody Labeling Kit from Fluidigm, without the need for antibody preparation. Maxpar[®] is a trademark of Fluidigm Canada Inc.</p> <p>This product is a recombinant monoclonal antibody, which offers several advantages including:</p> <ul style="list-style-type: none">- High batch-to-batch consistency and reproducibility- Improved sensitivity and specificity- Long-term security of supply- Animal-free production <p>For more information see here.</p> <p>Our RabMAb[®] technology is a patented hybridoma-based technology for making rabbit monoclonal antibodies. For details on our patents, please refer to RabMAb[®] patents.</p>

Rat: We have preliminary internal testing data to indicate this antibody may not react with this species. Please contact us for more information.

製品の特性

製品の状態	Liquid
保存方法	Shipped at 4°C. Store at +4°C. Do Not Freeze.
バッファー	pH: 7.2 Constituent: PBS
キャリア・フリー	はい
精製度	Protein A purified
ポリ/モノ	モノクローナル
クローン名	EP852Y
アイソタイプ	IgG

アプリケーション

The Abpromise guarantee **Abpromise保証は、次のテスト済みアプリケーションにおけるab247514の使用に適用されます**
アプリケーションノートには、推奨の開始希釈率がありますが、適切な希釈率につきましてはご検討ください。

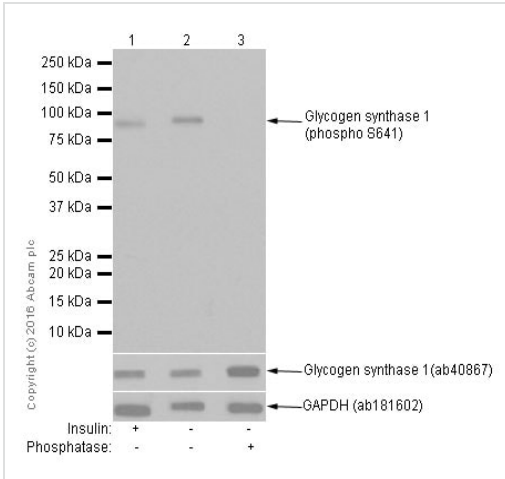
アプリケーション	Abreviews	特記事項
IHC-P		Use at an assay dependent concentration. Perform heat mediated antigen retrieval with Tris/EDTA buffer pH 9.0 before commencing with IHC staining protocol.
WB		Use at an assay dependent concentration. Predicted molecular weight: 85 kDa.
Dot blot		Use at an assay dependent concentration.

追加情報 Is unsuitable for Flow Cyt or ICC/IF.

ターゲット情報

機能	Transfers the glycosyl residue from UDP-Glc to the non-reducing end of alpha-1,4-glucan.
パスウェイ	Glycan biosynthesis; glycogen biosynthesis.
関連疾患	Defects in GYS1 are the cause of muscle glycogen storage disease type 0 (GSD0b) [MIM:611556]; also known as muscle glycogen synthase deficiency. GSD0b is a metabolic disorder characterized by fasting hypoglycemia presenting in infancy or early childhood. The role of muscle glycogen is to provide critical energy during bursts of activity and sustained muscle work.
配列類似性	Belongs to the glycosyltransferase 3 family.

画像



Western blot - Anti-Glycogen synthase 1/GYS1 (phospho S641) antibody [EP852Y] - BSA and Azide free (ab247514)

All lanes : Anti-Glycogen synthase 1/GYS1 (phospho S641) antibody [EP852Y] (**ab81230**) at 1/2000 dilution

Lane 1 : HeLa (Human epithelial cell line from cervix adenocarcinoma) treated with insulin at 20 ug/mL for 15 minutes. Whole cell lysates

Lane 2 : Untreated HeLa (Human epithelial cell line from cervix adenocarcinoma) whole cell lysates

Lane 3 : Untreated HeLa (Human epithelial cell line from cervix adenocarcinoma) whole cell lysates. Then the membrane was incubated with phosphatase.

Lysates/proteins at 15 µg per lane.

Secondary

All lanes : Goat Anti-Rabbit IgG H&L (HRP) (**ab97051**) at 1/100000 dilution

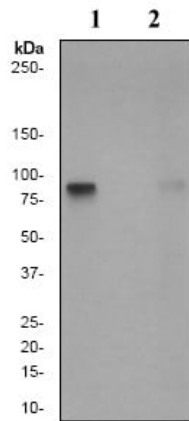
Predicted band size: 85 kDa

Observed band size: 85 kDa

Exposure time: 1 second

This data was developed using **ab81230**, the same antibody clone in a different buffer formulation.

Blocking and dilution buffer: 5% NFDM/TBST.



Western blot - Anti-Glycogen synthase 1/GYS1 (phospho S641) antibody [EP852Y] - BSA and Azide free (ab247514)

All lanes : Anti-Glycogen synthase 1/GYS1 (phospho S641) antibody [EP852Y] (**ab81230**) at 1/10000 dilution

Lane 1 : Mouse muscle tissue lysate, untreated

Lane 2 : Mouse muscle tissue lysate, treated with AP

Lysates/proteins at 10 µg per lane.

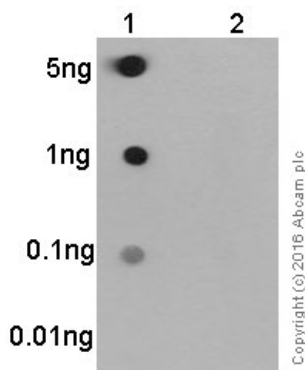
Secondary

All lanes : HRP labeled Goat anti-Rabbit at 1/2000 dilution

Predicted band size: 85 kDa

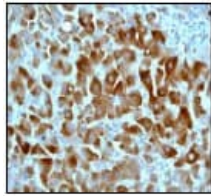
Observed band size: 85 kDa

This data was developed using **ab81230**, the same antibody clone in a different buffer formulation.



Dot Blot - Anti-Glycogen synthase 1/GYS1 (phospho S641) antibody [EP852Y] - BSA and Azide free (ab247514)

This data was developed using **ab81230**, the same antibody clone in a different buffer formulation. Dot blot analysis of glycogen synthase 1/GYS1 (phospho S641) phospho peptide (Lane 1) and glycogen synthase 1/GYS1 non-phospho peptide (Lane 2) labeling synthase 1 (phospho S641) with **ab81230** at a dilution of 1/1000. **ab97051** (Peroxidase conjugated goat anti-rabbit IgG) (H+L) at 1/100 000 was used as the secondary antibody. Blocking and diluting buffer: 5% NFDM/TBST. Exposure time: 3 minutes.



Immunohistochemistry (Formalin/PFA-fixed paraffin-embedded sections) - Anti-Glycogen synthase 1/GYS1 (phospho S641) antibody [EP852Y] - BSA and Azide free (ab247514)

This data was developed using **ab81230**, the same antibody clone in a different buffer formulation. Immunohistochemical analysis of Human liver tissue, using 1/100 **ab81230**. Perform heat mediated antigen retrieval with EDTA buffer pH 9 before commencing with IHC staining protocol.

Why choose a recombinant antibody?



Research with confidence
Consistent and reproducible results



Long-term and scalable supply
Recombinant technology



Success from the first experiment
Confirmed specificity



Ethical standards compliant
Animal-free production

Anti-Glycogen synthase 1/GYS1 (phospho S641) antibody [EP852Y] - BSA and Azide free (ab247514)

Please note: All products are "FOR RESEARCH USE ONLY. NOT FOR USE IN DIAGNOSTIC PROCEDURES"

Our Abpromise to you: Quality guaranteed and expert technical support

- Replacement or refund for products not performing as stated on the datasheet
- Valid for 12 months from date of delivery
- Response to your inquiry within 24 hours
- We provide support in Chinese, English, French, German, Japanese and Spanish
- Extensive multi-media technical resources to help you
- We investigate all quality concerns to ensure our products perform to the highest standards

If the product does not perform as described on this datasheet, we will offer a refund or replacement. For full details of the Abpromise, please visit <https://www.abcam.co.jp/abpromise> or contact our technical team.

Terms and conditions

- Guarantee only valid for products bought direct from Abcam or one of our authorized distributors