


Anti-Glutathione Synthetase antibody [EPR6563] ab133592

KO 評価済 リコンビナント RabMAb

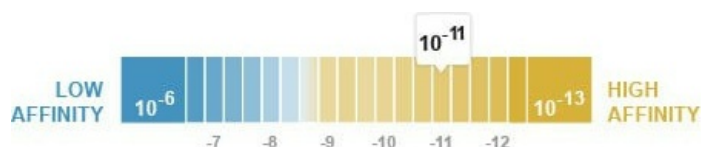
7 References 画像数 6

製品の概要

製品名	Anti-Glutathione Synthetase antibody [EPR6563]
製品の詳細	Rabbit monoclonal [EPR6563] to Glutathione Synthetase
由来種	Rabbit
アプリケーション	適用あり: WB, IHC-P, Flow Cyt (Intra) 適用なし: IP
種交差性	交差種: Human 交差が予測される動物種: Mouse, Rat 
免疫原	Synthetic peptide within Human Glutathione Synthetase aa 350-450 (internal sequence). The exact sequence is proprietary. (Peptide available as ab211544)
ポジティブ・コントロール	293T, HeLa, Daudi and HT-1080 cell lysates; Human colon tissue
特記事項	This product is a recombinant monoclonal antibody, which offers several advantages including: <ul style="list-style-type: none"> - High batch-to-batch consistency and reproducibility - Improved sensitivity and specificity - Long-term security of supply - Animal-free production For more information see here . Our RabMAb [®] technology is a patented hybridoma-based technology for making rabbit monoclonal antibodies. For details on our patents, please refer to RabMAb[®] patents .

製品の特性

製品の状態	Liquid
保存方法	Shipped at 4°C. Store at -20°C. Stable for 12 months at -20°C.
解離定数 (K _D 値)	K _D = 2.74 x 10 ⁻¹¹ M



[Learn more about K_D](#)

バッファー	pH: 7.20 Preservative: 0.01% Sodium azide Constituents: 9% PBS, 40% Glycerol (glycerin, glycerine), 0.05% BSA, 50% Tissue culture supernatant
精製度	Protein A purified
ポリ/モノ	モノクローナル
クローン名	EPR6563
アイソタイプ	IgG

アプリケーション

The Abpromise guarantee **Abpromise保証は、次のテスト済みアプリケーションにおけるab133592の使用に適用されます**
アプリケーションノートには、推奨の開始希釈率がありますが、適切な希釈率につきましてはご確認ください。

アプリケーション	Abreviews	特記事項
WB		1/1000 - 1/10000. Predicted molecular weight: 52 kDa.
IHC-P		1/50 - 1/100. Perform heat mediated antigen retrieval with citrate buffer pH 6 before commencing with IHC staining protocol.
Flow Cyt (Intra)		1/100 - 1/1000. ab172730 - Rabbit monoclonal IgG, is suitable for use as an isotype control with this antibody.

追加情報 Is unsuitable for IP.

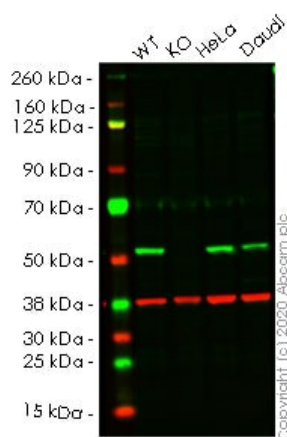
ターゲット情報

パスウェイ Sulfur metabolism; glutathione biosynthesis; glutathione from L-cysteine and L-glutamate: step 2/2.

関連疾患 Defects in GSS are the cause of glutathione synthetase deficiency (GSS deficiency) [MIM:266130]; also known as 5-oxoprolinuria or pyroglutamic aciduria. It is a severe form characterized by an increased rate of hemolysis and defective function of the central nervous system.
Defects in GSS are the cause of glutathione synthetase deficiency of erythrocytes (GLUSYNDE) [MIM:231900]. Glutathione synthetase deficiency of erythrocytes is a mild form causing hemolytic anemia.

配列類似性 Belongs to the eukaryotic GSH synthase family.

画像



Western blot - Anti-Glutathione Synthetase antibody [EPR6563] (ab133592)

All lanes : Anti-Glutathione Synthetase antibody [EPR6563] (ab133592) at 1/1000 dilution

Lane 1 : Wild-type HEK-293T cell lysate

Lane 2 : GSS knockout HEK-293T cell lysate

Lane 3 : HeLa cell lysate

Lane 4 : Daudi cell lysate

Lysates/proteins at 20 µg per lane.

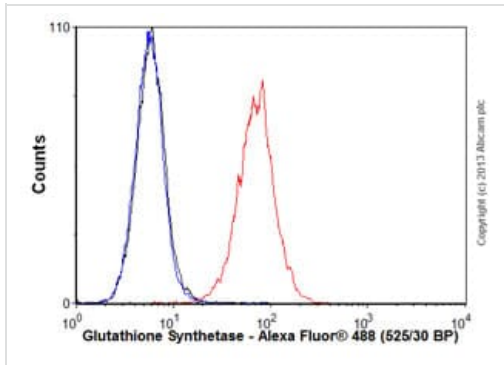
Performed under reducing conditions.

Predicted band size: 52 kDa

Observed band size: 50 kDa

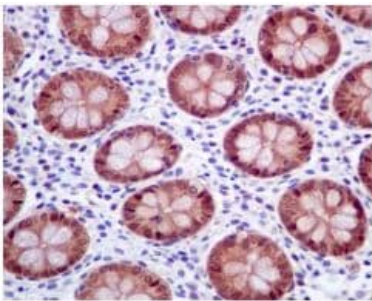
Lanes 1- 4: Merged signal (red and green). Green - ab133592 observed at 50 kDa. Red - Anti-GAPDH antibody [6C5] - Loading Control ([ab8245](#)) observed at 37 kDa.

ab133592 was shown to react with GSS in wild-type HEK-293T cells in western blot. Loss of signal was observed when knockout cell line [ab266342](#) (knockout cell lysate [ab257460](#)) was used. Wild-type HEK-293T and GSS knockout HEK-293T cell lysates were subjected to SDS-PAGE. Membrane was blocked for 1 hour at room temperature in 0.1% TBST with 3% non-fat dried milk. ab133592 and Anti-GAPDH antibody [6C5] - Loading Control ([ab8245](#)) overnight at 4°C at a 1 in 1000 dilution and a 1 in 20000 dilution respectively. Blots were developed with Goat anti-Rabbit IgG H&L (IRDye®800CW) preadsorbed ([ab216773](#)) and Goat anti-Mouse IgG H&L (IRDye®680RD) preadsorbed ([ab216776](#)) secondary antibodies at 1 in 20000 dilution for 1 hour at room temperature before imaging.



Flow Cytometry (Intracellular) - Anti-Glutathione Synthetase antibody [EPR6563] (ab133592)

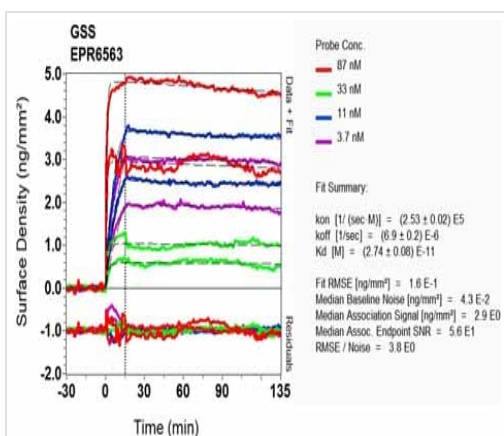
Overlay histogram showing Jurkat cells stained with ab133592 (red line). The cells were fixed with 80% methanol (5 min)/ and then permeabilized with 0.1% PBS-Tween for 20 min. The cells were then incubated in 1x PBS / 10% normal goat serum / 0.3M glycine to block non-specific protein-protein interactions followed by the antibody (ab133592, 1/1000 dilution) for 30 min at 22°C. The secondary antibody used was Alexa Fluor® 488 goat anti-rabbit IgG (H&L) (**ab150077**) at 1/2000 dilution for 30 min at 22°C. Isotype control antibody (black line) was rabbit IgG (monoclonal) (0.1µg/1x10⁶ cells) used under the same conditions. Unlabelled sample (blue line) was also used as a control. Acquisition of >5,000 events were collected using a 20mW Argon ion laser (488nm) and 525/30 bandpass filter.



Immunohistochemistry (Formalin/PFA-fixed paraffin-embedded sections) - Anti-Glutathione Synthetase antibody [EPR6563] (ab133592)

Immunohistochemical analysis of paraffin-embedded Human colon tissue labelling Glutathione Synthetase with ab133592 at 1/50 dilution.

Perform heat mediated antigen retrieval with citrate buffer pH 6 before commencing with IHC staining protocol.

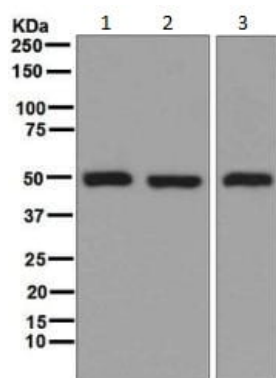


BI-RD Scanning - Anti-Glutathione Synthetase
antibody [EPR6563] (ab133592)

Equilibrium disassociation constant (K_D)

Learn more about K_D

[Click here to learn more about \$K_D\$](#)



Western blot - Anti-Glutathione Synthetase antibody
[EPR6563] (ab133592)

All lanes : Anti-Glutathione Synthetase antibody [EPR6563]
(ab133592) at 1/1000 dilution

Lane 1 : 293T cell lysate

Lane 2 : HeLa cell lysate

Lane 3 : HT-1080 cell lysate

Lysates/proteins at 10 µg per lane.

Secondary

All lanes : HRP labelled Goat anti-Rabbit IgG at 1/2000 dilution

Predicted band size: 52 kDa

Why choose a recombinant antibody?



Research with confidence
Consistent and reproducible results



Long-term and scalable supply
Recombinant technology



Success from the first experiment
Confirmed specificity



Ethical standards compliant
Animal-free production

Anti-Glutathione Synthetase antibody [EPR6563]
(ab133592)

Please note: All products are "FOR RESEARCH USE ONLY. NOT FOR USE IN DIAGNOSTIC PROCEDURES"

Our Abpromise to you: Quality guaranteed and expert technical support

- Replacement or refund for products not performing as stated on the datasheet
- Valid for 12 months from date of delivery
- Response to your inquiry within 24 hours
- We provide support in Chinese, English, French, German, Japanese and Spanish
- Extensive multi-media technical resources to help you
- We investigate all quality concerns to ensure our products perform to the highest standards

If the product does not perform as described on this datasheet, we will offer a refund or replacement. For full details of the Abpromise, please visit <https://www.abcam.co.jp/abpromise> or contact our technical team.

Terms and conditions

- Guarantee only valid for products bought direct from Abcam or one of our authorized distributors