


Anti-Glutaredoxin 1 antibody ab45953

★★★★★ [2 Abreviews](#) [20 References](#) [画像数 5](#)

製品の概要

製品名	Anti-Glutaredoxin 1 antibody
製品の詳細	Rabbit polyclonal to Glutaredoxin 1
由来種	Rabbit
アプリケーション	適用あり: IHC-P, IP, ICC/IF, WB
種交差性	交差種: Human 交差が予測される動物種: Mouse, Rat, Rabbit, Cow, Pig 
免疫原	Synthetic peptide corresponding to Human Glutaredoxin 1 aa 50 to the C-terminus (C terminal) conjugated to keyhole limpet haemocyanin. (Peptide available as ab45952)
ポジティブ・コントロール	Recombinant Human Glutaredoxin 1 protein (ab86987) can be used as a positive control in WB. This antibody gave a positive signal in the following whole cell lysates: HeLa (Human epithelial carcinoma cell line) Jurkat (Human T cell lymphoblast-like cell line)
特記事項	<p>The Life Science industry has been in the grips of a reproducibility crisis for a number of years. Abcam is leading the way in addressing this with our range of recombinant monoclonal antibodies and knockout edited cell lines for gold-standard validation. Please check that this product meets your needs before purchasing.</p> <p>If you have any questions, special requirements or concerns, please send us an inquiry and/or contact our Support team ahead of purchase. Recommended alternatives for this product can be found below, along with publications, customer reviews and Q&As</p>

製品の特性

製品の状態	Liquid
保存方法	Shipped at 4°C. Store at +4°C short term (1-2 weeks). Upon delivery aliquot. Store at -20°C or -80°C. Avoid freeze / thaw cycle.
バッファー	pH: 7.40 Preservative: 0.02% Sodium azide Constituent: PBS
	Batches of this product that have a concentration < 1mg/ml may have BSA added as a stabilising agent. If you would like information about the formulation of a specific lot, please contact our scientific support team who will be happy to help.

精製度	Immunogen affinity purified
ポリ/モノ	ポリクローナル
アイソタイプ	IgG

アプリケーション

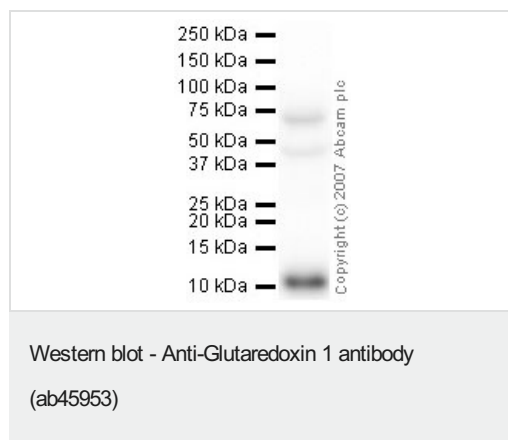
The Abpromise guarantee **Abpromise保証は、次のテスト済みアプリケーションにおけるab45953の使用に適用されます**
 アプリケーションノートには、推奨の開始希釈率がありますが、適切な希釈率につきましてはご検討ください。

アプリケーション	Abreviews	特記事項
IHC-P		Use a concentration of 1 µg/ml. Perform heat mediated antigen retrieval before commencing with IHC staining protocol.
IP		Use a concentration of 5 µg/ml.
ICC/IF		Use a concentration of 1 µg/ml.
WB	★★★★★ (2)	1/250. Detects a band of approximately 12 kDa (predicted molecular weight: 12 kDa).

ターゲット情報

機能	Has a glutathione-disulfide oxidoreductase activity in the presence of NADPH and glutathione reductase. Reduces low molecular weight disulfides and proteins.
配列類似性	Belongs to the glutaredoxin family. Contains 1 glutaredoxin domain.
細胞内局在	Cytoplasm.

画像



Anti-Glutaredoxin 1 antibody (ab45953) at 1/250 dilution + Jurkat (Human T cell lymphoblast-like cell line) Whole Cell Lysate at 10 µg

Secondary

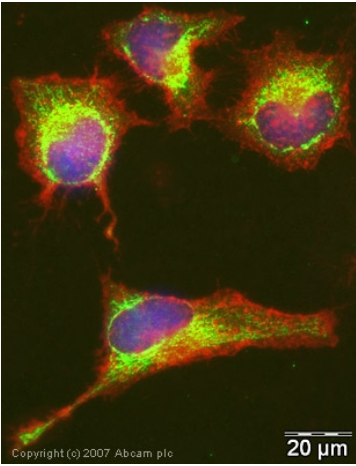
Goat polyclonal to Rabbit IgG - H&L - Pre-Adsorbed at 1/3000 dilution

Performed under reducing conditions.

Predicted band size: 12 kDa

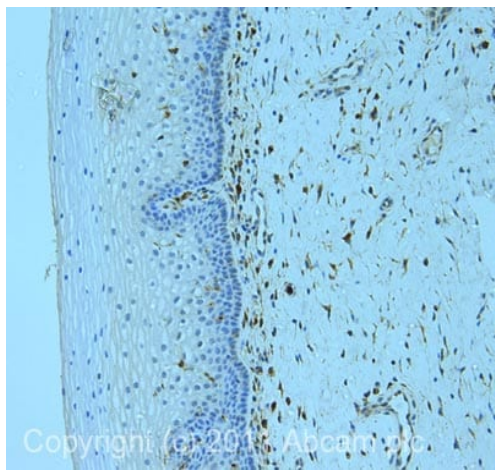
Observed band size: 12 kDa

Additional bands at: 45 kDa, 70 kDa. We are unsure as to the identity of these extra bands.



Immunocytochemistry/ Immunofluorescence - Anti-Glutaredoxin 1 antibody (ab45953)

ICC/IF image of ab45953 stained human HeLa cells. The cells were methanol fixed (5 min), permeabilised in TBS-T (20 min) and incubated with the antibody (ab45953, 1 μ g/ml) for 1h at room temperature. 1%BSA / 10% normal serum / 0.3M glycine was used to quench autofluorescence and block non-specific protein-protein interactions. The secondary antibody (green) was Alexa Fluor® 488 goat anti-rabbit IgG (H+L) used at a 1/1000 dilution for 1h. Alexa Fluor® 594 WGA was used to label plasma membranes (red). DAPI was used to stain the cell nuclei (blue).



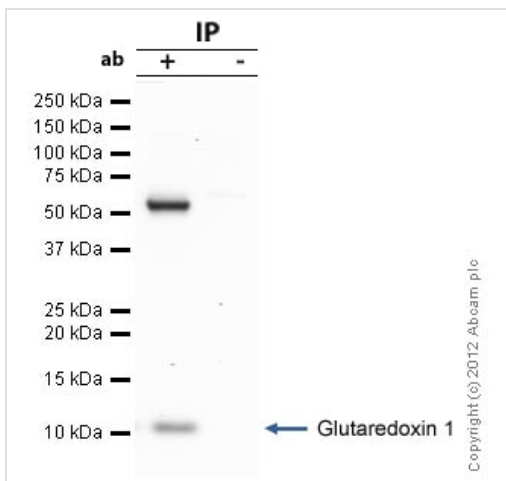
Immunohistochemistry (Formalin/PFA-fixed paraffin-embedded sections) - Anti-Glutaredoxin 1 antibody (ab45953)

IHC image of ab45953 staining in cervix formalin fixed paraffin embedded tissue section, performed on a Leica Bond™ system using the standard protocol F. The section was pre-treated using heat mediated antigen retrieval with sodium citrate buffer (pH6, epitope retrieval solution 1) for 20 mins. The section was then incubated with ab45953, 1 μ g/ml, for 15 mins at room temperature and detected using an HRP conjugated compact polymer system. DAB was used as the chromogen. The section was then counterstained with haematoxylin and mounted with DPX.

For other IHC staining systems (automated and non-automated) customers should optimize variable parameters such as antigen retrieval conditions, primary antibody concentration and antibody incubation times.



Western blot - Anti-Glutaredoxin 1 antibody
(ab45953)



Immunoprecipitation - Anti-Glutaredoxin 1 antibody
(ab45953)

Glutaredoxin 1 was immunoprecipitated using 0.5mg Jurkat whole cell extract, 5µg of Rabbit polyclonal to Glutaredoxin 1 and 50µl of protein G magnetic beads (+). No antibody was added to the control (-).

The antibody was incubated under agitation with Protein G beads for 10min, Jurkat whole cell extract lysate diluted in RIPA buffer was added to each sample and incubated for a further 10min under agitation.

Proteins were eluted by addition of 40µl SDS loading buffer and incubated for 10min at 70°C; 10µl of each sample was separated on a SDS PAGE gel, transferred to a nitrocellulose membrane, blocked with 5% BSA and probed with ab45953.

Secondary: Clean-Blot IP Detection Reagent (HRP) at 1/500 dilution.

Band: 12kDa; Glutaredoxin 1.

Please note: All products are "FOR RESEARCH USE ONLY. NOT FOR USE IN DIAGNOSTIC PROCEDURES"

Our Abpromise to you: Quality guaranteed and expert technical support

- Replacement or refund for products not performing as stated on the datasheet
- Valid for 12 months from date of delivery
- Response to your inquiry within 24 hours
- We provide support in Chinese, English, French, German, Japanese and Spanish
- Extensive multi-media technical resources to help you
- We investigate all quality concerns to ensure our products perform to the highest standards

If the product does not perform as described on this datasheet, we will offer a refund or replacement. For full details of the Abpromise, please visit <https://www.abcam.co.jp/abpromise> or contact our technical team.

Terms and conditions

- Guarantee only valid for products bought direct from Abcam or one of our authorized distributors