

Anti-Glutaminase antibody [EP7212] ab156876

KO 評価済 リコンビナント RabMAb

★★★★☆ 4 Abreviews 77 References 画像数 4

製品の概要

製品名	Anti-Glutaminase antibody [EP7212]
製品の詳細	Rabbit monoclonal [EP7212] to Glutaminase
由来種	Rabbit
アプリケーション	適用あり: WB 適用なし: Flow Cyt (Intra), ICC/IF or IHC-P
種交差性	交差種: Human
免疫原	Synthetic peptide. This information is proprietary to Abcam and/or its suppliers.
ポジティブ・コントロール	WB: Human kidney tissue lysates, HeLa and 293T cell lysates, wild type HAP1 cells.
特記事項	Our RabMAb [®] technology is a patented hybridoma-based technology for making rabbit monoclonal antibodies. For details on our patents, please refer to RabMAb[®] patents .

製品の特性

製品の状態	Liquid
保存方法	Shipped at 4°C. Store at +4°C short term (1-2 weeks). Upon delivery aliquot. Store at -20°C. Avoid freeze / thaw cycle.
バッファー	Preservative: 0.01% Sodium azide Constituents: 40% Glycerol, 0.05% BSA, 59% PBS
精製度	Protein A purified
ポリ/モノ	モノクローナル
クローン名	EP7212
アイソタイプ	IgG

アプリケーション

The Abpromise guarantee **Abpromise保証は、** 次のテスト済みアプリケーションにおけるab156876の使用に適用されます
アプリケーションノートには、推奨の開始希釈率がありますが、適切な希釈率につきましてはご検討ください。

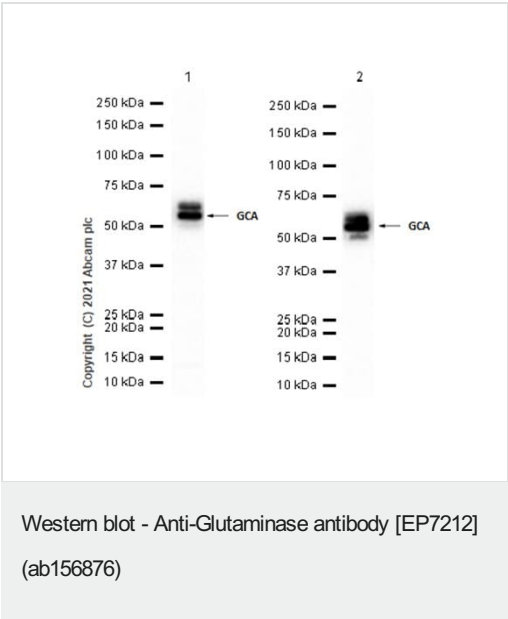
アプリケーション	Abreviews	特記事項
WB	★★★★★ (2)	1/1000 - 1/10000. Predicted molecular weight: 73 kDa.

追加情報Is unsuitable for Flow Cyt (Intra),ICC/IF or IHC-P.

ターゲット情報

機能	Catalyzes the first reaction in the primary pathway for the renal catabolism of glutamine.
組織特異性	KGA is expressed predominantly in brain and kidney but not in liver, isoform 3 is expressed principally in cardiac muscle and pancreas but not in liver or brain, and isoform 2 is expressed solely in cardiac and skeletal muscle.
配列類似性	Belongs to the glutaminase family. Contains 1 ANK repeat.
細胞内局在	Mitochondrion.

画像



All lanes : Anti-Glutaminase antibody [EP7212] (ab156876) at 1/1000 dilution

Lane 1 : HEK-293 (Human embryonic kidney epithelial cell) whole cell lysate

Lane 2 : HeLa (Human cervix adenocarcinoma epithelial cell) whole cell lysate

Lysates/proteins at 20 µg per lane.

Secondary

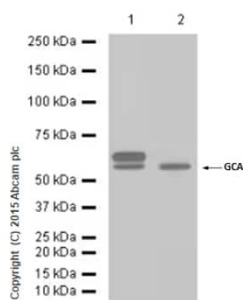
All lanes : Goat Anti-Rabbit IgG H&L (HRP) ([ab97051](#)) at 1/20000 dilution

Developed using the ECL technique.

Predicted band size: 73 kDa
Observed band size: 65 kDa

Exposure time: 1 second

Blocking and diluting buffer and concentration: 5% NFDM/TBST.



Western blot - Anti-Glutaminase antibody [EP7212]
(ab156876)

All lanes : Anti-Glutaminase antibody [EP7212] (ab156876) at 1/1000 dilution

Lane 1 : Human kidney tissue lysate

Lane 2 : HeLa (Human cervix adenocarcinoma epithelial cell) whole cell lysate

Lysates/proteins at 20 µg per lane.

Secondary

All lanes : Goat Anti-Rabbit IgG H&L (HRP) ([ab97051](#)) at 1/20000 dilution

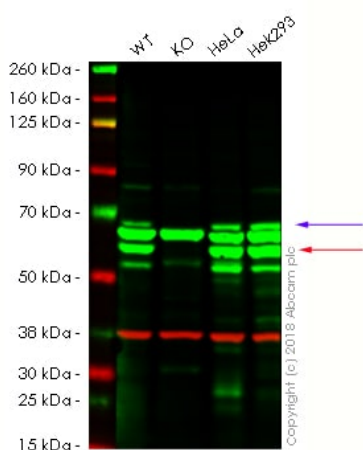
Developed using the ECL technique.

Predicted band size: 73 kDa

Observed band size: 65 kDa

Exposure time: 1 second

Blocking and diluting buffer and concentration: 5% NFDM/TBST.



Western blot - Anti-Glutaminase antibody [EP7212]
(ab156876)

Lane 1: Wild type HAP1 whole cell lysate (20 µg) **Lane 2:** GLS knockout HAP1 whole cell lysate (20 µg) **Lane 3:** HeLa whole cell lysate (20 µg) **Lane 4:** HEK293 whole cell lysate (20 µg) **Lanes 1 - 4:** Merged signal (red and green). Green - ab156876 observed at 62 kDa. Red - loading control, [ab8245](#), observed at 37 kDa.

ab156876 was shown to recognize GLS in wild-type HAP1 cells as signal was lost at the expected MW in HAP1 knockout cells. Additional cross-reactive bands were observed in the wild-type and knockout cells. Wild-type and GLS knockout samples were subjected to SDS-PAGE. Ab156876 and [ab8245](#) (Mouse anti GAPDH loading control) were incubated overnight at 4°C at 1/1000 dilution and 1/10,000 dilution respectively. Blots were developed with Goat anti-Rabbit IgG H&L (IRDye® 800CW) preabsorbed ([ab216773](#)) and Goat anti-Mouse IgG H&L (IRDye® 680RD) preabsorbed ([ab216776](#)) secondary antibodies at 1/10,000 dilution for 1hr at room temperature before imaging.

Blue arrow corresponds to isoform 1 KGA.

Red arrow corresponds to isoform 3 GAC.

Why choose a recombinant antibody?



Research with confidence
Consistent and reproducible results



Long-term and scalable supply
Recombinant technology



Success from the first experiment
Confirmed specificity



Ethical standards compliant
Animal-free production

Anti-Glutaminase antibody [EP7212] (ab156876)

Please note: All products are "FOR RESEARCH USE ONLY. NOT FOR USE IN DIAGNOSTIC PROCEDURES"

Our Abpromise to you: Quality guaranteed and expert technical support

- Replacement or refund for products not performing as stated on the datasheet
- Valid for 12 months from date of delivery
- Response to your inquiry within 24 hours
- We provide support in Chinese, English, French, German, Japanese and Spanish
- Extensive multi-media technical resources to help you
- We investigate all quality concerns to ensure our products perform to the highest standards

If the product does not perform as described on this datasheet, we will offer a refund or replacement. For full details of the Abpromise, please visit <https://www.abcam.co.jp/abpromise> or contact our technical team.

Terms and conditions

- Guarantee only valid for products bought direct from Abcam or one of our authorized distributors