

Anti-Glucose Transporter GLUT4 (phospho S488) antibody [EPR930(2)] ab188317

リコンビナント **RabMAb**

★★★★★ **3 Abreviews** **6 References** 画像数 6

製品の概要

製品名	Anti-Glucose Transporter GLUT4 (phospho S488) antibody [EPR930(2)]
製品の詳細	Rabbit monoclonal [EPR930(2)] to Glucose Transporter GLUT4 (phospho S488)
由来種	Rabbit
アプリケーション	適用あり: WB, Dot blot
種交差性	交差種: Mouse, Rat, Human
免疫原	Synthetic peptide. This information is proprietary to Abcam and/or its suppliers.
ポジティブ・コントロール	WB: Human fetal heart, mouse heart, rat heart
特記事項	<p>This product is a recombinant monoclonal antibody, which offers several advantages including:</p> <ul style="list-style-type: none"> - High batch-to-batch consistency and reproducibility - Improved sensitivity and specificity - Long-term security of supply - Animal-free production <p>For more information see here.</p> <p>Our RabMAb[®] technology is a patented hybridoma-based technology for making rabbit monoclonal antibodies. For details on our patents, please refer to RabMAb[®] patents.</p>

製品の特性

製品の状態	Liquid
保存方法	Shipped at 4°C. Store at +4°C short term (1-2 weeks). Upon delivery aliquot. Store at -20°C long term. Avoid freeze / thaw cycle.
バッファー	<p>pH: 7.2</p> <p>Preservative: 0.01% Sodium azide</p> <p>Constituents: 59% PBS, 40% Glycerol (glycerin, glycerine), 0.05% BSA</p>
精製度	Protein A purified
ポリ/モノ	モノクローナル
クローン名	EPR930(2)
アイソタイプ	IgG

アプリケーション

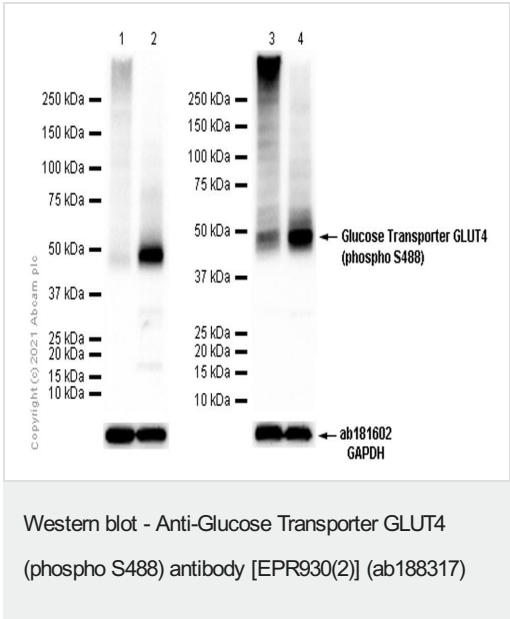
The Abpromise guarantee Abpromise保証は、次のテスト済みアプリケーションにおけるab188317の使用に適用されます
アプリケーションノートには、推奨の開始希釈率がありますが、適切な希釈率につきましてはご確認ください。

アプリケーション	Abreviews	特記事項
WB	★★★★★ (2)	1/1000 - 1/10000. Detects a band of approximately 45 kDa (predicted molecular weight: 55 kDa). We recommend not to boil the samples before loading to get desirable WB results.
Dot blot		Use at an assay dependent concentration.

ターゲット情報

機能	Insulin-regulated facilitative glucose transporter.
組織特異性	Skeletal and cardiac muscles; brown and white fat.
関連疾患	Diabetes mellitus, non-insulin-dependent
配列類似性	Belongs to the major facilitator superfamily. Sugar transporter (TC 2.A.1.1) family. Glucose transporter subfamily.
翻訳後修飾	Sumoylated.
細胞内局在	Cell membrane. Endomembrane system. Cytoplasm, perinuclear region. Localizes primarily to the perinuclear region, undergoing continued recycling to the plasma membrane where it is rapidly reinternalized. The dileucine internalization motif is critical for intracellular sequestration.

画像



All lanes : Anti-Glucose Transporter GLUT4 (phospho S488) antibody [EPR930(2)] (ab188317) at 1/1000 dilution

- Lane 1** : Human heart lysate, boiled
- Lane 2** : Human heart lysate, unboiled
- Lane 3** : Mouse heart lysate, boiled
- Lane 4** : Mouse heart lysate, unboiled

Lysates/proteins at 20 µg per lane.

Secondary

All lanes : Goat Anti-Rabbit IgG (HRP) with minimal cross-reactivity with human IgG at 1/2000 dilution

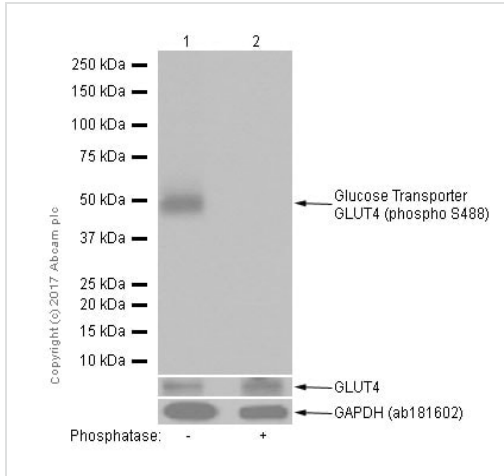
Predicted band size: 55 kDa

Observed band size: 45 kDa

Lanes 1 and 2: 7 seconds exposure

Lanes 3 and 4: 20 seconds exposure

Blocking and diluting buffer: 5% NFDM/TBST



Western blot - Anti-Glucose Transporter GLUT4 (phospho S488) antibody [EPR930(2)] (ab188317)

All lanes : Anti-Glucose Transporter GLUT4 (phospho S488) antibody [EPR930(2)] (ab188317) at 1/1000 dilution

Lane 1 : Human fetal heart whole cell lysate

Lane 2 : Human fetal heart whole cell lysate with Phosphatase

Lysates/proteins at 15 µg per lane.

Secondary

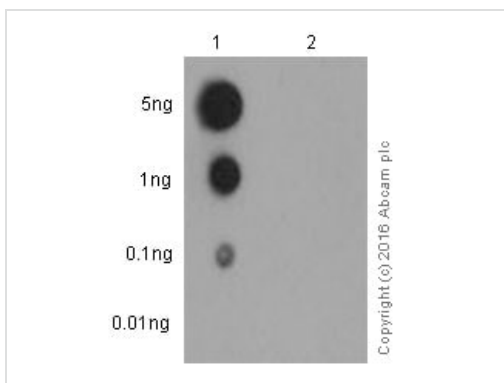
All lanes : Goat Anti-Rabbit IgG, Peroxidase conjugated (DC03L) at 1/20000 dilution

Predicted band size: 55 kDa

Observed band size: 45 kDa

Exposure time: 1 second

Blocking/Diluting buffer and concentration 5% NFDM/TBST

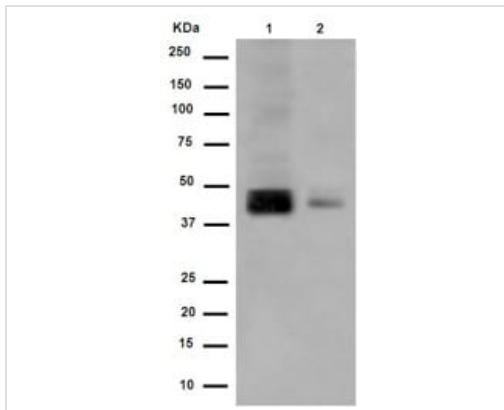


Dot Blot - Anti-Glucose Transporter GLUT4 (phospho S488) antibody [EPR930(2)] (ab188317)

Dot Blot analysis of Lane 1: Glucose Transporter GLUT4 (pS488) phospho peptide and Lane 2: Glucose Transporter GLUT4 non-phospho peptide labeling Glucose Transporter GLUT4 (phospho S488) with ab188317 at 1/1000 dilution.

5% NFDM/TBST was used as the diluting and blocking buffer.

ab97051 Goat Anti-Rabbit IgG, (H+L), Peroxidase conjugated was used as the secondary antibody at 1/100000 dilution. Exposure time: 3 minutes.



Western blot - Anti-Glucose Transporter GLUT4 (phospho S488) antibody [EPR930(2)] (ab188317)

All lanes : Anti-Glucose Transporter GLUT4 (phospho S488) antibody [EPR930(2)] (ab188317) at 1/5000 dilution

Lane 1 : Mouse heart tissue lysate

Lane 2 : Rat heart tissue lysate

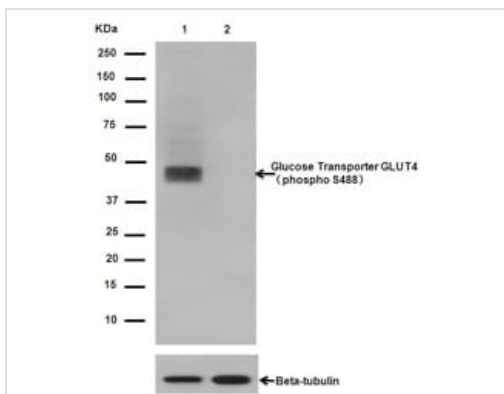
Lysates/proteins at 10 µg per lane.

Secondary

All lanes : Goat Anti-Rabbit IgG, (H+L), Peroxidase conjugated at 1/1000 dilution

Predicted band size: 55 kDa

Observed band size: 45 kDa



Western blot - Anti-Glucose Transporter GLUT4 (phospho S488) antibody [EPR930(2)] (ab188317)

All lanes : Anti-Glucose Transporter GLUT4 (phospho S488) antibody [EPR930(2)] (ab188317) at 1/20000 dilution

Lane 1 : Untreated human fetal heart

Lane 2 : Lambda phosphorylase treated human fetal heart

Lysates/proteins at 10 µg per lane.

Secondary

All lanes : Anti-Rabbit IgG (HRP), specific to the non-reduced form of IgG at 1/1000 dilution

Predicted band size: 55 kDa

Observed band size: 45 kDa

Why choose a recombinant antibody?



Research with confidence
Consistent and reproducible results



Long-term and scalable supply
Recombinant technology



Success from the first experiment
Confirmed specificity



Ethical standards compliant
Animal-free production

Anti-Glucose Transporter GLUT4 (phospho S488)
antibody [EPR930(2)] (ab188317)

Please note: All products are "FOR RESEARCH USE ONLY. NOT FOR USE IN DIAGNOSTIC PROCEDURES"

Our Abpromise to you: Quality guaranteed and expert technical support

- Replacement or refund for products not performing as stated on the datasheet
- Valid for 12 months from date of delivery
- Response to your inquiry within 24 hours
- We provide support in Chinese, English, French, German, Japanese and Spanish
- Extensive multi-media technical resources to help you
- We investigate all quality concerns to ensure our products perform to the highest standards

If the product does not perform as described on this datasheet, we will offer a refund or replacement. For full details of the Abpromise, please visit <https://www.abcam.co.jp/abpromise> or contact our technical team.

Terms and conditions

- Guarantee only valid for products bought direct from Abcam or one of our authorized distributors