

Anti-Glucose Transporter GLUT4 antibody [1F8] ab35826

12 References [画像数 1](#)

製品の概要

製品名	Anti-Glucose Transporter GLUT4 antibody [1F8]
製品の詳細	Mouse monoclonal [1F8] to Glucose Transporter GLUT4
由来種	Mouse
アプリケーション	適用あり: WB
種交差性	交差種: Mouse
免疫原	Tissue, cells or virus corresponding to Rat Glucose Transporter GLUT4. Partially purified vesicles containing insulin-responsive glucose transporter 4.
エピトープ	This antibody has been shown to recognise an epitope in the cytoplasmic portion of the molecule.
特記事項	<p>The Life Science industry has been in the grips of a reproducibility crisis for a number of years. Abcam is leading the way in addressing this with our range of recombinant monoclonal antibodies and knockout edited cell lines for gold-standard validation. Please check that this product meets your needs before purchasing.</p> <p>If you have any questions, special requirements or concerns, please send us an inquiry and/or contact our Support team ahead of purchase. Recommended alternatives for this product can be found below, along with publications, customer reviews and Q&As</p>

製品の特性

製品の状態	Liquid
保存方法	Shipped at 4°C. Upon delivery aliquot and store at -20°C. Avoid freeze / thaw cycles.
バッファー	<p>pH: 7.20</p> <p>Preservative: 0.09% Sodium azide</p> <p>Constituent: PBS</p>
精製度	Protein G purified
ポリ/モノ	モノクローナル
クローン名	1F8
アイソタイプ	IgG1

アプリケーション

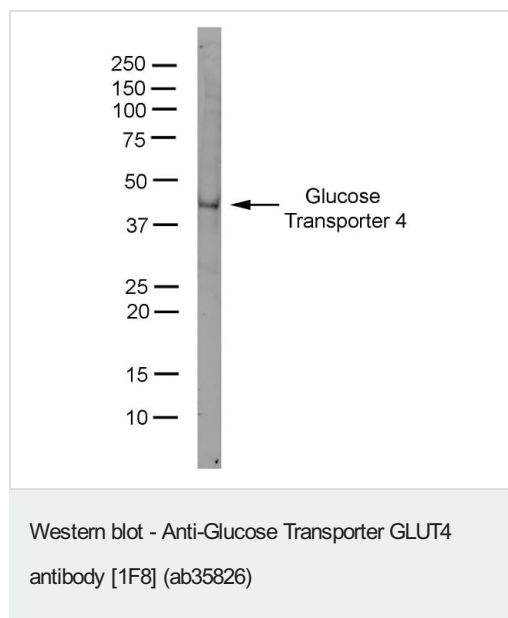
The Abpromise guarantee Abpromise保証は、 次のテスト済みアプリケーションにおけるab35826の使用に適用されます
アプリケーションノートには、推奨の開始希釈率がありますが、適切な希釈率につきましてはご確認ください。

アプリケーション	Abreviews	特記事項
WB		Use at an assay dependent concentration. Predicted molecular weight: 56 kDa. 5 µg/ml of antibody will detect Glucose Transporter protein contained in 50-200 µg of solubilised membrane.

ターゲット情報

機能	Insulin-regulated facilitative glucose transporter.
組織特異性	Skeletal and cardiac muscles; brown and white fat.
関連疾患	Diabetes mellitus, non-insulin-dependent
配列類似性	Belongs to the major facilitator superfamily. Sugar transporter (TC 2.A.1.1) family. Glucose transporter subfamily.
翻訳後修飾	Sumoylated.
細胞内局在	Cell membrane. Endomembrane system. Cytoplasm, perinuclear region. Localizes primarily to the perinuclear region, undergoing continued recycling to the plasma membrane where it is rapidly reinternalized. The dileucine internalization motif is critical for intracellular sequestration.

画像



3T3-L1 lysate probed with Mouse anti Rat GLUT4 (ab35826) followed by Goat anti Mouse IgG:Dylight®800. Imaged using the LiCor Odyssey®

Please note: All products are "FOR RESEARCH USE ONLY. NOT FOR USE IN DIAGNOSTIC PROCEDURES"

Our Abpromise to you: Quality guaranteed and expert technical support

- Replacement or refund for products not performing as stated on the datasheet
- Valid for 12 months from date of delivery
- Response to your inquiry within 24 hours
- We provide support in Chinese, English, French, German, Japanese and Spanish
- Extensive multi-media technical resources to help you
- We investigate all quality concerns to ensure our products perform to the highest standards

If the product does not perform as described on this datasheet, we will offer a refund or replacement. For full details of the Abpromise, please visit <https://www.abcam.co.jp/abpromise> or contact our technical team.

Terms and conditions

- Guarantee only valid for products bought direct from Abcam or one of our authorized distributors