

# Anti-Glucose Transporter GLUT3 antibody ab41525

★★★★☆ **9 Abreviews**   **57 References**   画像数 **2**

### 製品の概要

製品名	Anti-Glucose Transporter GLUT3 antibody
製品の詳細	Rabbit polyclonal to Glucose Transporter GLUT3
由来種	Rabbit
アプリケーション	<b>適用あり:</b> WB, IHC-P
種交差性	<b>交差種:</b> Human
免疫原	Synthetic peptide within Mouse Glucose Transporter GLUT3 (C terminal). The exact immunogen sequence used to generate this antibody is proprietary information. If additional detail on the immunogen is needed to determine the suitability of the antibody for your needs, please <b><u>contact</u></b> our Scientific Support team to discuss your requirements. Database link: <b><u>P32037</u></b>

### 特記事項

The Life Science industry has been in the grips of a reproducibility crisis for a number of years. Abcam is leading the way in addressing this with our range of recombinant monoclonal antibodies and knockout edited cell lines for gold-standard validation. Please check that this product meets your needs before purchasing.

If you have any questions, special requirements or concerns, please send us an inquiry and/or contact our Support team ahead of purchase. Recommended alternatives for this product can be found below, along with publications, customer reviews and Q&As

### 製品の特性

製品の状態	Liquid
保存方法	Shipped at 4°C. Upon delivery aliquot and store at -20°C or -80°C. Avoid repeated freeze / thaw cycles.
バッファー	Preservative: 0.02% Sodium azide  Antibody stabilization buffer.
精製度	Immunogen affinity purified
特記事項 (精製)	Antigen-sepharose affinity column.
ポリ/モノ	ポリクローナル
アイソタイプ	IgG

## アプリケーション

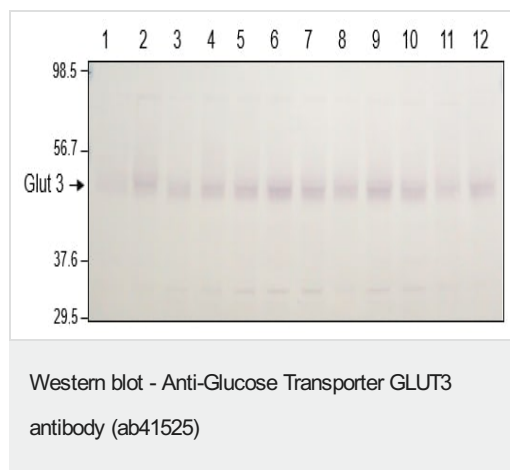
**The Abpromise guarantee** **Abpromise保証は、次のテスト済みアプリケーションにおけるab41525の使用に適用されます**  
アプリケーションノートには、推奨の開始希釈率がありますが、適切な希釈率につきましてはご確認ください。

アプリケーション	Abreviews	特記事項
WB	★★★★★ (5)	1/8000. Detects a band of approximately 45-47 kDa. Detects a band of approximately 45-47 kDa using 10ug hippocampal plasma membranes as antigen. The samples MUST NOT be boiled before running the gel as highly hydrophobic membrane proteins, like glucose transporters, aggregate severely at high temperatures due to the hydrophobic effect, which increases as a direct function of temperature. If the samples are boiled, much of
IHC-P		Use a concentration of 4 µg/ml.

## ターゲット情報

機能	Facilitative glucose transporter. Probably a neuronal glucose transporter.
組織特異性	Highly expressed in brain. Expressed in many tissues.
配列類似性	Belongs to the major facilitator superfamily. Sugar transporter (TC 2.A.1.1) family. Glucose transporter subfamily.
細胞内局在	Membrane.

## 画像



**All lanes** : Anti-Glucose Transporter GLUT3 antibody (ab41525) at 1/2000 dilution

**Lanes 1 & 4 & 7 & 10** : Sal 3 month cortical extract

**Lanes 2 & 5 & 8 & 11** : Glu 3 month cortical extract

**Lanes 3 & 9 & 12** : CB 3 month cortical extract

**Lane 6** : GB 3 month cortical extract

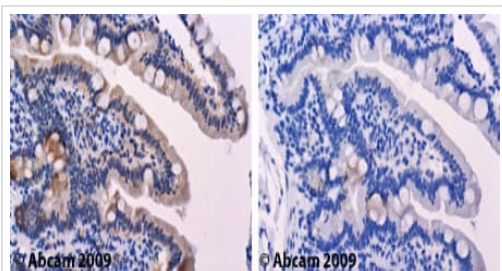
Lysates/proteins at 10 µg per lane.

### Secondary

**All lanes** : Alkaline phosphatase-conjugated goat anti-rabbit IgG at 1/5000 dilution

10% SDS-PAGE gel.

Incubated with the primary antibody for 2 hours at room temperature followed by 3x10 minutes washes in TBST.



Immunohistochemistry (Formalin/PFA-fixed paraffin-embedded sections) - Anti-Glucose Transporter GLUT3 antibody (ab41525)

ab41525 staining GLUT3 in human duodenum.

Left panel: with primary antibody at 4 ug/ml. Right panel: isotype control.

Sections were stained using an automated system (DAKO Autostainer Plus), at room temperature: sections were rehydrated and antigen retrieved with the Dako 3 in 1 AR buffers EDTA pH 9.0. Slides were peroxidase blocked in 3% H<sub>2</sub>O<sub>2</sub> in methanol for 10 mins. They were then blocked with Dako Protein block for 10 minutes (containing casein 0.25% in PBS) then incubated with primary antibody for 20 min and detected with Dako envision flex amplification kit for 30 minutes. Colorimetric detection was completed with Diaminobenzidine for 5 minutes. Slides were counterstained with Haematoxylin and coverslipped under DePeX. Please note that for manual staining we recommend to optimize the primary antibody concentration and incubation time (overnight incubation), and amplification may be required.

**Please note:** All products are "FOR RESEARCH USE ONLY. NOT FOR USE IN DIAGNOSTIC PROCEDURES"

### Our Abpromise to you: Quality guaranteed and expert technical support

- Replacement or refund for products not performing as stated on the datasheet
- Valid for 12 months from date of delivery
- Response to your inquiry within 24 hours
- We provide support in Chinese, English, French, German, Japanese and Spanish
- Extensive multi-media technical resources to help you
- We investigate all quality concerns to ensure our products perform to the highest standards

If the product does not perform as described on this datasheet, we will offer a refund or replacement. For full details of the Abpromise, please visit <https://www.abcam.co.jp/abpromise> or contact our technical team.

### Terms and conditions

- Guarantee only valid for products bought direct from Abcam or one of our authorized distributors