


# Anti-Glucose Transporter GLUT1 antibody ab15309

★★★★★ [15 Abreviews](#) [153 References](#) [画像数 4](#)

### 製品の概要

製品名	Anti-Glucose Transporter GLUT1 antibody
製品の詳細	Rabbit polyclonal to Glucose Transporter GLUT1
由来種	Rabbit
アプリケーション	<b>適用あり:</b> ICC/IF, IHC-P
種交差性	<b>交差種:</b> Human <b>交差が予測される動物種:</b> Rat 
免疫原	Synthetic peptide within Human Glucose Transporter GLUT1 aa 450 to the C-terminus (C terminal). The exact sequence is proprietary. Database link: <a href="#">P11166</a>
特記事項	<p><b>This product is FOR RESEARCH USE ONLY. For commercial use, please contact <a href="mailto:partnerships@abcam.com">partnerships@abcam.com</a>.</b></p> <p>The Life Science industry has been in the grips of a reproducibility crisis for a number of years. Abcam is leading the way in addressing this with our range of recombinant monoclonal antibodies and knockout edited cell lines for gold-standard validation. Please check that this product meets your needs before purchasing.</p> <p>If you have any questions, special requirements or concerns, please send us an inquiry and/or contact our Support team ahead of purchase. Recommended alternatives for this product can be found below, along with publications, customer reviews and Q&amp;As</p>

### 製品の特性

製品の状態	Liquid
保存方法	Shipped at 4°C. Upon delivery aliquot and store at -20°C. Avoid freeze / thaw cycles.
バッファー	pH: 7.40 Preservative: 0.1% Sodium azide Constituents: PBS, 1% BSA
精製度	Immunogen affinity purified
ポリ/モノ	ポリクローナル
アイソタイプ	IgG

## アプリケーション

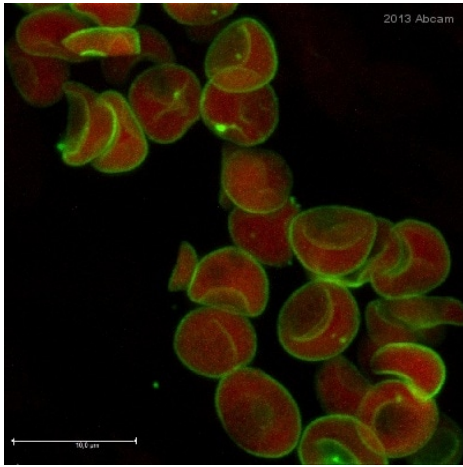
The Abpromise guarantee Abpromise保証は、次のテスト済みアプリケーションにおけるab15309の使用に適用されます  
アプリケーションノートには、推奨の開始希釈率がありますが、適切な希釈率につきましてはご検討ください。

アプリケーション	Abreviews	特記事項
ICC/IF	★★★★★ (2)	Use at an assay dependent concentration. See Abreview.
IHC-P	★★★★★ (5)	1/200.

## ターゲット情報

機能	Facilitative glucose transporter. This isoform may be responsible for constitutive or basal glucose uptake. Has a very broad substrate specificity; can transport a wide range of aldoses including both pentoses and hexoses.
組織特異性	Expressed at variable levels in many human tissues.
関連疾患	Defects in SLC2A1 are the cause of glucose transporter type 1 deficiency syndrome (GLUT1DS) [MIM:606777]; also known as blood-brain barrier glucose transport defect. This disease causes a defect in glucose transport across the blood-brain barrier. It is characterized by infantile seizures, delayed development, and acquired microcephaly. Defects in SLC2A1 are the cause of dystonia type 18 (DYT18) [MIM:612126]. DYT18 is an exercise-induced paroxysmal dystonia/dyskinesia. Dystonia is defined by the presence of sustained involuntary muscle contraction, often leading to abnormal postures. DYT18 is characterized by attacks of involuntary movements triggered by certain stimuli such as sudden movement or prolonged exercise. In some patients involuntary exertion-induced dystonic, choreoathetotic, and ballistic movements may be associated with macrocytic hemolytic anemia.
配列類似性	Belongs to the major facilitator superfamily. Sugar transporter (TC 2.A.1.1) family. Glucose transporter subfamily.
翻訳後修飾	Phosphorylated upon DNA damage, probably by ATM or ATR.
細胞内局在	Cell membrane. Melanosome. Localizes primarily at the cell surface (By similarity). Identified by mass spectrometry in melanosome fractions from stage I to stage IV.

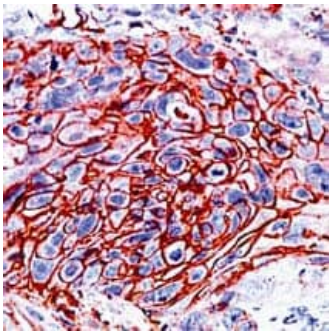
## 画像



Immunohistochemistry (Formalin/PFA-fixed paraffin-embedded sections) - Anti-Glucose Transporter GLUT1 antibody (ab15309)

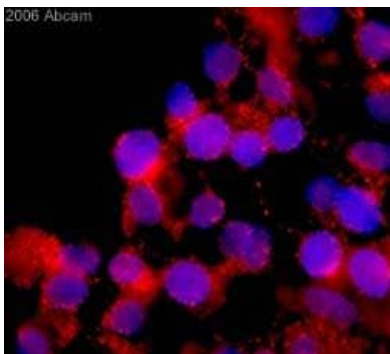
This image is courtesy of an Abreview submitted by Heiko Locher

ab15309 staining Glucose Transporter GLUT1 (green) in Human red blood cells tissue sections by Immunohistochemistry (IHC-P - paraformaldehyde-fixed, paraffin-embedded sections). Tissue was fixed with formaldehyde and blocked with 1% BSA for 30 minutes at room temperature; antigen retrieval was by heat mediation in a citrate buffer, pH 6.0. Samples were incubated with primary antibody (1/500 in PBS-T + 1% PBS) for 12 hours. An Alexa Fluor® 488-conjugated Donkey anti-rabbit IgG polyclonal (1/500) was used as the secondary antibody. Red - autofluorescence of erythrocytes.



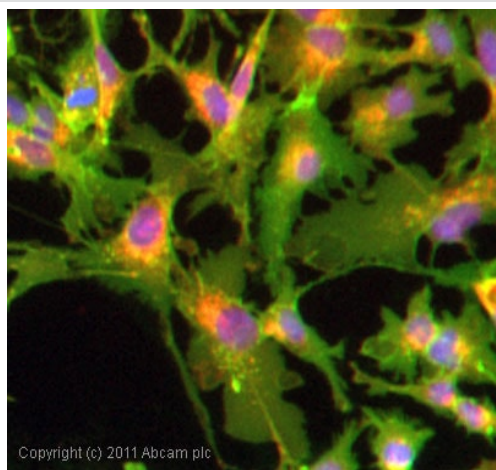
Immunohistochemistry (Formalin/PFA-fixed paraffin-embedded sections) - Anti-Glucose Transporter GLUT1 antibody (ab15309)

ab15309 staining Glucose Transporter GLUT1 in human esophagus by Immunohistochemistry (FFPE-sections).



Immunocytochemistry/ Immunofluorescence - Anti-Glucose Transporter GLUT1 antibody (ab15309)

ab15309 at a 1/100 dilution staining rat cells (neural stem cells from adult subventricular zone) by Immunocytochemistry/Immunofluorescence. The cells were incubated with the antibody for 18 hours and then bound antibody was detected using a Cy3 conjugated Goat anti-rabbit IgG (H + L). This image is courtesy of an Abreview submitted by **Martin Maurer**.



Immunocytochemistry/ Immunofluorescence - Anti-Glucose Transporter GLUT1 antibody (ab15309)

ICC/IF image of ab15309 stained HepG2 cells. The cells were 100% methanol fixed (5 min) and then incubated in 1%BSA / 10% normal goat serum / 0.3M glycine in 0.1% PBS-Tween for 1h to permeabilise the cells and block non-specific protein-protein interactions. The cells were then incubated with the antibody (ab15309, 1µg/ml) overnight at +4°C. The secondary antibody (green) was DyLight® 488 goat anti-rabbit IgG - H&L, pre-adsorbed (**ab96899**) used at a 1/250 dilution for 1h. Alexa Fluor® 594 WGA was used to label plasma membranes (red) at a 1/200 dilution for 1h. DAPI was used to stain the cell nuclei (blue) at a concentration of 1.43µM.

**Please note:** All products are "FOR RESEARCH USE ONLY. NOT FOR USE IN DIAGNOSTIC PROCEDURES"

### Our Abpromise to you: Quality guaranteed and expert technical support

- Replacement or refund for products not performing as stated on the datasheet
- Valid for 12 months from date of delivery
- Response to your inquiry within 24 hours
- We provide support in Chinese, English, French, German, Japanese and Spanish
- Extensive multi-media technical resources to help you
- We investigate all quality concerns to ensure our products perform to the highest standards

If the product does not perform as described on this datasheet, we will offer a refund or replacement. For full details of the Abpromise, please visit <https://www.abcam.co.jp/abpromise> or contact our technical team.

### Terms and conditions

- Guarantee only valid for products bought direct from Abcam or one of our authorized distributors