


Anti-Glucose 6 Phosphate Dehydrogenase antibody [EPR6291] - BSA and Azide free ab247989

リコンビナント RabMAb

画像数 3

製品の概要

製品名	Anti-Glucose 6 Phosphate Dehydrogenase antibody [EPR6291] - BSA and Azide free
製品の詳細	Rabbit monoclonal [EPR6291] to Glucose 6 Phosphate Dehydrogenase - BSA and Azide free
由来種	Rabbit
アプリケーション	適用あり: WB, Flow Cyt (Intra) 適用なし: ICC/IF, IHC-P or IP
種交差性	交差種: Human 交差が予測される動物種: Mouse 
免疫原	Synthetic peptide. This information is proprietary to Abcam and/or its suppliers.
特記事項	<p>ab247989 is the carrier-free version of ab124738.</p> <p>Our carrier-free antibodies are typically supplied in a PBS-only formulation, purified and free of BSA, sodium azide and glycerol. The carrier-free buffer and high concentration allow for increased conjugation efficiency.</p> <p>This conjugation-ready format is designed for use with fluorochromes, metal isotopes, oligonucleotides, and enzymes, which makes them ideal for antibody labelling, functional and cell-based assays, flow-based assays (e.g. mass cytometry) and Multiplex Imaging applications.</p> <p>Use our conjugation kits for antibody conjugates that are ready-to-use in as little as 20 minutes with <1 minute hands-on-time and 100% antibody recovery: available for fluorescent dyes, HRP, biotin and gold.</p> <p>This product is compatible with the Maxpar[®] Antibody Labeling Kit from Fluidigm, without the need for antibody preparation. Maxpar[®] is a trademark of Fluidigm Canada Inc.</p> <p>This product is a recombinant monoclonal antibody, which offers several advantages including:</p> <ul style="list-style-type: none">- High batch-to-batch consistency and reproducibility- Improved sensitivity and specificity- Long-term security of supply- Animal-free production <p>For more information see here.</p> <p>Our RabMAb[®] technology is a patented hybridoma-based technology for making rabbit monoclonal antibodies. For details on our patents, please refer to RabMAb[®] patents.</p>

Rat: We have preliminary internal testing data to indicate this antibody may not react with this species. Please contact us for more information.

製品の特性

製品の状態	Liquid
保存方法	Shipped at 4°C. Store at +4°C. Do Not Freeze.
バッファー	pH: 7.2 Constituent: PBS
キャリア・フリー	はい
精製度	Protein A purified
ポリ/モノ	モノクローナル
クローン名	EPR6291
アイソタイプ	IgG

アプリケーション

The Abpromise guarantee **Abpromise保証は、次のテスト済みアプリケーションにおけるab247989の使用に適用されます**
アプリケーションノートには、推奨の開始希釈率がありますが、適切な希釈率につきましてはご検討ください。

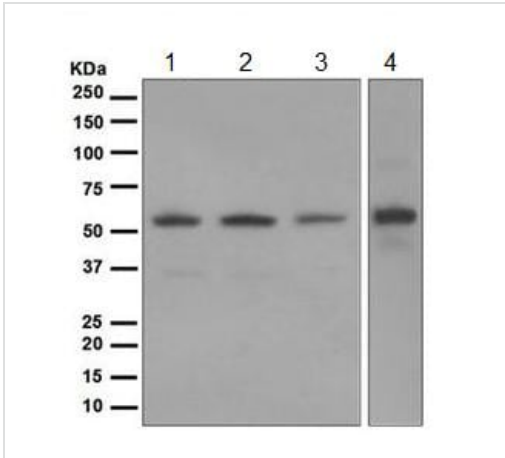
アプリケーション	Abreviews	特記事項
WB		Use at an assay dependent concentration. Detects a band of approximately 59 kDa (predicted molecular weight: 59 kDa).
Flow Cyt (Intra)		Use at an assay dependent concentration.

追加情報 Is unsuitable for ICC/IF, IHC-P or IP.

ターゲット情報

機能	Catalyzes the rate-limiting step of the oxidative pentose-phosphate pathway, which represents a route for the dissimilation of carbohydrates besides glycolysis. The main function of this enzyme is to provide reducing power (NADPH) and pentose phosphates for fatty acid and nucleic acid synthesis.
組織特異性	Isoform Long is found in lymphoblasts, granulocytes and sperm.
パスウェイ	Carbohydrate degradation; pentose phosphate pathway; D-ribulose 5-phosphate from D-glucose 6-phosphate (oxidative stage): step 1/3.
関連疾患	Anemia, non-spherocytic hemolytic, due to G6PD deficiency
配列類似性	Belongs to the glucose-6-phosphate dehydrogenase family.
翻訳後修飾	Acetylated by ELP3 at Lys-403; acetylation inhibits its homodimerization and enzyme activity. Deacetylated by SIRT2 at Lys-403; deacetylation stimulates its enzyme activity.

画像



Western blot - Anti-Glucose 6 Phosphate Dehydrogenase antibody [EPR6291] - BSA and Azide free (ab247989)

All lanes : Anti-Glucose 6 Phosphate Dehydrogenase antibody [EPR6291] (**ab124738**) at 1/10000 dilution

Lane 1 : 293T cell lysate

Lane 2 : MOLT4 cell lysate

Lane 3 : HUVEC cell lysate

Lane 4 : HeLa cell lysate

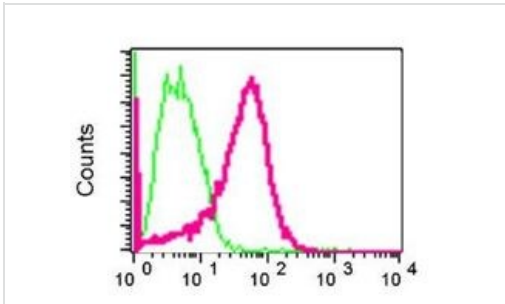
Lysates/proteins at 10 µg per lane.

Secondary

All lanes : Goat anti-Rabbit HRP at 1/2000 dilution

Predicted band size: 59 kDa

This data was developed using **ab124738**, the same antibody clone in a different buffer formulation.



Flow Cytometry (Intracellular) - Anti-Glucose 6 Phosphate Dehydrogenase antibody [EPR6291] - BSA and Azide free (ab247989)

This data was developed using **ab124738**, the same antibody clone in a different buffer formulation.

ab124738 at 1/10 dilution staining Glucose 6 Phosphate Dehydrogenase in permeabilized HeLa cells (red) or a rabbit IgG (negative) (green).

Why choose a recombinant antibody?



Research with confidence
Consistent and reproducible results



Long-term and scalable supply
Recombinant technology



Success from the first experiment
Confirmed specificity



Ethical standards compliant
Animal-free production

Anti-Glucose 6 Phosphate Dehydrogenase antibody
[EPR6291] - BSA and Azide free (ab247989)

Please note: All products are "FOR RESEARCH USE ONLY. NOT FOR USE IN DIAGNOSTIC PROCEDURES"

Our Abpromise to you: Quality guaranteed and expert technical support

- Replacement or refund for products not performing as stated on the datasheet
- Valid for 12 months from date of delivery
- Response to your inquiry within 24 hours
- We provide support in Chinese, English, French, German, Japanese and Spanish
- Extensive multi-media technical resources to help you
- We investigate all quality concerns to ensure our products perform to the highest standards

If the product does not perform as described on this datasheet, we will offer a refund or replacement. For full details of the Abpromise, please visit <https://www.abcam.co.jp/abpromise> or contact our technical team.

Terms and conditions

- Guarantee only valid for products bought direct from Abcam or one of our authorized distributors