


Anti-Glucose 6 Phosphate Dehydrogenase antibody [EPR6291] ab124738

リコンビナント **RabMAb**

1 References [画像数 3](#)

製品の概要

製品名	Anti-Glucose 6 Phosphate Dehydrogenase antibody [EPR6291]
製品の詳細	Rabbit monoclonal [EPR6291] to Glucose 6 Phosphate Dehydrogenase
由来種	Rabbit
アプリケーション	適用あり: WB, Flow Cyt (Intra) 適用なし: ICC/IF, IHC-P or IP
種交差性	交差種: Human 交差が予測される動物種: Mouse 
免疫原	Synthetic peptide within Human Glucose 6 Phosphate Dehydrogenase aa 100-200. The exact sequence is proprietary.
ポジティブ・コントロール	293T, MOLT4, HUVEC and HeLa whole cell lysate (ab150035); Permeabilized HeLa cells.
特記事項	<p>This product is a recombinant monoclonal antibody, which offers several advantages including:</p> <ul style="list-style-type: none"> - High batch-to-batch consistency and reproducibility - Improved sensitivity and specificity - Long-term security of supply - Animal-free production <p>For more information see here.</p> <p>Our RabMAb[®] technology is a patented hybridoma-based technology for making rabbit monoclonal antibodies. For details on our patents, please refer to RabMAb[®] patents.</p> <p>Rat: We have preliminary internal testing data to indicate this antibody may not react with this species. Please contact us for more information.</p>

製品の特性

製品の状態	Liquid
保存方法	Shipped at 4°C. Store at -20°C. Stable for 12 months at -20°C.
バッファー	pH: 7.20 Preservative: 0.05% Sodium azide Constituents: 40% Glycerol (glycerin, glycerine), 9.85% Tris glycine, 50% Tissue culture

	supernatant
精製度	Protein A purified
ポリ/モノ	モノクローナル
クローン名	EPR6291
アイソタイプ	IgG

アプリケーション

The Abpromise guarantee **Abpromise保証は、**次のテスト済みアプリケーションにおけるab124738の使用に適用されます
 アプリケーションノートには、推奨の開始希釈率がありますが、適切な希釈率につきましてはご検討ください。

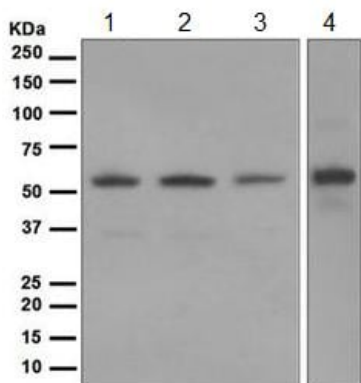
アプリケーション	Abreviews	特記事項
WB		1/10000 - 1/50000. Detects a band of approximately 59 kDa (predicted molecular weight: 59 kDa).
Flow Cyt (Intra)		1/10 - 1/100. ab172730 - Rabbit monoclonal IgG, is suitable for use as an isotype control with this antibody.

追加情報 Is unsuitable for ICC/IF,IHC-P or IP.

ターゲット情報

機能	Catalyzes the rate-limiting step of the oxidative pentose-phosphate pathway, which represents a route for the dissimilation of carbohydrates besides glycolysis. The main function of this enzyme is to provide reducing power (NADPH) and pentose phosphates for fatty acid and nucleic acid synthesis.
組織特異性	Isoform Long is found in lymphoblasts, granulocytes and sperm.
パスウェイ	Carbohydrate degradation; pentose phosphate pathway; D-ribulose 5-phosphate from D-glucose 6-phosphate (oxidative stage): step 1/3.
関連疾患	Anemia, non-spherocytic hemolytic, due to G6PD deficiency
配列類似性	Belongs to the glucose-6-phosphate dehydrogenase family.
翻訳後修飾	Acetylated by ELP3 at Lys-403; acetylation inhibits its homodimerization and enzyme activity. Deacetylated by SIRT2 at Lys-403; deacetylation stimulates its enzyme activity.

画像



Western blot - Anti-Glucose 6 Phosphate Dehydrogenase antibody [EPR6291] (ab124738)

All lanes : Anti-Glucose 6 Phosphate Dehydrogenase antibody [EPR6291] (ab124738) at 1/10000 dilution

Lane 1 : 293T cell lysate

Lane 2 : MOLT4 cell lysate

Lane 3 : HUVEC cell lysate

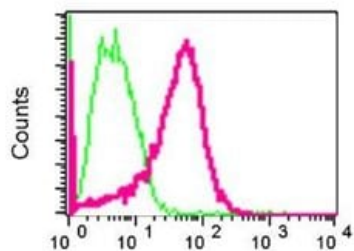
Lane 4 : HeLa cell lysate

Lysates/proteins at 10 µg per lane.

Secondary

All lanes : Goat anti-Rabbit HRP at 1/2000 dilution

Predicted band size: 59 kDa



Flow Cytometry (Intracellular) - Anti-Glucose 6 Phosphate Dehydrogenase antibody [EPR6291] (ab124738)

ab124738 at 1/10 dilution staining Glucose 6 Phosphate Dehydrogenase in permeabilized HeLa cells (red) or a rabbit IgG (negative) (green).

Why choose a recombinant antibody?



Research with confidence
Consistent and reproducible results



Long-term and scalable supply
Recombinant technology



Success from the first experiment
Confirmed specificity



Ethical standards compliant
Animal-free production

Anti-Glucose 6 Phosphate Dehydrogenase antibody
[EPR6291] (ab124738)

Please note: All products are "FOR RESEARCH USE ONLY. NOT FOR USE IN DIAGNOSTIC PROCEDURES"

Our Abpromise to you: Quality guaranteed and expert technical support

- Replacement or refund for products not performing as stated on the datasheet
- Valid for 12 months from date of delivery
- Response to your inquiry within 24 hours
- We provide support in Chinese, English, French, German, Japanese and Spanish
- Extensive multi-media technical resources to help you
- We investigate all quality concerns to ensure our products perform to the highest standards

If the product does not perform as described on this datasheet, we will offer a refund or replacement. For full details of the Abpromise, please visit <https://www.abcam.co.jp/abpromise> or contact our technical team.

Terms and conditions

- Guarantee only valid for products bought direct from Abcam or one of our authorized distributors