

Anti-GLP2 antibody [EPR3073] ab92502

リコンビナント **RabMAb**

画像数 2

製品の概要

製品名	Anti-GLP2 antibody [EPR3073]
製品の詳細	Rabbit monoclonal [EPR3073] to GLP2
由来種	Rabbit
アプリケーション	適用あり: WB 適用なし: IHC-P or IP
種交差性	交差種: Human
免疫原	Synthetic peptide. This information is proprietary to Abcam and/or its suppliers.
ポジティブ・コントロール	GLP2 recombinant protein
特記事項	<p>This product is a recombinant monoclonal antibody, which offers several advantages including:</p> <ul style="list-style-type: none"> - High batch-to-batch consistency and reproducibility - Improved sensitivity and specificity - Long-term security of supply - Animal-free production <p>For more information see here.</p> <p>Our RabMAb[®] technology is a patented hybridoma-based technology for making rabbit monoclonal antibodies. For details on our patents, please refer to RabMAb[®] patents.</p> <p>Mouse, Rat: We have preliminary internal testing data to indicate this antibody may not react with these species. Please contact us for more information.</p>

製品の特性

製品の状態	Liquid
保存方法	Shipped at 4°C. Store at -20°C. Stable for 12 months at -20°C.
バッファー	pH: 7.20 Preservative: 0.01% Sodium azide Constituents: 59% PBS, 40% Glycerol (glycerin, glycerine), 0.5% BSA
精製度	Protein A purified
ポリ/モノ	モノクローナル
クローン名	EPR3073

アイソタイプIgG

アプリケーション

The Abpromise guarantee **Abpromise保証は、** 次のテスト済みアプリケーションにおけるab92502の使用に適用されます
アプリケーションノートには、推奨の開始希釈率がありますが、適切な希釈率につきましてはご検討ください。

アプリケーション	Abreviews	特記事項
WB		1/1000 - 1/10000. Predicted molecular weight: 21 kDa.

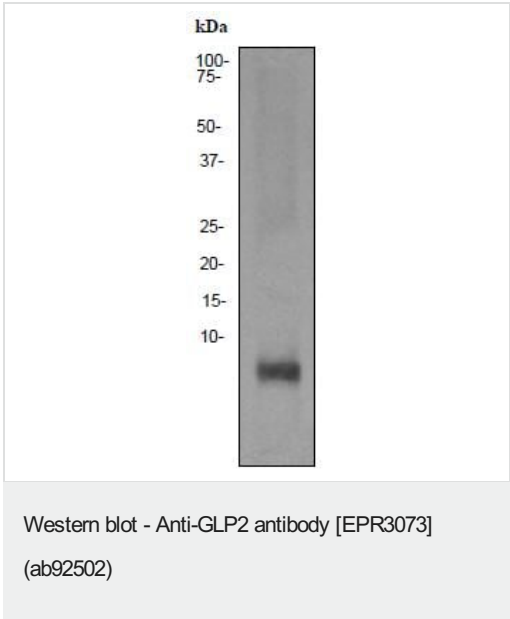
追加情報 Is unsuitable for IHC-P or IP.

ターゲット情報

関連性 Human GLP2 (glucagon like peptide 2) is a peptide hormone of the glucagon family produced by the L cells of the intestinal mucosa and originates from the same prohormone as glucagon. GLP2 has been shown to be an important growth factor for the intestinal mucosa.

細胞内局在 Secreted

画像



Anti-GLP2 antibody [EPR3073] (ab92502) at 1/1000 dilution +
GLP2 recombinant protein

Predicted band size: 21 kDa
Observed band size: 4 kDa

Why choose a recombinant antibody?



Research with confidence
Consistent and reproducible results



Long-term and scalable supply
Recombinant technology



Success from the first experiment
Confirmed specificity



Ethical standards compliant
Animal-free production

Anti-GLP2 antibody [EPR3073] (ab92502)

Please note: All products are "FOR RESEARCH USE ONLY. NOT FOR USE IN DIAGNOSTIC PROCEDURES"

Our Abpromise to you: Quality guaranteed and expert technical support

- Replacement or refund for products not performing as stated on the datasheet
- Valid for 12 months from date of delivery
- Response to your inquiry within 24 hours
- We provide support in Chinese, English, French, German, Japanese and Spanish
- Extensive multi-media technical resources to help you
- We investigate all quality concerns to ensure our products perform to the highest standards

If the product does not perform as described on this datasheet, we will offer a refund or replacement. For full details of the Abpromise, please visit <https://www.abcam.co.jp/abpromise> or contact our technical team.

Terms and conditions

- Guarantee only valid for products bought direct from Abcam or one of our authorized distributors