


Anti-GIRK2 antibody ab65096

★★★★☆ [1 Abreviews](#) [9 References](#) [画像数 1](#)

製品の概要

製品名	Anti-GIRK2 antibody
製品の詳細	Goat polyclonal to GIRK2
由来種	Goat
アプリケーション	適用あり: ELISA, IHC-P, WB, ICC/IF, IHC-FrFI
種交差性	交差種: Mouse, Rat, Human 交差が予測される動物種: Syrian hamster, Orangutan 
免疫原	Synthetic peptide within Human GIRK2 aa 350 to the C-terminus (Cysteine residue). The exact immunogen sequence used to generate this antibody is proprietary information. If additional detail on the immunogen is needed to determine the suitability of the antibody for your needs, please contact our Scientific Support team to discuss your requirements. Run BLAST with Run BLAST with
ポジティブ・コントロール	WB: Human Brain (Substantia Nigra) tissue lysate.
特記事項	<p>The Life Science industry has been in the grips of a reproducibility crisis for a number of years. Abcam is leading the way in addressing this with our range of recombinant monoclonal antibodies and knockout edited cell lines for gold-standard validation. Please check that this product meets your needs before purchasing.</p> <p>If you have any questions, special requirements or concerns, please send us an inquiry and/or contact our Support team ahead of purchase. Recommended alternatives for this product can be found below, along with publications, customer reviews and Q&As</p>

製品の特性

製品の状態	Liquid
保存方法	Shipped at 4°C. Upon delivery aliquot and store at -20°C or -80°C. Avoid repeated freeze / thaw cycles.
バッファー	pH: 7.30 Preservative: 0.02% Sodium azide Constituents: 0.5% Tris buffered saline, 0.5% BSA Without Mg ²⁺ and Ca ²⁺
精製度	Immunogen affinity purified

特記事項(精製)	Purified from goat serum by ammonium sulphate precipitation followed by antigen affinity chromatography using the immunizing peptide.
ポリモノ	ポリクローナル
アイソタイプ	IgG

アプリケーション

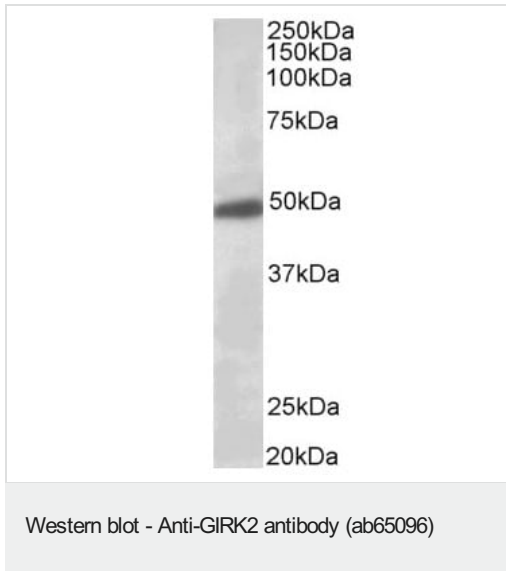
The Abpromise guarantee Abpromise保証は、次のテスト済みアプリケーションにおけるab65096の使用に適用されます
 アプリケーションノートには、推奨の開始希釈率がありますが、適切な希釈率につきましてはご検討ください。

アプリケーション	Abreviews	特記事項
ELISA		Use at an assay dependent concentration.
IHC-P		Use at an assay dependent concentration.
WB		Use a concentration of 2 - 6 µg/ml. Detects a band of approximately 48 kDa (predicted molecular weight: 47 kDa). 1 hour primary incubation is recommended for this product.
ICC/IF		Use at an assay dependent concentration. PubMed: 24586273
IHC-FrFI	★★★★★ (1)	Use at an assay dependent concentration.

ターゲット情報

機能	This potassium channel may be involved in the regulation of insulin secretion by glucose and/or neurotransmitters acting through G-protein-coupled receptors. Inward rectifier potassium channels are characterized by a greater tendency to allow potassium to flow into the cell rather than out of it. Their voltage dependence is regulated by the concentration of extracellular potassium; as external potassium is raised, the voltage range of the channel opening shifts to more positive voltages. The inward rectification is mainly due to the blockage of outward current by internal magnesium.
組織特異性	Most abundant in cerebellum, and to a lesser degree in islets and exocrine pancreas.
関連疾患	Keppen-Lubinsky syndrome
配列類似性	Belongs to the inward rectifier-type potassium channel (TC 1.A.2.1) family. KCNJ6 subfamily.
細胞内局在	Membrane.

画像



Anti-GIRK2 antibody (ab65096) at 0.5 µg/ml + Human Brain (Substantia Nigra) tissue lysate in RIPA buffer at 35 µg

Predicted band size: 47 kDa

Observed band size: 48 kDa

Primary incubation for 1 hour. Detected by chemiluminescence.

Please note: All products are "FOR RESEARCH USE ONLY. NOT FOR USE IN DIAGNOSTIC PROCEDURES"

Our Abpromise to you: Quality guaranteed and expert technical support

- Replacement or refund for products not performing as stated on the datasheet
- Valid for 12 months from date of delivery
- Response to your inquiry within 24 hours
- We provide support in Chinese, English, French, German, Japanese and Spanish
- Extensive multi-media technical resources to help you
- We investigate all quality concerns to ensure our products perform to the highest standards

If the product does not perform as described on this datasheet, we will offer a refund or replacement. For full details of the Abpromise, please visit <https://www.abcam.co.jp/abpromise> or contact our technical team.

Terms and conditions

- Guarantee only valid for products bought direct from Abcam or one of our authorized distributors