

Anti-GHRHR antibody ab76263

19 References **画像数 3**

製品の概要

製品名	Anti-GHRHR antibody
製品の詳細	Rabbit polyclonal to GHRHR
由来種	Rabbit
アプリケーション	適用あり: WB, ICC/IF
種交差性	交差種: Human
免疫原	Synthetic peptide corresponding to Human GHRHR (C terminal).
特記事項	<p>The Life Science industry has been in the grips of a reproducibility crisis for a number of years. Abcam is leading the way in addressing this with our range of recombinant monoclonal antibodies and knockout edited cell lines for gold-standard validation. Please check that this product meets your needs before purchasing.</p> <p>If you have any questions, special requirements or concerns, please send us an inquiry and/or contact our Support team ahead of purchase. Recommended alternatives for this product can be found below, along with publications, customer reviews and Q&As</p>

製品の特性

製品の状態	Liquid
保存方法	Shipped at 4°C. Upon delivery aliquot and store at -20°C. Avoid freeze / thaw cycles.
バッファー	<p>pH: 7.40</p> <p>Preservative: 0.02% Sodium azide</p> <p>Constituents: 50% Glycerol (glycerin, glycerine), 0.87% Sodium chloride, PBS</p>
精製度	Immunogen affinity purified
ポリ/モノ	ポリクローナル
アイソタイプ	IgG

アプリケーション

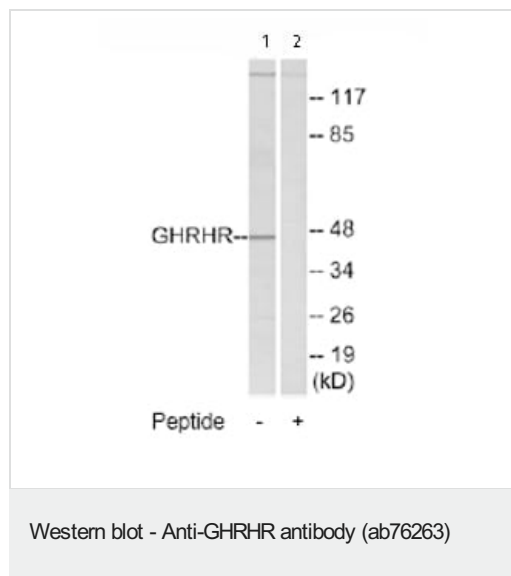
The Abpromise guarantee **Abpromise保証は、次のテスト済みアプリケーションにおけるab76263の使用に適用されます**
 アプリケーションノートには、推奨の開始希釈率がありますが、適切な希釈率につきましてはご検討ください。

アプリケーション	Abreviews	特記事項
WB		1/500 - 1/1000. Predicted molecular weight: 47 kDa. Use BSA for blocking
ICC/IF		1/500 - 1/1000.

ターゲット情報

機能	Receptor for GRF, coupled to G proteins which activate adenylyl cyclase. Stimulates somatotroph cell growth, growth hormone gene transcription and growth hormone secretion.
組織特異性	Pituitary gland.
関連疾患	Defects in GHRHR are a cause of growth hormone deficiency isolated type 1B (IGHD1B) [MIM:612781]; also known as dwarfism of Sindh. IGHD1B is an autosomal recessive deficiency of GH which causes short stature. IGHD1B patients have low but detectable levels of GH.
配列類似性	Belongs to the G-protein coupled receptor 2 family.
細胞内局在	Cell membrane.

画像



All lanes : Anti-GHRHR antibody (ab76263) at 1/500 dilution

Lane 1 : Extracts from LOVO cells

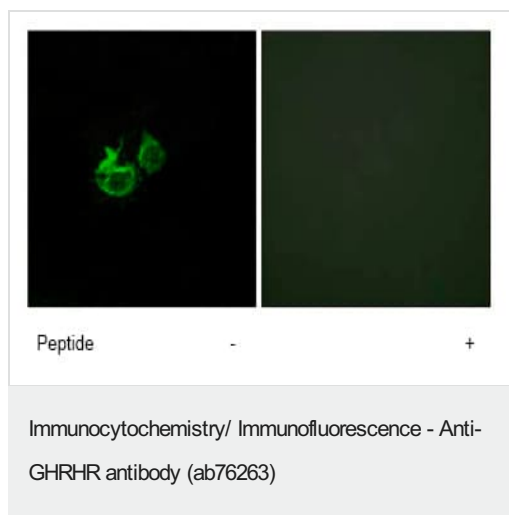
Lane 2 : Extracts from LOVO cells with immunizing peptide at 5 µg

Lysates/proteins at 5 µg per lane.

Predicted band size: 47 kDa

Observed band size: 47 kDa

Additional bands at: >117 kDa. We are unsure as to the identity of these extra bands.



Immunofluorescence analysis of HUVEC cells using ab76263 at a 1/500 dilution.

Left image un-treated.

Right image treated with immunizing peptide.



Immunofluorescence analysis of mouse pituitary cells, staining GHRHR with ab76263.

Cells were fixed with 4% paraformaldehyde and blocked using 4% NGS in PBS with 0.3% Triton X-100 for 1 hour at room temperature. Cells were incubated with primary antibody (1/50) in 4% NGS for 18 hours at 4°C. Slides were washed three times for 15 min with PBS and then incubated in 4% NGS with an AlexaFluor®488-conjugated anti- rabbit secondary antibody (1/1000) for 1 hour at room temperature.

Please note: All products are "FOR RESEARCH USE ONLY. NOT FOR USE IN DIAGNOSTIC PROCEDURES"

Our Abpromise to you: Quality guaranteed and expert technical support

- Replacement or refund for products not performing as stated on the datasheet
- Valid for 12 months from date of delivery
- Response to your inquiry within 24 hours
- We provide support in Chinese, English, French, German, Japanese and Spanish
- Extensive multi-media technical resources to help you
- We investigate all quality concerns to ensure our products perform to the highest standards

If the product does not perform as described on this datasheet, we will offer a refund or replacement. For full details of the Abpromise, please visit <https://www.abcam.co.jp/abpromise> or contact our technical team.

Terms and conditions

- Guarantee only valid for products bought direct from Abcam or one of our authorized distributors