

Anti-GFP antibody [9F9.F9] ab1218

★★★★★ [44 Abreviews](#) [395 References](#) [画像数 4](#)

製品の概要

製品名	Anti-GFP antibody [9F9.F9]
製品の詳細	Mouse monoclonal [9F9.F9] to GFP
由来種	Mouse
特異性	This antibody is known to cross react with the wild type (WT), recombinant (rGFP) and enhanced (eGFP) forms.
アプリケーション	適用あり: WB, IHC-Fr, Sandwich ELISA, ICC/IF
種交差性	交差種: Species independent
免疫原	Recombinant fragment within GFP aa 1 to the C-terminus. The exact immunogen sequence used to generate this antibody is proprietary information. If additional detail on the immunogen is needed to determine the suitability of the antibody for your needs, please contact our Scientific Support team to discuss your requirements. Full Length Fusion Protein. Derived from the jellyfish <i>Aequorea victoria</i> . Database link: P42212
ポジティブ・コントロール	Pure GFP protein, or cells known to overexpress GFP.
特記事項	<p>The Life Science industry has been in the grips of a reproducibility crisis for a number of years. Abcam is leading the way in addressing this with our range of recombinant monoclonal antibodies and knockout edited cell lines for gold-standard validation. Please check that this product meets your needs before purchasing.</p> <p>If you have any questions, special requirements or concerns, please send us an inquiry and/or contact our Support team ahead of purchase. Recommended alternatives for this product can be found below, along with publications, customer reviews and Q&As</p>

製品の特性

製品の状態	Liquid
保存方法	Shipped at 4°C. Store at +4°C short term (1-2 weeks). Upon delivery aliquot. Store at -20°C or -80°C. Avoid freeze / thaw cycle.
バッファー	Preservative: 0.01% Sodium azide Constituents: 0.87% Sodium chloride, 0.42% Potassium phosphate
精製度	Protein A purified
特記事項 (精製)	GFP Monoclonal Antibody was prepared from tissue culture supernatant by Protein A affinity

	chromatography.
ポリ/モノ	モノクローナル
クローン名	9F9.F9
アイソタイプ	IgG1
軽鎖の種類	kappa

アプリケーション

The Abpromise guarantee **Abpromise保証は、次のテスト済みアプリケーションにおけるab1218の使用に適用されます**
 アプリケーションノートには、推奨の開始希釈率がありますが、適切な希釈率につきましてはご検討ください。

アプリケーション	Abreviews	特記事項
WB	★★★★★ (23)	1/3000 - 1/30000. (See Abreviews). Recognises the immunogen under native conditions and reduced/denatured conditions.
IHC-Fr	★★★★★ (2)	1/1000 - 1/5000. Works also with eYFP.
Sandwich ELISA		Use at an assay dependent concentration.
ICC/IF	★★★★★ (13)	Use at an assay dependent concentration.

ターゲット情報

関連性	Function: Energy-transfer acceptor. Its role is to transduce the blue chemiluminescence of the protein aequorin into green fluorescent light by energy transfer. Fluoresces in vivo upon receiving energy from the Ca^{2+} -activated photoprotein aequorin.
	Subunit structure: Monomer.
	Tissue specificity: Photocytes.
	Post-translational modification: Contains a chromophore consisting of modified amino acid residues. The chromophore is formed by autocatalytic backbone condensation between Ser-65 and Gly-67, and oxidation of Tyr-66 to dihydroxytyrosine. Maturation of the chromophore requires nothing other than molecular oxygen.
	Biotechnological use: Green fluorescent protein has been engineered to produce a vast number of variously colored mutants, fusion proteins, and biosensors. Fluorescent proteins and its mutated allelic forms, blue, cyan and yellow have become a useful and ubiquitous tool for making chimeric proteins, where they function as a fluorescent protein tag. Typically they tolerate N- and C-terminal fusion to a broad variety of proteins. They have been expressed in most known cell types and are used as a noninvasive fluorescent marker in living cells and organisms. They enable a wide range of applications where they have functioned as a cell lineage tracer, reporter of gene expression, or as a measure of protein-protein interactions. Can also be used as a molecular thermometer, allowing accurate temperature measurements in fluids. The measurement process relies on the detection of the blinking of GFP using fluorescence correlation

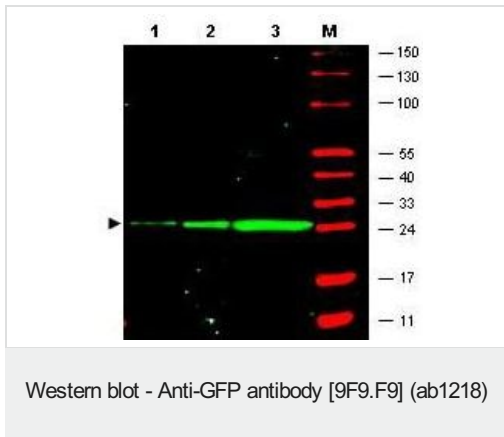
spectroscopy.

Sequence similarities: Belongs to the GFP family.

Biophysicochemical properties: Absorption: Abs(max)=395 nm

Exhibits a smaller absorbance peak at 470 nm. The fluorescence emission spectrum peaks at 509 nm with a shoulder at 540 nm.

画像



All lanes : Anti-GFP antibody [9F9.F9] (ab1218) at 1 mg/ml (1 hour at room temperature)

Lane 1 : HeLa lysate 50ng with BLOTTO, overnight at 4°C

Lane 2 : HeLa lysate 100ng with BLOTTO, overnight at 4°C

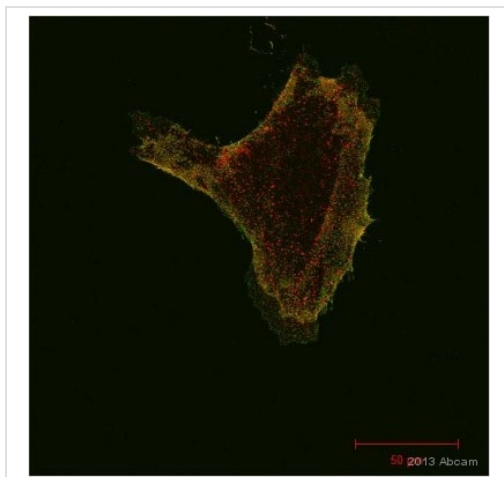
Lane 3 : HeLa lysate 500ng with BLOTTO, overnight at 4°C

Blocking peptides at 5 % per lane.

Secondary

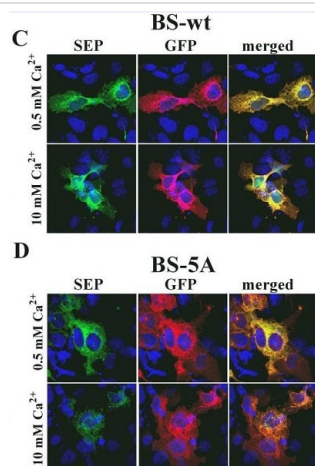
All lanes : IRDye® 800 conjugated Goat anti-mouse IgG (H+L), 45 minutes at room temperature at 1/2500 dilution

Additional bands at: 27 kDa. We are unsure as to the identity of these extra bands.



Immunocytochemistry/ Immunofluorescence - Anti-GFP antibody [9F9.F9] (ab1218)

This image is courtesy of an anonymous Abreview



Immunocytochemistry/ Immunofluorescence - Anti-GFP antibody [9F9.F9] (ab1218)

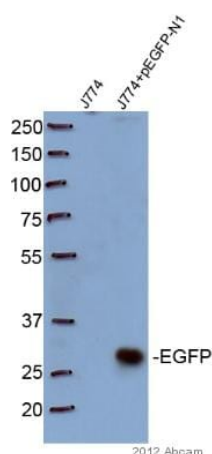
Grant, M.P. et al PLoS One. 2015 Aug 28;10(8):e0136702. doi: 10.1371/journal.pone.0136702. eCollection 2015

TIRFM responses to prolonged stimulation with 10 mM Ca^{2+}

C. Cells expressing BS-wt were stimulated with 0.5 or 10 mM Ca^{2+} for 60 min, 37°C, followed by fixation, permeabilization, and staining with anti-GFP antibody (secondary antibody tagged with Alexa-568). Confocal images of SEP and anti-GFP fluorescence are shown along with the merged image. **D.** Experiment as in **C** for cells expressing BS-5A mutant.

HEK-293 cells were seeded on glass coverslips and transiently transfected with BS-wt or BS-5A cDNAs. Cells were incubated in DMEM containing 0.5 or 10 mM Ca^{2+} for 1 hr at 37°C, 5% CO_2 .

Following incubation, cells were immediately fixed in 4% paraformaldehyde for 10 min, RT, permeabilized with 0.2% Triton X-100 (10 min), blocked with 5% serum and 0.1% BSA then incubated with monoclonal anti-GFP antibody (Abcam), followed by goat anti-mouse secondary antibody conjugated to Alexa-568.



Western blot - Anti-GFP antibody [9F9.F9] (ab1218)

Image courtesy of an anonymous Abreview

All lanes : Anti-GFP antibody [9F9.F9] (ab1218) at 1/1000 dilution (2 hours at 25°C)

Lane 1 : J774 with Milk, 2 hours at 25°C

Lane 2 : J774+pEGFP-N1 with Milk, 2 hours at 25°C

Lysates/proteins at 20 µg per lane.

Blocking peptides at 5 % per lane.

Secondary

All lanes : Goat anti-mouse HRP at 1/10000 dilution

Developed using the ECL technique.

Performed under reducing conditions.

Additional bands at: 26 kDa. We are unsure as to the identity of these extra bands.

Exposure time: 1 minute

Please note: All products are "FOR RESEARCH USE ONLY. NOT FOR USE IN DIAGNOSTIC PROCEDURES"

Our Abpromise to you: Quality guaranteed and expert technical support

- Replacement or refund for products not performing as stated on the datasheet
- Valid for 12 months from date of delivery
- Response to your inquiry within 24 hours

- We provide support in Chinese, English, French, German, Japanese and Spanish
- Extensive multi-media technical resources to help you
- We investigate all quality concerns to ensure our products perform to the highest standards

If the product does not perform as described on this datasheet, we will offer a refund or replacement. For full details of the Abpromise, please visit <https://www.abcam.co.jp/abpromise> or contact our technical team.

Terms and conditions

- Guarantee only valid for products bought direct from Abcam or one of our authorized distributors