




Anti-GDF15 antibody ab39999

★★★★☆ **5 Abreviews** **9 References** 画像数 5

製品の概要

製品名	Anti-GDF15 antibody
製品の詳細	Goat polyclonal to GDF15
由来種	Goat
アプリケーション	適用あり: WB, IHC-Fr, ICC/IF, IHC-P, Flow Cyt (Intra)
種交差性	交差種: Rat, Human 交差が予測される動物種: Mouse 
免疫原	Synthetic peptide: QKTDGTGVS LQTYDD, corresponding to C terminal amino acids 286-299 of Human GDF15  Run BLAST with  Run BLAST with 
ポジティブ・コントロール	Flow Cyt (Intra): HeLa cells. WB: Human prostate lysates, A549 cell lysate, CaCo-2 cell lysate, LNCaP cell lysate.
特記事項	<p>The Life Science industry has been in the grips of a reproducibility crisis for a number of years. Abcam is leading the way in addressing this with our range of recombinant monoclonal antibodies and knockout edited cell lines for gold-standard validation. Please check that this product meets your needs before purchasing.</p> <p>If you have any questions, special requirements or concerns, please send us an inquiry and/or contact our Support team ahead of purchase. Recommended alternatives for this product can be found below, along with publications, customer reviews and Q&As</p>

製品の特性

製品の状態	Liquid
保存方法	Shipped at 4°C. Upon delivery aliquot and store at -20°C. Avoid freeze / thaw cycles.
バッファー	pH: 7.30 Preservative: 0.02% Sodium azide Constituents: Tris buffered saline, 0.5% BSA
精製度	Immunogen affinity purified
特記事項(精製)	Purified from goat serum by ammonium sulphate precipitation followed by antigen affinity chromatography using the immunizing peptide.
ポリ/モノ	ポリクローナル

アイソタイプIgG

アプリケーション

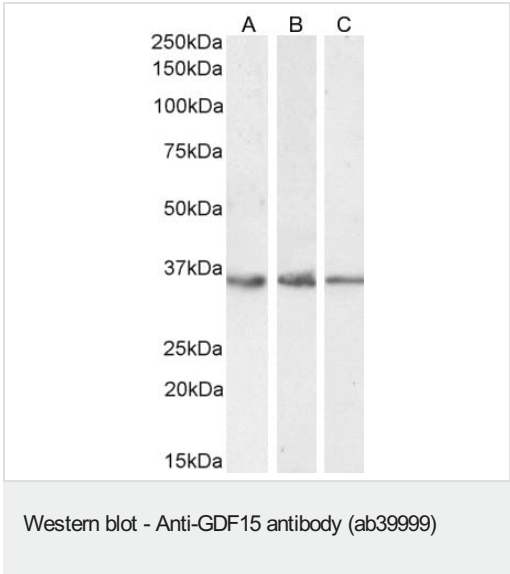
The Abpromise guarantee **Abpromise保証は、** 次のテスト済みアプリケーションにおけるab39999の使用に適用されます
アプリケーションノートには、推奨の開始希釈率がありますが、適切な希釈率につきましてはご検討ください。

アプリケーション	Abreviews	特記事項
WB	★★★★★ (2)	Use a concentration of 0.1 µg/ml. Detects a band of approximately 30-35 kDa (predicted molecular weight: 34 kDa). 1 hour primary incubation is recommended for this product.
IHC-Fr	★★★★★ (1)	Use at an assay dependent concentration. See Abreview.
ICC/IF	★★★★★ (1)	Use at an assay dependent concentration.
IHC-P	★★★★★ (1)	Use a concentration of 7 µg/ml.
Flow Cyt (Intra)		Use a concentration of 10 µg/ml.

ターゲット情報

組織特異性	Highly expressed in placenta, with lower levels in prostate and colon and some expression in kidney.
配列類似性	Belongs to the TGF-beta family.
細胞内局在	Secreted.

画像



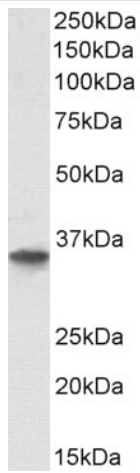
Lanes 1-2 : Anti-GDF15 antibody (ab39999) at 0.1 µg/ml
Lane 3 : Anti-GDF15 antibody (ab39999) at 0.3 µg/ml

Lane 1 : A549 cell lysate
Lane 2 : CaCo-2 cell lysate
Lane 3 : LNCaP cell lysate

Lysates/proteins at 35 µg per lane.

Predicted band size: 34 kDa

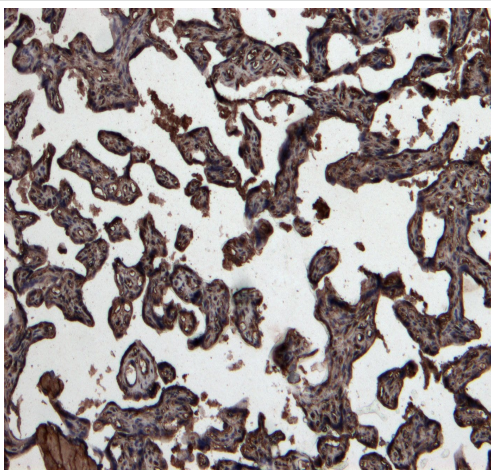
Detected by chemiluminescence.



Western blot - Anti-GDF15 antibody (ab39999)

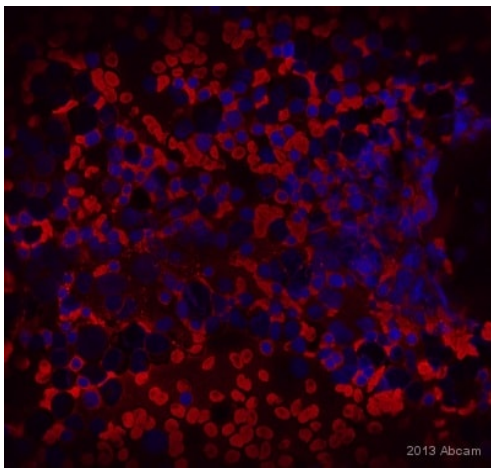
Anti-GDF15 antibody (ab39999) at 0.5 μ g/ml + Human prostate whole cell lysate (protein in RIPA buffer) at 35 μ g

Predicted band size: 34 kDa



Immunohistochemistry (Formalin/PFA-fixed paraffin-embedded sections) - Anti-GDF15 antibody (ab39999)

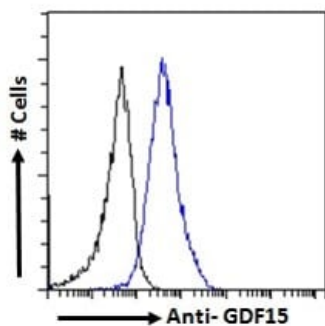
Immunohistochemical analysis of paraffin embedded Human placenta stained with ab39999 at 7 μ g/ml. Heat induced antigen retrieval with citrate buffer pH 6, HRP-staining.



Immunocytochemistry/ Immunofluorescence - Anti-GDF15 antibody (ab39999)

This image is courtesy of an abreview submitted by Dr. Ruma Raha-Chowdhury, Cambridge University, United Kingdom.

ICC/IF image of human bone marrow smear stained with Ab39999(1/250). The smear was permeabilized in 0.1% PBS-Triton X for 1h and incubated with 10% donkey serum for 1hr at 24°C to block non-specific protein-protein interactions. The sections were then incubated with ab39999 used at 1/250 dilution, overnight at +4°C. The secondary antibody was Alexa Fluor® 568 donkey anti-goat used at a 1/1000 dilution for 1h. DAPI was used to stain the cell nuclei (blue) at a concentration of 1.43µM.



Flow Cytometry (Intracellular) - Anti-GDF15 antibody (ab39999)

Flow cytometric analysis of paraformaldehyde fixed, 0.5% Triton permeabilized HeLa (Human epithelial cell line from cervix adenocarcinoma) cells labeling GDF-15 using ab39999 at 10 µg/ml followed by Alexa Fluor 488 secondary antibody (blue) at 1 µg/ml. Unimmunized goat IgG was used as isotype control, followed by Alexa Fluor 488 secondary antibody (black).

Please note: All products are "FOR RESEARCH USE ONLY. NOT FOR USE IN DIAGNOSTIC PROCEDURES"

Our Abpromise to you: Quality guaranteed and expert technical support

- Replacement or refund for products not performing as stated on the datasheet
- Valid for 12 months from date of delivery
- Response to your inquiry within 24 hours
- We provide support in Chinese, English, French, German, Japanese and Spanish
- Extensive multi-media technical resources to help you
- We investigate all quality concerns to ensure our products perform to the highest standards

If the product does not perform as described on this datasheet, we will offer a refund or replacement. For full details of the Abpromise, please visit <https://www.abcam.co.jp/abpromise> or contact our technical team.

Terms and conditions

- Guarantee only valid for products bought direct from Abcam or one of our authorized distributors