


### Anti-GCLC antibody ab41463

**36 References**   [画像数 1](#)

#### 製品の概要

製品名	Anti-GCLC antibody
製品の詳細	Rabbit polyclonal to GCLC
由来種	Rabbit
アプリケーション	<b>適用あり:</b> WB
種交差性	<b>交差種:</b> Human <b>交差が予測される動物種:</b> Mouse, Rat, Cow 
免疫原	Synthetic peptide corresponding to Human GCLC aa 50-150 conjugated to keyhole limpet haemocyanin.
ポジティブ・コントロール	This antibody gave a positive signal in the following Human Tissue Lysates: Liver, Kidney and Lung (Adenocarcinoma). This antibody gave a positive result in IHC in the following FFPE tissue: Human lung adenocarcinoma.
特記事項	<p>The Life Science industry has been in the grips of a reproducibility crisis for a number of years. Abcam is leading the way in addressing this with our range of recombinant monoclonal antibodies and knockout edited cell lines for gold-standard validation. Please check that this product meets your needs before purchasing.</p> <p>If you have any questions, special requirements or concerns, please send us an inquiry and/or contact our Support team ahead of purchase. Recommended alternatives for this product can be found below, along with publications, customer reviews and Q&amp;As</p>

#### 製品の特性

製品の状態	Liquid
保存方法	Shipped at 4°C. Store at +4°C short term (1-2 weeks). Upon delivery aliquot. Store at -20°C or -80°C. Avoid freeze / thaw cycle.
バッファー	<p>pH: 7.40</p> <p>Preservative: 0.02% Sodium azide</p> <p>Constituent: PBS</p> <p>Batches of this product that have a concentration &lt; 1mg/ml may have BSA added as a stabilising agent. If you would like information about the formulation of a specific lot, please contact our scientific support team who will be happy to help.</p>

精製度	Immunogen affinity purified
ポリ/モノ	ポリクローナル
アイソタイプ	IgG

アプリケーション

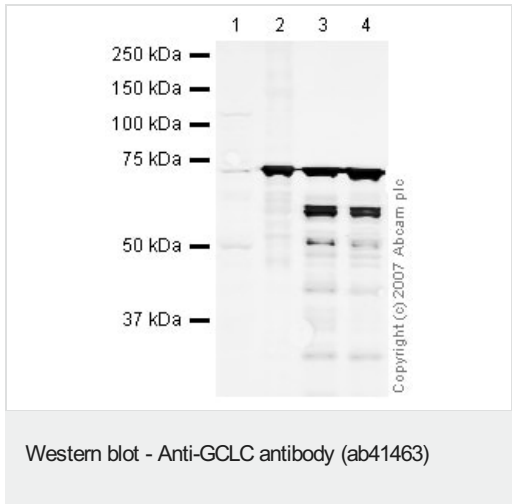
The Abpromise guarantee      **Abpromise保証は、次のテスト済みアプリケーションにおけるab41463の使用に適用されます**  
アプリケーションノートには、推奨の開始希釈率がありますが、適切な希釈率につきましてはご検討ください。

アプリケーション	Abreviews	特記事項
WB		Use a concentration of 1 µg/ml. Detects a band of approximately 73 kDa (predicted molecular weight: 73 kDa).

ターゲット情報

パスウェイ	Sulfur metabolism; glutathione biosynthesis; glutathione from L-cysteine and L-glutamate: step 1/2.
関連疾患	Defects in GCLC are the cause of hemolytic anemia (HAGGSD) [MIM:230450].
配列類似性	Belongs to the glutamate--cysteine ligase type 3 family.

画像



**All lanes :** Anti-GCLC antibody (ab41463) at 1 µg/ml

**Lane 1 :** Jurkat (Human T cell lymphoblast-like cell line) Whole Cell Lysate

**Lane 2 :** Human lung tissue lysate (adenocarcinoma) - insoluble fraction (female, 80 years) ([ab42923](#))

**Lane 3 :** Human kidney tissue lysate - total protein ([ab30203](#))

**Lane 4 :** Human liver tissue lysate - total protein ([ab29889](#))

Lysates/proteins at 10 µg per lane.

**Secondary**  
**All lanes :** IRDye 680 Conjugated Goat Anti-Rabbit IgG (H+L) at 1/10000 dilution

Performed under reducing conditions.

**Predicted band size:** 73 kDa  
**Observed band size:** 73 kDa  
**Additional bands at:** 58 kDa, 60 kDa. We are unsure as to the

identity of these extra bands.

**Please note:** All products are "FOR RESEARCH USE ONLY. NOT FOR USE IN DIAGNOSTIC PROCEDURES"

### **Our Abpromise to you: Quality guaranteed and expert technical support**

---

- Replacement or refund for products not performing as stated on the datasheet
- Valid for 12 months from date of delivery
- Response to your inquiry within 24 hours
- We provide support in Chinese, English, French, German, Japanese and Spanish
- Extensive multi-media technical resources to help you
- We investigate all quality concerns to ensure our products perform to the highest standards

If the product does not perform as described on this datasheet, we will offer a refund or replacement. For full details of the Abpromise, please visit <https://www.abcam.co.jp/abpromise> or contact our technical team.

### **Terms and conditions**

---

- Guarantee only valid for products bought direct from Abcam or one of our authorized distributors