


Anti-GC1q R antibody [60.11] ab24733

★★★★★ [3 Abreviews](#) [26 References](#) [画像数 6](#)

製品の概要

製品名	Anti-GC1q R antibody [60.11]
製品の詳細	Mouse monoclonal [60.11] to GC1q R
由来種	Mouse
アプリケーション	適用あり: IHC-P, WB, ICC/IF, Flow Cyt (Intra)
種交差性	交差種: Human 交差が予測される動物種: Mouse, Rat 
免疫原	Recombinant full length protein corresponding to GC1q R.
ポジティブ・コントロール	This antibody gave a positive signal in Human tonsil tissue sections. This antibody gave a positive signal in the following Methanol fixed cell lines: HeLa.
特記事項	<p>This antibody clone is manufactured by Abcam. If you require a custom buffer formulation or conjugation for your experiments, please contact orders@abcam.com.</p> <p>The Life Science industry has been in the grips of a reproducibility crisis for a number of years. Abcam is leading the way in addressing this with our range of recombinant monoclonal antibodies and knockout edited cell lines for gold-standard validation. Please check that this product meets your needs before purchasing.</p> <p>If you have any questions, special requirements or concerns, please send us an inquiry and/or contact our Support team ahead of purchase. Recommended alternatives for this product can be found below, along with publications, customer reviews and Q&As</p>

製品の特性

製品の状態	Liquid
保存方法	Shipped at 4°C. Upon delivery aliquot and store at -20°C. Avoid freeze / thaw cycles.
バッファー	pH: 4.7 Preservative: 0.02% Sodium azide Constituents: PBS, 6.97% L-Arginine
精製度	Protein G purified
ポリ/モノ	モノクローナル
クローン名	60.11
アイソタイプ	IgG1

アプリケーション

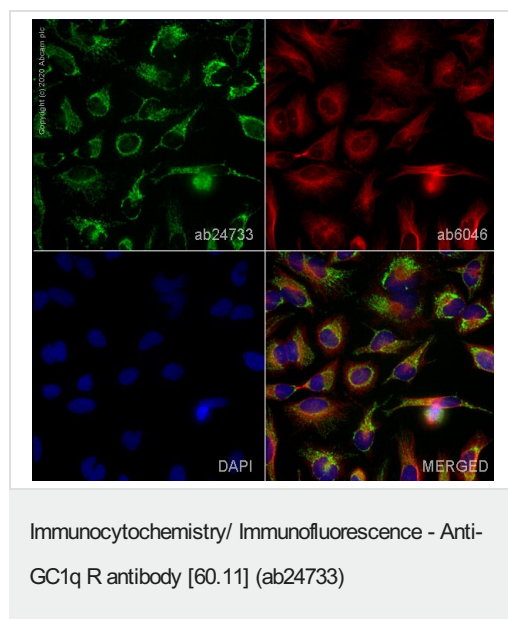
The Abpromise guarantee **Abpromise保証は、次のテスト済みアプリケーションにおけるab24733の使用に適用されず**
アプリケーションノートには、推奨の開始希釈率がありますが、適切な希釈率につきましてはご確認ください。

アプリケーション	Abreviews	特記事項
IHC-P		Use a concentration of 5 µg/ml. Perform heat mediated antigen retrieval with citrate buffer pH 6 before commencing with IHC staining protocol.
WB	★★★★★ (2)	Use a concentration of 5 µg/ml. Detects a band of approximately 33 kDa (predicted molecular weight: 33 kDa).
ICC/IF		Use a concentration of 5 µg/ml.
Flow Cyt (Intra)		Use 0.5µg for 10 ⁶ cells. ab170190 - Mouse monoclonal IgG1, is suitable for use as an isotype control with this antibody.

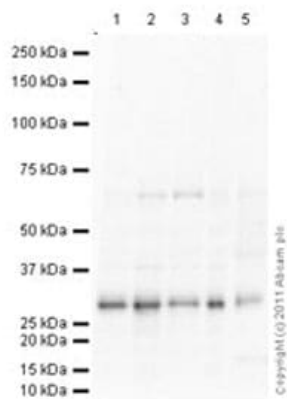
ターゲット情報

機能	Binds to the globular "heads" of C1q thus inhibiting C1 activation.
配列類似性	Belongs to the MAM33 family.
細胞内局在	Mitochondrion matrix. Nucleus. Might also be nuclear in some cell types.

画像



ab24733 staining GC1q R in HeLa cells. The cells were fixed with 100% methanol (5 min), permeabilized with 0.1% PBS-Tween for 5 minutes and then blocked with 1% BSA/10% normal goat serum/0.3M glycine in 0.1%PBS-Tween for 1h. The cells were then incubated overnight at 4°C with ab24733 at 5µg/ml and **ab6046**, Rabbit polyclonal to beta Tubulin - Loading Control. Cells were then incubated with **ab150117**, Goat polyclonal Secondary Antibody to Mouse IgG H&L (Alexa Fluor® 488) preadsorbed at 1/1000 dilution (shown in green) and **ab150080**, Goat polyclonal Secondary Antibody to Rabbit IgG - H&L (Alexa Fluor® 594) at 1/1000 dilution (shown in pseudocolour red). Nuclear DNA was labelled with DAPI (shown in blue).



Western blot - Anti-GC1q R antibody [60.11] (ab24733)

All lanes : Anti-GC1q R antibody [60.11] (ab24733) at 5 µg/ml

Lane 1 : HEK293 (Human embryonic kidney cell line) Whole Cell Lysate

Lane 2 : HeLa (Human epithelial carcinoma cell line) Whole Cell Lysate

Lane 3 : HepG2 (Human hepatocellular liver carcinoma cell line) Whole Cell Lysate

Lane 4 : Raji (Human Burkitt's lymphoma cell line) Whole Cell Lysate

Lane 5 : Human liver tissue lysate - total protein ([ab29889](#))

Lysates/proteins at 20 µg per lane.

Secondary

All lanes : Goat Anti-Mouse IgG H&L (HRP) preadsorbed ([ab97040](#)) at 1/5000 dilution

Developed using the ECL technique.

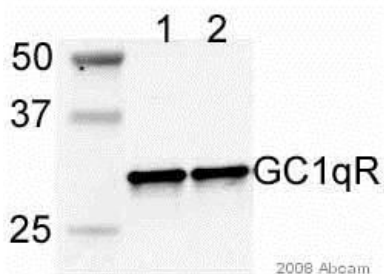
Performed under reducing conditions.

Predicted band size: 33 kDa

Observed band size: 30 kDa

Additional bands at: 68 kDa. We are unsure as to the identity of these extra bands.

Exposure time: 3 minutes



Western blot - Anti-GC1q R antibody [60.11] (ab24733)

This image is courtesy of an anonymous Abreview

Lane 1 : Mw standards

Lanes 2-3 : Anti-GC1q R antibody [60.11] (ab24733) at 1/2000 dilution

Lane 2 : 293T whole cell lysate at 20 µg

Lane 3 : Hela whole cell lysate at 20 µg

Secondary

Lanes 2-3 : Alexa Fluor® 680 conjugated goat anti-mouse

Developed using the ECL technique.

Performed under reducing conditions.

Predicted band size: 33 kDa

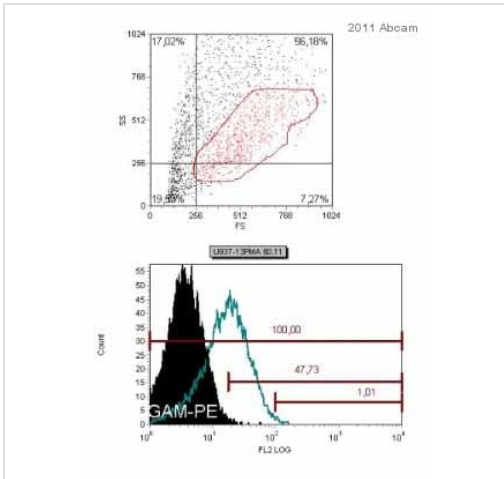
Observed band size: 32 kDa

Exposure time: 10 seconds

The blot was blocked with 5% milk for 1 hour at 25°C prior to incubating with the primary antibody for 13 hours at 4°C.

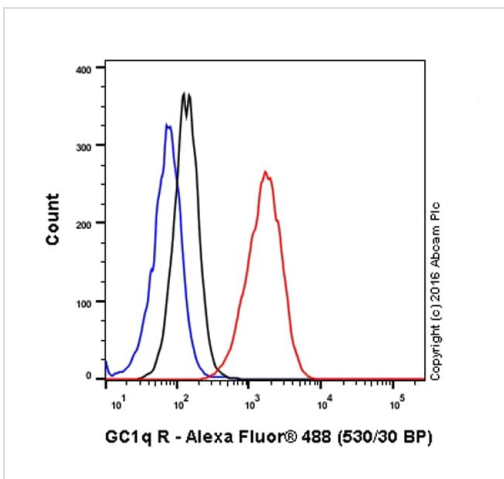
ab24733 used in Flow Cytometry.

U937 cells were cultured in RPMI 10% FCS, treated with PMA (5nM) and, 6-12 hours later, cells were harvested, spinned and resuspended to 200,000 cells in 100µl. ab24733 used at 10µg/ml for 30 minutes at 4°C. A phycoerythrin conjugated goat anti-mouse polyclonal was used as the secondary antibody at a 1/100 dilution.



Flow Cytometry (Intracellular) - Anti-GC1q R antibody [60.11] (ab24733)

Image courtesy of David Sanchez Martin by Abreview.



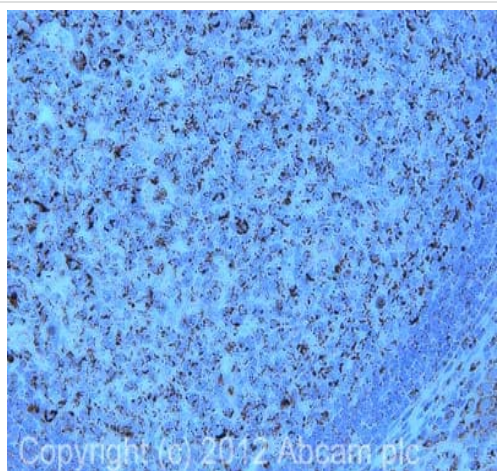
Flow Cytometry (Intracellular) - Anti-GC1q R antibody [60.11] (ab24733)

Overlay histogram showing HeLa cells stained with ab24733 (red line). The cells were fixed with 80% methanol (5 min) and then permeabilized with 0.1% PBS-Triton X-100 for 15 min. The cells were then incubated in 1x PBS / 10% normal goat serum to block non-specific protein-protein interactions followed by the antibody (ab24733, 0.5µg/1x10⁶ cells) for 30 min at 22°C. The secondary antibody used was Alexa Fluor® 488 goat anti-mouse IgG (H&L) (**ab150117**) at 1/4000 dilution for 30 min at 22°C.

Isotype control antibody (black line) was mouse IgG1 [15-6E10A7] (**ab170190**, 0.5µg/1x10⁶ cells) used under the same conditions. Unlabelled sample (blue line) was also used as a control.

Acquisition of >5,000 events were collected using a 50 mW Blue laser (488nm) and 530/30 bandpass filter.

This antibody gave a positive signal in HeLa cells fixed with 4% paraformaldehyde (10 min)/permeabilized with 0.1% PBS-Triton X-100 for 15 min used under the same conditions.



Immunohistochemistry (Formalin/PFA-fixed paraffin-embedded sections) - Anti-GC1q R antibody [60.11] (ab24733)

IHC image of ab24733 staining in human tonsil formalin fixed paraffin embedded tissue section, performed on a Leica Bond™ system using the standard protocol F. The section was pre-treated using heat mediated antigen retrieval with sodium citrate buffer (pH6, epitope retrieval solution 1) for 20 mins. The section was then incubated with ab24733, 10µg/ml, for 15 mins at room temperature and detected using an HRP conjugated compact polymer system. DAB was used as the chromogen. The section was then counterstained with haematoxylin and mounted with DPX.

For other IHC staining systems (automated and non-automated) customers should optimize variable parameters such as antigen retrieval conditions, primary antibody concentration and antibody incubation times.

Please note: All products are "FOR RESEARCH USE ONLY. NOT FOR USE IN DIAGNOSTIC PROCEDURES"

Our Abpromise to you: Quality guaranteed and expert technical support

- Replacement or refund for products not performing as stated on the datasheet
- Valid for 12 months from date of delivery
- Response to your inquiry within 24 hours
- We provide support in Chinese, English, French, German, Japanese and Spanish
- Extensive multi-media technical resources to help you
- We investigate all quality concerns to ensure our products perform to the highest standards

If the product does not perform as described on this datasheet, we will offer a refund or replacement. For full details of the Abpromise, please visit <https://www.abcam.co.jp/abpromise> or contact our technical team.

Terms and conditions

- Guarantee only valid for products bought direct from Abcam or one of our authorized distributors