


Anti-GAS2 antibody [EPR1742(2)] ab109762

リコンビナント **RabMAb**

4 References [画像数 3](#)

製品の概要

製品名	Anti-GAS2 antibody [EPR1742(2)]
製品の詳細	Rabbit monoclonal [EPR1742(2)] to GAS2
由来種	Rabbit
アプリケーション	適用あり: WB, IHC-P 適用なし: Flow Cyt or ICC/IF
種交差性	交差種: Human 交差が予測される動物種: Mouse 
免疫原	Synthetic peptide. This information is proprietary to Abcam and/or its suppliers.
ポジティブ・コントロール	HepG2, fetal liver, fetal kidney, and Jurkat lysates, Human stomach tissue
特記事項	<p>This product is a recombinant monoclonal antibody, which offers several advantages including:</p> <ul style="list-style-type: none"> - High batch-to-batch consistency and reproducibility - Improved sensitivity and specificity - Long-term security of supply - Animal-free production <p>For more information see here.</p> <p>Our RabMAb[®] technology is a patented hybridoma-based technology for making rabbit monoclonal antibodies. For details on our patents, please refer to RabMAb[®] patents.</p> <p>Rat: We have preliminary internal testing data to indicate this antibody may not react with this species. Please contact us for more information.</p>

製品の特性

製品の状態	Liquid
保存方法	Shipped at 4°C. Store at -20°C. Stable for 12 months at -20°C.
バッファー	<p>pH: 7.20</p> <p>Preservative: 0.05% Sodium azide</p> <p>Constituents: 0.1% BSA, 40% Glycerol (glycerin, glycerine), 9.85% Tris glycine, 50% Tissue culture supernatant</p>
精製度	Protein A purified

ポリ/モノ	モノクローナル
クローン名	EPR1742(2)
アイソタイプ	IgG

アプリケーション

The Abpromise guarantee **Abpromise保証は、**次のテスト済みアプリケーションにおけるab109762の使用に適用されます
アプリケーションノートには、推奨の開始希釈率がありますが、適切な希釈率につきましてはご検討ください。

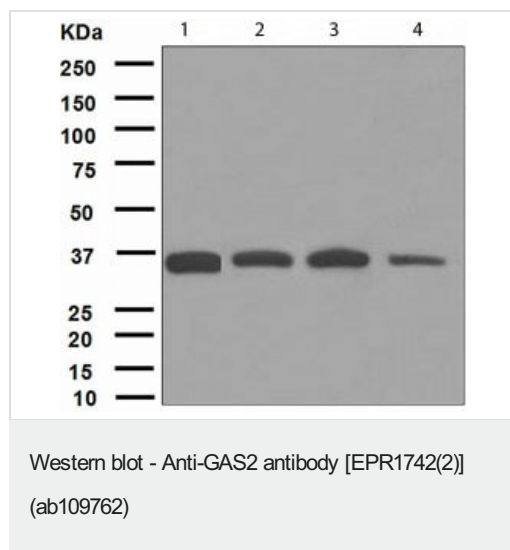
アプリケーション	Abreviews	特記事項
WB		1/1000 - 1/10000. Detects a band of approximately 35 kDa (predicted molecular weight: 35 kDa).
IHC-P		1/50 - 1/100. Perform heat mediated antigen retrieval with citrate buffer pH 6 before commencing with IHC staining protocol.

追加情報 Is unsuitable for Flow Cyt or ICC/IF.

ターゲット情報

機能	May play a role in apoptosis by acting as a cell death substrate for caspases. Is cleaved during apoptosis and the cleaved form induces dramatic rearrangements of the actin cytoskeleton and potent changes in the shape of the affected cells. May be involved in the membrane ruffling process.
組織特異性	Ubiquitously expressed with highest levels in liver, lung, and kidney. Not found in spleen.
配列類似性	Belongs to the GAS2 family. Contains 1 CH (calponin-homology) domain. Contains 1 GAR domain.
発生段階	Specifically expressed at growth arrest.
翻訳後修飾	Cleaved, during apoptosis, on a specific aspartic residue by caspases. Phosphorylated on serine residues during the G0-G1 transition phase.
細胞内局在	Cytoplasm > cytoskeleton. Membrane. Component of the microfilament system. Colocalizes with actin fibers at the cell border and along the stress fibers in growth-arrested fibroblasts. Mainly membrane-associated. When hyperphosphorylated, accumulates at membrane ruffles.

画像



All lanes : Anti-GAS2 antibody [EPR1742(2)] (ab109762) at 1/1000 dilution

Lane 1 : HepG2 lysate

Lane 2 : Human fetal liver lysate

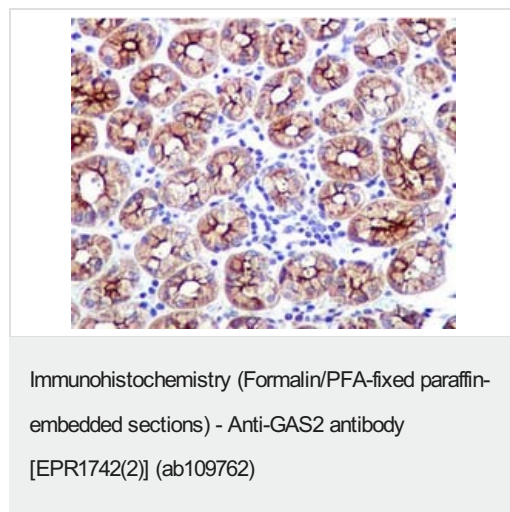
Lane 3 : Human fetal kidney lysate

Lane 4 : Jurkat lysate

Lysates/proteins at 10 µg per lane.

Predicted band size: 35 kDa

Observed band size: 35 kDa



Immunohistochemical analysis of paraffin-embedded Human stomach tissue using ab109762 at a dilution of 1/50.

Perform heat mediated antigen retrieval with citrate buffer pH 6 before commencing with IHC staining protocol.

Why choose a recombinant antibody?



Research with confidence
Consistent and reproducible results



Long-term and scalable supply
Recombinant technology



Success from the first experiment
Confirmed specificity



Ethical standards compliant
Animal-free production

Anti-GAS2 antibody [EPR1742(2)] (ab109762)

Please note: All products are "FOR RESEARCH USE ONLY. NOT FOR USE IN DIAGNOSTIC PROCEDURES"

Our Abpromise to you: Quality guaranteed and expert technical support

- Replacement or refund for products not performing as stated on the datasheet
- Valid for 12 months from date of delivery
- Response to your inquiry within 24 hours
- We provide support in Chinese, English, French, German, Japanese and Spanish
- Extensive multi-media technical resources to help you
- We investigate all quality concerns to ensure our products perform to the highest standards

If the product does not perform as described on this datasheet, we will offer a refund or replacement. For full details of the Abpromise, please visit <https://www.abcam.co.jp/abpromise> or contact our technical team.

Terms and conditions

- Guarantee only valid for products bought direct from Abcam or one of our authorized distributors