


# Anti-GAPDH antibody [mAbcam 9484] - Loading Control ab9484

★★★★★ [56 Abreviews](#) [821 References](#) [画像数 5](#)

### 製品の概要

製品名	Anti-GAPDH antibody [mAbcam 9484] - Loading Control
製品の詳細	Mouse monoclonal [mAbcam 9484] to GAPDH - Loading Control
由来種	Mouse
特異性	In western blot, this product typically gives a lower signal in rat lysates compared to human and mouse lysates.
アプリケーション	<b>適用あり:</b> WB, IHC-P
種交差性	<b>交差種:</b> Mouse, Rat, Chicken, Cow, Human, Pig, Xenopus laevis, Chinese hamster <b>交差が予測される動物種:</b> Rabbit, Dog, Cynomolgus monkey 
免疫原	Full length native protein (purified). This information is proprietary to Abcam and/or its suppliers.
ポジティブ・コントロール	WB: A431, Jurkat, HEK293, HeLa, NIH 3T3, PC-12, EBTr and CHO cell lysates; Rat brain, chicken and pig liver and Xenopus laevis embryo tissue lysates. IHC-P: Human liver tissue.
特記事項	<p>For Western blotting, do not use milk for blocking. Our labs have extensively tested the blocking conditions for this antibody and recommend using 5% BSA for 1 hour. The comparison data is shown in the images section.</p> <p>This antibody clone [mAbcam 9484] is manufactured by Abcam.</p> <p>If you require this antibody in a particular buffer formulation or a particular conjugate for your experiments, please contact <a href="mailto:orders@abcam.com">orders@abcam.com</a> or you can find further information <a href="#">here</a>.</p> <p>The Life Science industry has been in the grips of a reproducibility crisis for a number of years. Abcam is leading the way in addressing this with our range of recombinant monoclonal antibodies and knockout edited cell lines for gold-standard validation. Please check that this product meets your needs before purchasing.</p> <p>If you have any questions, special requirements or concerns, please send us an inquiry and/or contact our Support team ahead of purchase. Recommended alternatives for this product can be found below, along with publications, customer reviews and Q&amp;As</p>

### 製品の特性

製品の状態	Liquid
保存方法	Shipped at 4°C. Store at +4°C short term (1-2 weeks). Upon delivery aliquot. Store at -20°C or -80°C. Avoid freeze / thaw cycle.

バッファー	pH: 7.40 Preservative: 0.02% Sodium azide Constituents: PBS, 6.97% L-Arginine
精製度	IgG fraction
ポリ/モノ	モノクローナル
クローン名	mAbcam 9484
ミエローマ	Sp2/0-Ag14
アイソタイプ	IgG2b
軽鎖の種類	kappa

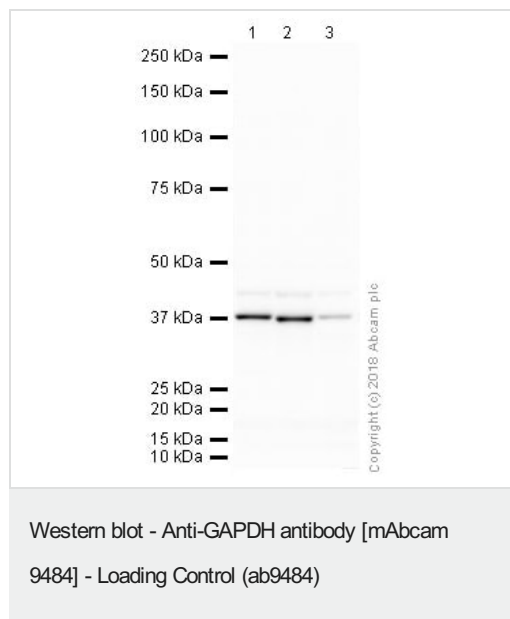
## アプリケーション

The Abpromise guarantee Abpromise保証は、次のテスト済みアプリケーションにおけるab9484の使用に適用されます  
アプリケーションノートには、推奨の開始希釈率がありますが、適切な希釈率につきましてはご検討ください。

アプリケーション	Abreviews	特記事項
WB	★★★★★ (53)	Use a concentration of 0.1 - 1 µg/ml. Predicted molecular weight: 36 kDa. Do not block with milk. Block with 5% BSA for 1 hour. Our labs have thoroughly investigated the blocking conditions for this antibody. We found that milk significantly decreases the signal and is therefore not a suitable blocking agent for this antibody (see images).
IHC-P		Use a concentration of 5 µg/ml. Perform heat mediated antigen retrieval before commencing with IHC staining protocol.

## ターゲット情報

機能	Has both glyceraldehyde-3-phosphate dehydrogenase and nitrosylase activities, thereby playing a role in glycolysis and nuclear functions, respectively. Participates in nuclear events including transcription, RNA transport, DNA replication and apoptosis. Nuclear functions are probably due to the nitrosylase activity that mediates cysteine S-nitrosylation of nuclear target proteins such as SIRT1, HDAC2 and PRKDC (By similarity). Glyceraldehyde-3-phosphate dehydrogenase is a key enzyme in glycolysis that catalyzes the first step of the pathway by converting D-glyceraldehyde 3-phosphate (G3P) into 3-phospho-D-glyceroyl phosphate.
パスウェイ	Carbohydrate degradation; glycolysis; pyruvate from D-glyceraldehyde 3-phosphate: step 1/5.
配列類似性	Belongs to the glyceraldehyde-3-phosphate dehydrogenase family.
翻訳後修飾	S-nitrosylation of Cys-152 leads to interaction with SIAH1, followed by translocation to the nucleus. ISGylated.
細胞内局在	Cytoplasm > cytosol. Nucleus. Cytoplasm > perinuclear region. Membrane. Translocates to the nucleus following S-nitrosylation and interaction with SIAH1, which contains a nuclear localization signal (By similarity). Postnuclear and Perinuclear regions.



**All lanes :** Anti-GAPDH antibody [mAbcam 9484] - Loading Control (ab9484) at 1 µg/ml

**Lane 1 :** HeLa Whole Cell Lysate

**Lane 2 :** NIH 3T3 Whole Cell Lysate

**Lane 3 :** PC12 Whole Cell Lysate

Lysates/proteins at 20 µg per lane.

### Secondary

**All lanes :** Goat polyclonal to Mouse IgG - H&L - Pre-Adsorbed (HRP) at 1/5000 dilution

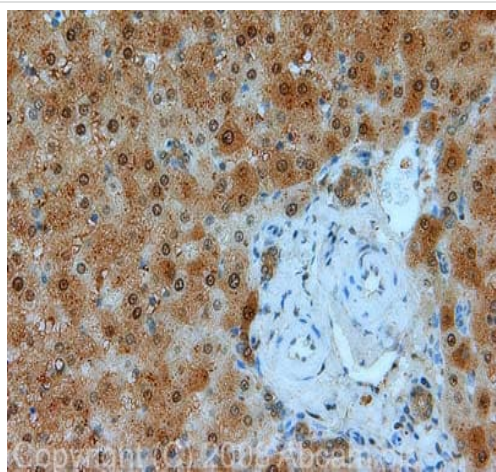
Developed using the ECL technique.

Performed under reducing conditions.

**Predicted band size:** 36 kDa

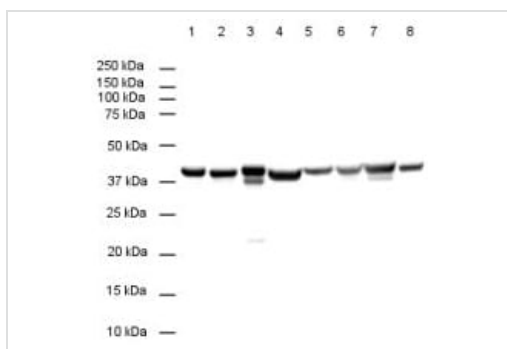
**Exposure time:** 1 minute

This blot was produced using a 4-12% Bis-tris gel under the MOPS buffer system. The gel was run at 200V for 50 minutes before being transferred onto a Nitrocellulose membrane at 30V for 70 minutes. The membrane was then blocked for an hour using 2% Bovine Serum Albumin before being incubated with ab9484 overnight at 4°C. Antibody binding was detected using an anti-rabbit antibody conjugated to HRP, and visualised using ECL development solution **ab133406**



Immunohistochemistry (Formalin/PFA-fixed paraffin-embedded sections) - Anti-GAPDH antibody  
[mAbcam 9484] - Loading Control (ab9484)

IHC image of GAPDH staining in human liver FFPE section, performed on a Bond™ system using the standard protocol F. The section was pre-treated using heat mediated antigen retrieval with sodium citrate buffer (pH6, epitope retrieval solution 1) for 20 mins. The section was then incubated with ab9484, 5µg/ml, for 8 mins at room temperature and detected using an HRP conjugated compact polymer system. DAB was used as the chromogen. The section was then counterstained with haematoxylin and mounted with DPX.



Western blot - Anti-GAPDH antibody [mAbcam 9484] - Loading Control (ab9484)

**All lanes :** Anti-GAPDH antibody [mAbcam 9484] - Loading Control (ab9484) at 1/5000 dilution

**Lane 1 :** Hela whole cell (Human)

**Lane 2 :** 3T3 cell (Mouse)

**Lane 3 :** Rat brain

**Lane 4 :** Xenopus laevis embryo

**Lane 5 :** Chicken Liver

**Lane 6 :** EBTr cell (Cow)

**Lane 7 :** CHO cell (Chinese hamster)

**Lane 8 :** Pig liver

### Secondary

**All lanes :** Rabbit Anti-Mouse IgG H&L (HRP) ([ab6728](#)) at 1/5000 dilution

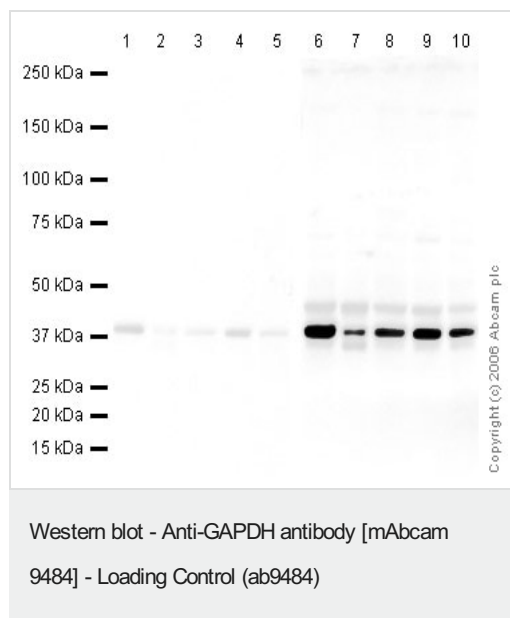
Performed under reducing conditions.

**Predicted band size:** 36 kDa

**Observed band size:** 40 kDa

**Exposure time:** 10 seconds

The membrane was blocked in 5% BSA in TBST for 1 hour, then incubated for 1 hour in primary antibody diluted in TBST.



**Lanes 1-5 :** Anti-GAPDH antibody [mAbcam 9484] - Loading

Control (ab9484) at 1/1000 dilution (Blocked in 5% milk)

**Lanes 6-10 :** Anti-GAPDH antibody [mAbcam 9484] - Loading

Control (ab9484) at 1/1000 dilution (Blocked in 5% BSA)

**Lanes 1 & 6 :** HeLa (Human epithelial carcinoma cell line) Nuclear Lysate

**Lanes 2 & 7 :** HeLa (Human epithelial carcinoma cell line) Whole Cell Lysate

**Lanes 3 & 8 :** A-431 whole cell lysate ([ab7909](#))

**Lanes 4 & 9 :** Jurkat whole cell lysate ([ab7899](#))

**Lanes 5 & 10 :** HEK-293 whole cell lysate ([ab7902](#))

Lysates/proteins at 20 µg per lane.

### Secondary

**Lanes 1-5 :** Goat anti-Mouse (HRP conjugated) at 1/5000 dilution

**Lanes 6-10 :** Goat anti-Mouse (HRP conjugated) at 1/5000 dilution

**Predicted band size:** 36 kDa

**Observed band size:** 40 kDa

The membrane 1-5 was blocked in 5% milk (1 hour). The membrane 6-10 was blocked in 5% BSA (1 hour). Milk is not a suitable blocking agent and significantly decreases the signal on the membrane.



Anti-GAPDH antibody [mAbcam 9484] - Loading Control (ab9484) at 0.5 µg/ml + HeLa cell lysate

### Secondary

Goat Anti-Mouse IgG H&L (HRP) ([ab6789](#)) at 1/5000 dilution

Developed using the ECL technique.

Performed under non-reducing conditions.

**Predicted band size:** 36 kDa

**Exposure time:** 30 seconds

**Please note:** All products are "FOR RESEARCH USE ONLY. NOT FOR USE IN DIAGNOSTIC PROCEDURES"

### **Our Abpromise to you: Quality guaranteed and expert technical support**

---

- Replacement or refund for products not performing as stated on the datasheet
- Valid for 12 months from date of delivery
- Response to your inquiry within 24 hours
  
- We provide support in Chinese, English, French, German, Japanese and Spanish
- Extensive multi-media technical resources to help you
- We investigate all quality concerns to ensure our products perform to the highest standards

If the product does not perform as described on this datasheet, we will offer a refund or replacement. For full details of the Abpromise, please visit <https://www.abcam.co.jp/abpromise> or contact our technical team.

### **Terms and conditions**

---

- Guarantee only valid for products bought direct from Abcam or one of our authorized distributors