

Anti-GAPDH antibody - Loading Control ab9483

★★★★★ **7 Abreviews** **143 References** 画像数 **2**

製品の概要

製品名	Anti-GAPDH antibody - Loading Control
製品の詳細	Goat polyclonal to GAPDH - Loading Control
由来種	Goat
アプリケーション	適用あり: WB, ICC/IF
種交差性	交差種: Mouse, Human
免疫原	Full length native protein (purified) corresponding to Human GAPDH.
ポジティブ・コントロール	This antibody gave a positive signal in the following whole cell lysates: HeLa; NIH3T3. This antibody also gave a positive signal in Human brain tissue lysate.
特記事項	<p>The Life Science industry has been in the grips of a reproducibility crisis for a number of years. Abcam is leading the way in addressing this with our range of recombinant monoclonal antibodies and knockout edited cell lines for gold-standard validation. Please check that this product meets your needs before purchasing.</p> <p>If you have any questions, special requirements or concerns, please send us an inquiry and/or contact our Support team ahead of purchase. Recommended alternatives for this product can be found below, along with publications, customer reviews and Q&As</p>

製品の特性

製品の状態	Liquid
保存方法	Shipped at 4°C. Store at +4°C short term (1-2 weeks). Upon delivery aliquot. Store at -20°C or -80°C. Avoid freeze / thaw cycle.
バッファー	Preservative: 0.02% Sodium azide
	This product may contain up to 3% BSA depending on the batch. For specific batch formulations please contact us.
精製度	Immunogen affinity purified
ポリ/モノ	ポリクローナル
アイソタイプ	IgG

アプリケーション

The Abpromise guarantee

Abpromise保証は、次のテスト済みアプリケーションにおけるab9483の使用に適用されます

アプリケーションノートには、推奨の開始希釈率がありますが、適切な希釈率につきましてはご確認ください。

アプリケーション	Abreviews	特記事項
WB	★★★★★ (5)	1/1000. Detects a band of approximately 37 kDa (predicted molecular weight: 35.8 kDa).
ICC/IF	★★★★★ (1)	Use a concentration of 1 µg/ml.

ターゲット情報

機能

Has both glyceraldehyde-3-phosphate dehydrogenase and nitrosylase activities, thereby playing a role in glycolysis and nuclear functions, respectively. Participates in nuclear events including transcription, RNA transport, DNA replication and apoptosis. Nuclear functions are probably due to the nitrosylase activity that mediates cysteine S-nitrosylation of nuclear target proteins such as SIRT1, HDAC2 and PRKDC (By similarity). Glyceraldehyde-3-phosphate dehydrogenase is a key enzyme in glycolysis that catalyzes the first step of the pathway by converting D-glyceraldehyde 3-phosphate (G3P) into 3-phospho-D-glyceroyl phosphate.

パスウェイ

Carbohydrate degradation; glycolysis; pyruvate from D-glyceraldehyde 3-phosphate: step 1/5.

配列類似性

Belongs to the glyceraldehyde-3-phosphate dehydrogenase family.

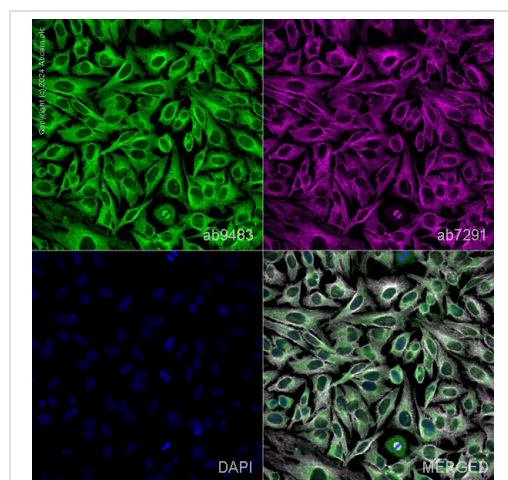
翻訳後修飾

S-nitrosylation of Cys-152 leads to interaction with SIAH1, followed by translocation to the nucleus.
ISGylated.

細胞内局在

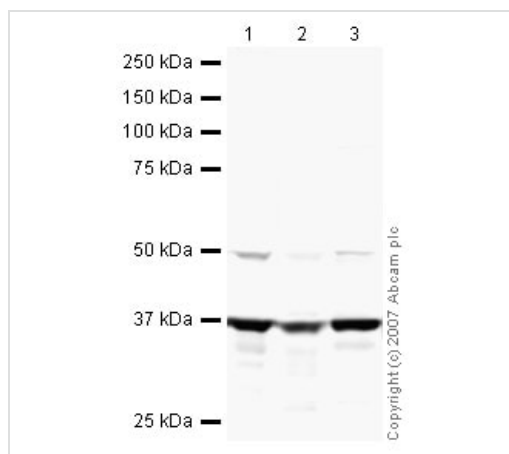
Cytoplasm > cytosol. Nucleus. Cytoplasm > perinuclear region. Membrane. Translocates to the nucleus following S-nitrosylation and interaction with SIAH1, which contains a nuclear localization signal (By similarity). Postnuclear and Perinuclear regions.

画像



Immunocytochemistry/ Immunofluorescence - Anti-GAPDH antibody - Loading Control (ab9483)

ab9483 staining GAPDH in HeLa cells. The cells were fixed with 100% methanol (5 min), permeabilized with 0.1% PBS-Triton X-100 for 5 minutes and then blocked with 1% BSA/10% normal goat serum/0.3M glycine in 0.1%PBS-Tween for 1h. The cells were then incubated overnight at 4°C with ab9483 at 1µg/ml and **ab7291**, Mouse monoclonal [DM1A] to alpha Tubulin - Loading Control. Cells were then incubated with **ab150129**, Donkey Anti-Goat IgG H&L (Alexa Fluor (Alexa Fluor® 488)) at 1/1000 dilution (shown in green) and **ab150120**, Goat polyclonal Secondary Antibody to Mouse IgG - H&L (Alexa Fluor® 594), pre-adsorbed at 1/1000 dilution (shown in pseudocolour magenta). Nuclear DNA was labelled with DAPI (shown in blue). Also suitable in cells fixed with 4% paraformaldehyde (10 min). Image was acquired with a high-content analyser (Operetta CLS, Perkin Elmer) and a maximum intensity projection of confocal sections is shown.



Western blot - Anti-GAPDH antibody - Loading Control (ab9483)

All lanes : Anti-GAPDH antibody - Loading Control (ab9483) at 1 µg/ml

Lane 1 : HeLa (Human epithelial carcinoma cell line) Whole Cell Lysate

Lane 2 : NIH 3T3 (Mouse embryonic fibroblast cell line) Whole Cell Lysate

Lane 3 : Human brain tissue lysate - total protein ([ab29466](#))

Lysates/proteins at 20 µg per lane.

Secondary

All lanes : Rabbit polyclonal to Goat IgG (Alexa Fluor® 680) at 1/10000 dilution

Performed under reducing conditions.

Predicted band size: 35.8 kDa

Observed band size: 37 kDa

Please note: All products are "FOR RESEARCH USE ONLY. NOT FOR USE IN DIAGNOSTIC PROCEDURES"

Our Abpromise to you: Quality guaranteed and expert technical support

- Replacement or refund for products not performing as stated on the datasheet
- Valid for 12 months from date of delivery
- Response to your inquiry within 24 hours
- We provide support in Chinese, English, French, German, Japanese and Spanish
- Extensive multi-media technical resources to help you
- We investigate all quality concerns to ensure our products perform to the highest standards

If the product does not perform as described on this datasheet, we will offer a refund or replacement. For full details of the Abpromise, please visit <https://www.abcam.co.jp/abpromise> or contact our technical team.

Terms and conditions

- Guarantee only valid for products bought direct from Abcam or one of our authorized distributors