


# Anti-GAPDH antibody [GA1R] - Loading Control ab125247

★★★★★ [7 Abreviews](#) [116 References](#) [画像数 2](#)

### 製品の概要

製品名	Anti-GAPDH antibody [GA1R] - Loading Control
製品の詳細	Mouse monoclonal [GA1R] to GAPDH - Loading Control
由来種	Mouse
特異性	ab125247 recognizes native and denatured forms of GAPDH.
アプリケーション	<b>適用あり:</b> WB
種交差性	<b>交差種:</b> Mouse, Rat, Rabbit, Chicken, Hamster, Human, Saccharomyces cerevisiae, Escherichia coli, Spodoptera frugiperda (SF9 cells) <b>交差が予測される動物種:</b> a wide range of other species 
免疫原	Recombinant full length protein corresponding to Rabbit GAPDH.
ポジティブ・コントロール	Human, Mouse, Rat, Rabbit, Chicken and Hamster tissue lysates; BL-21 bacteria, Sf9 insect and Saccharomyces cerevisiae cell lysates
特記事項	<p>Store at 4°C (add 0.05% NaN3) for several days to weeks.</p> <p>This product was changed from ascites to tissue culture supernatant on 5<sup>th</sup> February 2018. Please note that the dilutions may need to be adjusted accordingly. If you have any questions, please do not hesitate to contact our scientific support team.</p> <p>The Life Science industry has been in the grips of a reproducibility crisis for a number of years. Abcam is leading the way in addressing this with our range of recombinant monoclonal antibodies and knockout edited cell lines for gold-standard validation. Please check that this product meets your needs before purchasing.</p> <p>If you have any questions, special requirements or concerns, please send us an inquiry and/or contact our Support team ahead of purchase. Recommended alternatives for this product can be found below, along with publications, customer reviews and Q&amp;As</p>

### 製品の特性

製品の状態	Liquid
保存方法	Shipped at 4°C. Store at +4°C short term (1-2 weeks). Upon delivery aliquot. Store at -20°C long term. Avoid freeze / thaw cycle.
バッファー	<p>pH: 7.20</p> <p>Preservative: 0.05% Sodium azide</p> <p>Constituent: 99% PBS</p>

精製度	Protein A purified
特記事項(精製)	Protein A affinity chromatography from TCS
ポリ/モノ	モノクローナル
クローン名	GA1R
アイソタイプ	IgG1

## アプリケーション

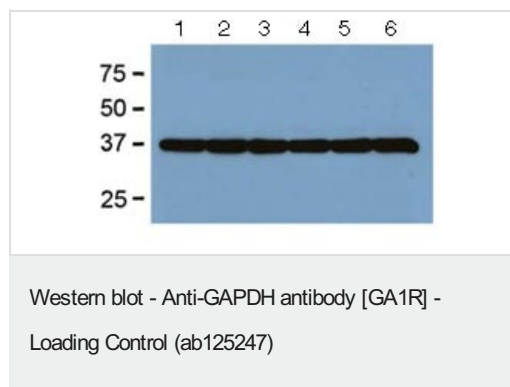
**The Abpromise guarantee** Abpromise保証は、次のテスト済みアプリケーションにおけるab125247の使用に適用されます  
 アプリケーションノートには、推奨の開始希釈率がありますが、適切な希釈率につきましてはご確認ください。

アプリケーション	Abreviews	特記事項
WB	★★★★★ (7)	1/1000 - 1/10000. Detects a band of approximately 37 kDa (predicted molecular weight: 36 kDa). with ECL.

## ターゲット情報

機能	Has both glyceraldehyde-3-phosphate dehydrogenase and nitrosylase activities, thereby playing a role in glycolysis and nuclear functions, respectively. Participates in nuclear events including transcription, RNA transport, DNA replication and apoptosis. Nuclear functions are probably due to the nitrosylase activity that mediates cysteine S-nitrosylation of nuclear target proteins such as SIRT1, HDAC2 and PRKDC (By similarity). Glyceraldehyde-3-phosphate dehydrogenase is a key enzyme in glycolysis that catalyzes the first step of the pathway by converting D-glyceraldehyde 3-phosphate (G3P) into 3-phospho-D-glyceroyl phosphate.
パスウェイ	Carbohydrate degradation; glycolysis; pyruvate from D-glyceraldehyde 3-phosphate: step 1/5.
配列類似性	Belongs to the glyceraldehyde-3-phosphate dehydrogenase family.
翻訳後修飾	S-nitrosylation of Cys-152 leads to interaction with SIAH1, followed by translocation to the nucleus. ISGylated.
細胞内局在	Cytoplasm > cytosol. Nucleus. Cytoplasm > perinuclear region. Membrane. Translocates to the nucleus following S-nitrosylation and interaction with SIAH1, which contains a nuclear localization signal (By similarity). Postnuclear and Perinuclear regions.

## 画像



**All lanes :** Anti-GAPDH antibody [GA1R] - Loading Control (ab125247) at 1/2000 dilution

**Lane 1 :** Human tissue lysate

**Lane 2 :** Mouse tissue lysate

**Lane 3 :** Rat tissue lysate

**Lane 4 :** Rabbit tissue lysate

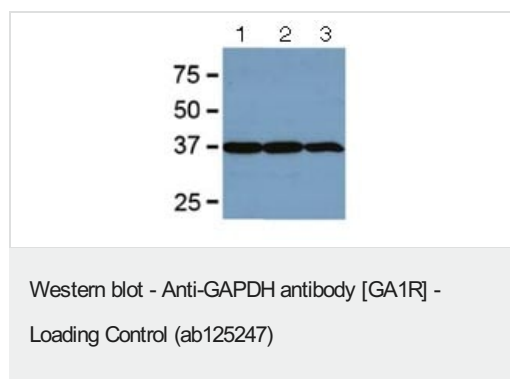
**Lane 5 :** Chicken tissue lysate

**Lane 6 :** Hamster tissue lysate

Lysates/proteins at 5 µg per lane.

Developed using the ECL technique.

**Predicted band size:** 36 kDa



**All lanes :** Anti-GAPDH antibody [GA1R] - Loading Control (ab125247) at 1/2000 dilution

**Lane 1 :** BL21 bacterial lysate

**Lane 2 :** Sf9 insect lysate

**Lane 3 :** Saccharomyces cerevisiae lysate

Lysates/proteins at 5 µg per lane.

Developed using the ECL technique.

**Predicted band size:** 36 kDa

**Please note:** All products are "FOR RESEARCH USE ONLY. NOT FOR USE IN DIAGNOSTIC PROCEDURES"

### Our Abpromise to you: Quality guaranteed and expert technical support

- Replacement or refund for products not performing as stated on the datasheet
- Valid for 12 months from date of delivery
- Response to your inquiry within 24 hours
- We provide support in Chinese, English, French, German, Japanese and Spanish
- Extensive multi-media technical resources to help you
- We investigate all quality concerns to ensure our products perform to the highest standards

If the product does not perform as described on this datasheet, we will offer a refund or replacement. For full details of the Abpromise, please visit <https://www.abcam.co.jp/abpromise> or contact our technical team.

## Terms and conditions

---

- Guarantee only valid for products bought direct from Abcam or one of our authorized distributors