

# Anti-gamma Tubulin antibody [GTU-88] - Centrosome Marker ab11316

★★★★★ 17 Abreviews 166 References 画像数 4

### 製品の概要

製品名	Anti-gamma Tubulin antibody [GTU-88] - Centrosome Marker
製品の詳細	Mouse monoclonal [GTU-88] to gamma Tubulin - Centrosome Marker
由来種	Mouse
アプリケーション	適用あり: ICC/IF, WB
種交差性	交差種: Mouse, Chicken, Cow, Dog, Human, African green monkey, Chinese hamster
免疫原	Synthetic peptide conjugated to KLH, corresponding to N-terminal amino acids 38-53 of gamma Tubulin.
特記事項	<p><i>This product was changed from ascites to tissue culture supernatant on 18<sup>th</sup> October 2016. The following lots are from ascites and are still in stock as of 18th October 2016 (GR286332 and GR225007). Lot numbers higher than GR286332 will be from tissue culture supernatant. Please note that dilutions may need to be adjusted accordingly.</i></p> <p>Storage in frost-free freezers is not recommended. If slight turbidity occurs upon prolonged storage, clarify the solution by centrifugation before use.</p> <p>The Life Science industry has been in the grips of a reproducibility crisis for a number of years. Abcam is leading the way in addressing this with our range of recombinant monoclonal antibodies and knockout edited cell lines for gold-standard validation. Please check that this product meets your needs before purchasing.</p> <p>If you have any questions, special requirements or concerns, please send us an inquiry and/or contact our Support team ahead of purchase. Recommended alternatives for this product can be found below, along with publications, customer reviews and Q&amp;As</p>

### 製品の特性

製品の状態	Liquid
保存方法	Shipped at 4°C. Upon delivery aliquot and store at -20°C or -80°C. Avoid repeated freeze / thaw cycles.
バッファー	<p>pH: 7.40</p> <p>Preservative: 0.097% Sodium azide</p> <p>Constituent: PBS</p>

精製度	Proprietary Purification
特記事項(精製)	Purified from Tissue Culture Supernatant.
ポリ/モノ	モノクローナル
クローン名	GTU-88
アイソタイプ	IgG1

## アプリケーション

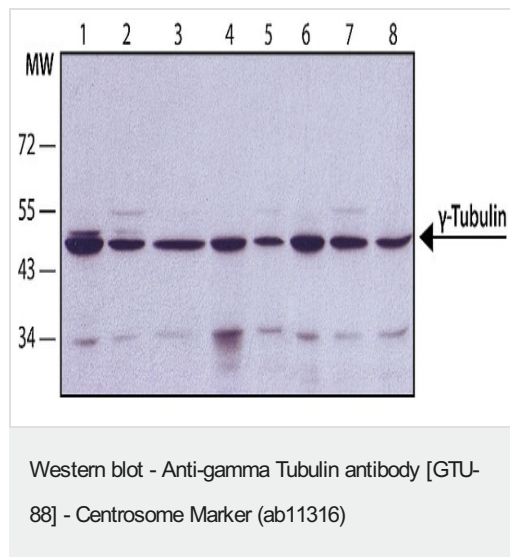
**The Abpromise guarantee**      **Abpromise保証は、次のテスト済みアプリケーションにおけるab11316の使用に適用されます**  
 アプリケーションノートには、推奨の開始希釈率がありますが、適切な希釈率につきましてはご検討ください。

アプリケーション	Abreviews	特記事項
ICC/IF	★★★★★ (10)	Use a concentration of 1 - 2 µg/ml.
WB	★★★★★ (6)	1/10000. Detects a band of approximately 48 kDa (predicted molecular weight: 48 kDa).

## ターゲット情報

機能	Tubulin is the major constituent of microtubules. Gamma tubulin is found at microtubule organizing centers (MTOC) such as the spindle poles or the centrosome. Pericentriolar matrix component that regulates alpha/beta tubulin minus-end nucleation, centrosome duplication and spindle formation.
配列類似性	Belongs to the tubulin family.
翻訳後修飾	Phosphorylation at Ser-131 by BRSK1 regulates centrosome duplication, possibly by mediating relocation of gamma-tubulin and its associated proteins from the cytoplasm to the centrosome.
細胞内局在	Cytoplasm > cytoskeleton > centrosome.

## 画像



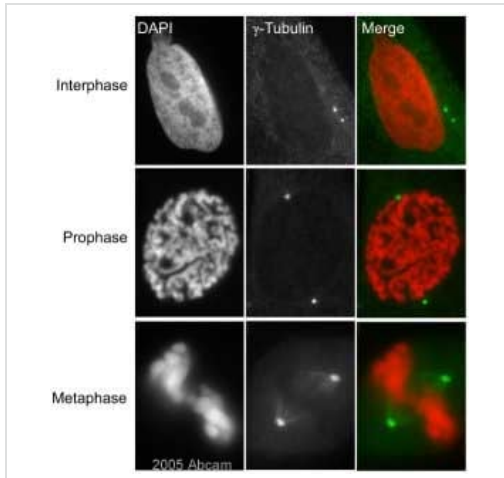
**All lanes** : Anti-gamma Tubulin antibody [GTU-88] - Centrosome Marker (ab11316) at 1/10000 dilution

- Lane 1** : HeLa cell line lysates
- Lane 2** : U87 cell line lysates
- Lane 3** : COS7 cell line lysates
- Lane 4** : P19 cell line lysates
- Lane 5** : Hepa1-6 cell line lysates
- Lane 6** : CHO cell line lysates
- Lane 7** : MDBK cell line lysates
- Lane 8** : MDCK cell line lysates

## Secondary

**All lanes :** Goat Anti-Mouse IgG-Peroxidase

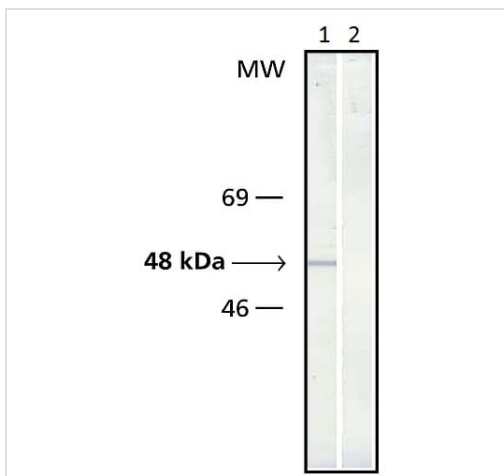
**Predicted band size:** 48 kDa



Immunocytochemistry/ Immunofluorescence - Anti-gamma Tubulin antibody [GTU-88] - Centrosome Marker (ab11316)

ab11316 at a 1/200 dilution staining HeLa cells by Immunocytochemistry. The antibody was incubated with the cells for 30 minutes and then detected using a Cy3 conjugated Goat anti-Mouse (H+L) (green stain). The antibody recognizes gamma-tubulin located at the centrosomes in metaphase and also faintly recognizes the centrosome association during interphase.

This image is courtesy of an Abreview submitted by **Kirk McManus** on **2 December 2005**.



Western blot - Anti-gamma Tubulin antibody [GTU-88] - Centrosome Marker (ab11316)

**Lane 1 :** Anti-gamma Tubulin antibody [GTU-88] - Centrosome Marker (ab11316) at 1/20000 dilution

**Lane 2 :** Negative control (secondary antibody only)

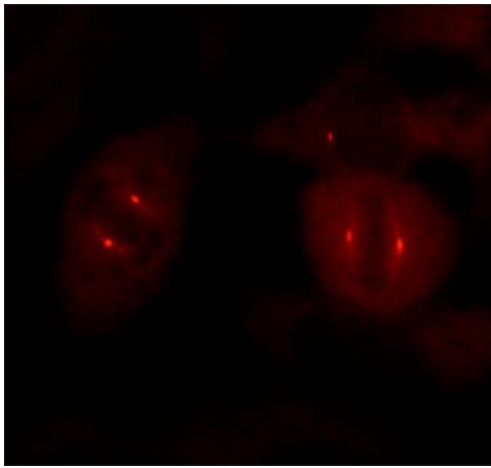
**All lanes :** Whole cell extract of chicken fibroblasts

## Secondary

**All lanes :** Alkaline Phosphatase conjugated goat anti-mouse IgG

**Predicted band size:** 48 kDa

**Observed band size:** 48 kDa



Immunocytochemistry/ Immunofluorescence - Anti-gamma Tubulin antibody [GTU-88] - Centrosome Marker (ab11316)

Immunocytochemistry/Immunofluorescence analysis of HeLa cells labelling gamma Tubulin using ab11316 at a dilution of 1/5000. Cells were permeabilized with methanol and followed by fixation with acetone. A Cy3-conjugated goat anti-mouse IgG was used as the secondary antibody.

**Please note:** All products are "FOR RESEARCH USE ONLY. NOT FOR USE IN DIAGNOSTIC PROCEDURES"

### Our Abpromise to you: Quality guaranteed and expert technical support

---

- Replacement or refund for products not performing as stated on the datasheet
- Valid for 12 months from date of delivery
- Response to your inquiry within 24 hours
- We provide support in Chinese, English, French, German, Japanese and Spanish
- Extensive multi-media technical resources to help you
- We investigate all quality concerns to ensure our products perform to the highest standards

If the product does not perform as described on this datasheet, we will offer a refund or replacement. For full details of the Abpromise, please visit <https://www.abcam.co.jp/abpromise> or contact our technical team.

### Terms and conditions

---

- Guarantee only valid for products bought direct from Abcam or one of our authorized distributors