

Anti-gamma Synuclein/SNCG antibody [EP1539Y] - BSA and Azide free ab247328

KO 評価済 リコンビナント RabMAb

画像数 2

製品の概要

製品名	Anti-gamma Synuclein/SNCG antibody [EP1539Y] - BSA and Azide free
製品の詳細	Rabbit monoclonal [EP1539Y] to gamma Synuclein/SNCG - BSA and Azide free
由来種	Rabbit
アプリケーション	適用あり: IHC-P, WB 適用なし: Flow Cyt or ICC/IF
種交差性	交差種: Human 非交差種: Mouse, Rat
免疫原	Synthetic peptide. This information is proprietary to Abcam and/or its suppliers.
ポジティブ・コントロール	WB: HeLa and SK-BR-3 cell lysates.
特記事項	<p>ab247328 is the carrier-free version of ab52633.</p> <p>Our carrier-free antibodies are typically supplied in a PBS-only formulation, purified and free of BSA, sodium azide and glycerol. The carrier-free buffer and high concentration allow for increased conjugation efficiency.</p> <p>This conjugation-ready format is designed for use with fluorochromes, metal isotopes, oligonucleotides, and enzymes, which makes them ideal for antibody labelling, functional and cell-based assays, flow-based assays (e.g. mass cytometry) and Multiplex Imaging applications.</p> <p>Use our conjugation kits for antibody conjugates that are ready-to-use in as little as 20 minutes with <1 minute hands-on-time and 100% antibody recovery: available for fluorescent dyes, HRP, biotin and gold.</p> <p>This product is compatible with the Maxpar[®] Antibody Labeling Kit from Fluidigm, without the need for antibody preparation. Maxpar[®] is a trademark of Fluidigm Canada Inc.</p> <p>This product is a recombinant monoclonal antibody, which offers several advantages including:</p> <ul style="list-style-type: none"> - High batch-to-batch consistency and reproducibility - Improved sensitivity and specificity - Long-term security of supply - Animal-free production <p>For more information see here.</p> <p>Our RabMAb[®] technology is a patented hybridoma-based technology for making rabbit</p>

monoclonal antibodies. For details on our patents, please refer to [RabMAb® patents](#).

Mouse: We have preliminary internal testing data to indicate this antibody may not react with this species. Please contact us for more information.

製品の特性

製品の状態	Liquid
保存方法	Shipped at 4°C. Store at +4°C. Do Not Freeze.
バッファー	pH: 7.2 Constituent: PBS
キャリア・フリー	はい
精製度	Protein A purified
ポリ/モノ	モノクローナル
クローン名	EP1539Y
アイソタイプ	IgG

アプリケーション

The Abpromise guarantee **Abpromise保証は、次のテスト済みアプリケーションにおけるab247328の使用に適用されます**
アプリケーションノートには、推奨の開始希釈率がありますが、適切な希釈率につきましてはご検討ください。

アプリケーション	Abreviews	特記事項
IHC-P		Use at an assay dependent concentration. Perform heat mediated antigen retrieval with citrate buffer pH 6 before commencing with IHC staining protocol.
WB		Use at an assay dependent concentration. Detects a band of approximately 16 kDa (predicted molecular weight: 13 kDa).

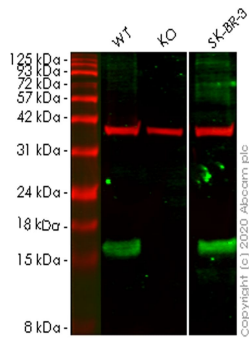
追加情報 Is unsuitable for Flow Cyt or ICC/IF.

ターゲット情報

機能	Plays a role in neurofilament network integrity. May be involved in modulating axonal architecture during development and in the adult. In vitro, increases the susceptibility of neurofilament-H to calcium-dependent proteases (By similarity). May also function in modulating the keratin network in skin. Activates the MAPK and Elk-1 signal transduction pathway.
組織特異性	Highly expressed in brain, particularly in the substantia nigra. Also expressed in the corpus callosum, heart, skeletal muscle, ovary, testis, colon and spleen. Weak expression in pancreas, kidney and lung.
配列類似性	Belongs to the synuclein family.
翻訳後修飾	Phosphorylated. Phosphorylation by GRK5 appears to occur on residues distinct from the residue phosphorylated by other kinases.
細胞内局在	Cytoplasm > perinuclear region. Cytoplasm > cytoskeleton > centrosome. Cytoplasm >

cytoskeleton > spindle. Associated with centrosomes in several interphase cells. In mitotic cells, localized to the poles of the spindle.

画像



Western blot - Anti-gamma Synuclein/SNCG antibody [EP1539Y] - BSA and Azide free (ab247328)

All lanes : Anti-gamma Synuclein/SNCG antibody [EP1539Y] ([ab52633](#)) at 1/1000 dilution

Lane 1 : Wild-type HeLa cell lysate

Lane 2 : SNCG knockout HeLa cell lysate

Lane 3 : SK-BR-3 cell lysate

Lysates/proteins at 20 µg per lane.

Secondary

All lanes : Goat anti-Rabbit IgG H&L (IRDye® 800CW) preadsorbed ([ab216773](#)) at 1/10000 dilution

Predicted band size: 13 kDa

Observed band size: 16 kDa

This data was developed using the same antibody clone in a different buffer formulation ([ab52633](#)).

Lanes 1-3: Merged signal (red and green). Green - [ab52633](#) observed at 16 kDa. Red - loading control [ab8245](#) observed at 36 kDa.

[ab52633](#) Anti-gamma Synuclein/SNCG antibody [EP1539Y] was shown to specifically react with gamma Synuclein/SNCG antibody in wild-type HeLa cells. Loss of signal was observed when knockout cell line [ab265623](#) (knockout cell lysate [ab257694](#)) was used. Wild-type and gamma Synuclein/SNCG knockout samples were subjected to SDS-PAGE. [ab52633](#) and Anti-GAPDH antibody [6C5] - Loading Control ([ab8245](#)) were incubated overnight at 4°C at 1 in 1000 dilution and 1 in 20000 dilution respectively. Blots were developed with Goat anti-Rabbit IgG H&L (IRDye® 800CW) preadsorbed ([ab216773](#)) and Goat anti-Mouse IgG H&L (IRDye® 680RD) preadsorbed ([ab216776](#)) secondary antibodies at 1 in 20000 dilution for 1 hour at room temperature before imaging.

Why choose a recombinant antibody?



Research with confidence
Consistent and reproducible results



Long-term and scalable supply
Recombinant technology



Success from the first experiment
Confirmed specificity



Ethical standards compliant
Animal-free production

Anti-gamma Synuclein/SNCG antibody [EP1539Y] -
BSA and Azide free (ab247328)

Please note: All products are "FOR RESEARCH USE ONLY. NOT FOR USE IN DIAGNOSTIC PROCEDURES"

Our Abpromise to you: Quality guaranteed and expert technical support

- Replacement or refund for products not performing as stated on the datasheet
- Valid for 12 months from date of delivery
- Response to your inquiry within 24 hours
- We provide support in Chinese, English, French, German, Japanese and Spanish
- Extensive multi-media technical resources to help you
- We investigate all quality concerns to ensure our products perform to the highest standards

If the product does not perform as described on this datasheet, we will offer a refund or replacement. For full details of the Abpromise, please visit <https://www.abcam.co.jp/abpromise> or contact our technical team.

Terms and conditions

- Guarantee only valid for products bought direct from Abcam or one of our authorized distributors