

Anti-gamma Synuclein/SNCG antibody ab55424

★★★★★ [9 Abreviews](#) [22 References](#) [画像数 2](#)

製品の概要

製品名	Anti-gamma Synuclein/SNCG antibody
製品の詳細	Rabbit polyclonal to gamma Synuclein/SNCG
由来種	Rabbit
アプリケーション	適用あり: ELISA, ICC/IF, IHC-Fr, WB, IHC-P
種交差性	交差種: Mouse, Rat, Human
免疫原	Synthetic peptide. This information is proprietary to Abcam and/or its suppliers.
特記事項	<p>The Life Science industry has been in the grips of a reproducibility crisis for a number of years. Abcam is leading the way in addressing this with our range of recombinant monoclonal antibodies and knockout edited cell lines for gold-standard validation. Please check that this product meets your needs before purchasing.</p> <p>If you have any questions, special requirements or concerns, please send us an inquiry and/or contact our Support team ahead of purchase. Recommended alternatives for this product can be found below, along with publications, customer reviews and Q&As</p>

製品の特性

製品の状態	Liquid
保存方法	Shipped at 4°C. Store at -20°C. Stable for 12 months at -20°C.
バッファー	<p>pH: 7.40</p> <p>Preservative: 0.02% Sodium azide</p> <p>Constituents: 50% Glycerol, 0.87% Sodium chloride, PBS</p>
精製度	Without Mg+2 and Ca+2
ポリ/モノ	Immunogen affinity purified
アイソタイプ	ポリクローナル
	IgG

アプリケーション

The Abpromise guarantee

Abpromise保証は、次のテスト済みアプリケーションにおけるab55424の使用に適用されます

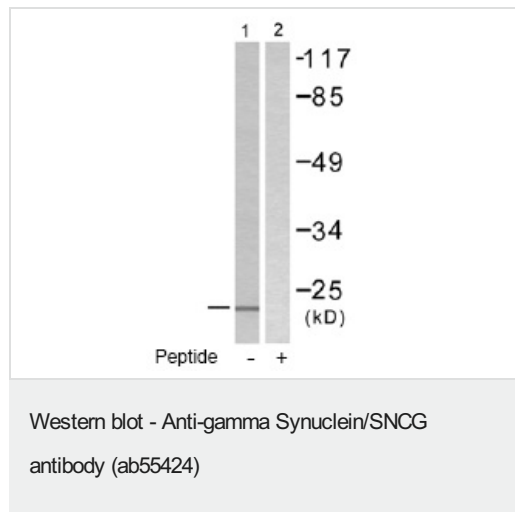
アプリケーションノートには、推奨の開始希釈率がありますが、適切な希釈率につきましてはご確認ください。

アプリケーション	Abreviews	特記事項
ELISA		Use at an assay dependent concentration.
ICC/IF	★★★★★ (1)	Use at an assay dependent concentration.
IHC-Fr	★★★★★ (4)	Use at an assay dependent concentration.
WB	★★★★☆ (3)	1/500 - 1/1000. Detects a band of approximately 13 kDa (predicted molecular weight: 13 kDa).
IHC-P		Use at an assay dependent concentration.

ターゲット情報

機能	Plays a role in neurofilament network integrity. May be involved in modulating axonal architecture during development and in the adult. In vitro, increases the susceptibility of neurofilament-H to calcium-dependent proteases (By similarity). May also function in modulating the keratin network in skin. Activates the MAPK and Elk-1 signal transduction pathway.
組織特異性	Highly expressed in brain, particularly in the substantia nigra. Also expressed in the corpus callosum, heart, skeletal muscle, ovary, testis, colon and spleen. Weak expression in pancreas, kidney and lung.
配列類似性	Belongs to the synuclein family.
翻訳後修飾	Phosphorylated. Phosphorylation by GRK5 appears to occur on residues distinct from the residue phosphorylated by other kinases.
細胞内局在	Cytoplasm > perinuclear region. Cytoplasm > cytoskeleton > centrosome. Cytoplasm > cytoskeleton > spindle. Associated with centrosomes in several interphase cells. In mitotic cells, localized to the poles of the spindle.

画像



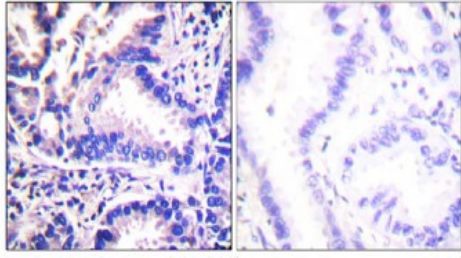
All lanes : Anti-gamma Synuclein/SNCG antibody (ab55424) at 1/500 dilution

Lane 1 : HT29 cell extract, without immunizing peptide

Lane 2 : HT29 cell extract, with immunizing peptide

Predicted band size: 13 kDa

Observed band size: 13 kDa



Peptide - +

Immunohistochemistry (Formalin/PFA-fixed paraffin-embedded sections) - Anti-gamma Synuclein/SNCG antibody (ab55424)

Immunohistochemical analysis of paraffin-embedded human lung carcinoma tissue using ab55424 (1/50 dilution), in the presence or absence of the immunizing peptide.

Please note: All products are "FOR RESEARCH USE ONLY. NOT FOR USE IN DIAGNOSTIC PROCEDURES"

Our Abpromise to you: Quality guaranteed and expert technical support

- Replacement or refund for products not performing as stated on the datasheet
- Valid for 12 months from date of delivery
- Response to your inquiry within 24 hours
- We provide support in Chinese, English, French, German, Japanese and Spanish
- Extensive multi-media technical resources to help you
- We investigate all quality concerns to ensure our products perform to the highest standards

If the product does not perform as described on this datasheet, we will offer a refund or replacement. For full details of the Abpromise, please visit <https://www.abcam.co.jp/abpromise> or contact our technical team.

Terms and conditions

- Guarantee only valid for products bought direct from Abcam or one of our authorized distributors