

Anti-Galectin 8/Gal-8 antibody ab69631

2 References [画像数 2](#)

製品の概要

製品名	Anti-Galectin 8/Gal-8 antibody
製品の詳細	Rabbit polyclonal to Galectin 8/Gal-8
由来種	Rabbit
アプリケーション	適用あり: WB, IHC-P
種交差性	交差種: Mouse, Human
免疫原	Synthetic peptide. This information is proprietary to Abcam and/or its suppliers.
特記事項	<p>The Life Science industry has been in the grips of a reproducibility crisis for a number of years. Abcam is leading the way in addressing this with our range of recombinant monoclonal antibodies and knockout edited cell lines for gold-standard validation. Please check that this product meets your needs before purchasing.</p> <p>If you have any questions, special requirements or concerns, please send us an inquiry and/or contact our Support team ahead of purchase. Recommended alternatives for this product can be found below, along with publications, customer reviews and Q&As</p>

製品の特性

製品の状態	Liquid
保存方法	Shipped at 4°C. Upon delivery aliquot and store at -20°C. Avoid freeze / thaw cycles.
バッファー	<p>pH: 7.40</p> <p>Preservative: 0.02% Sodium azide</p> <p>Constituents: 50% Glycerol (glycerin, glycerine), 0.87% Sodium chloride, PBS</p>
精製度	Without Mg ²⁺ and Ca ²⁺
ポリ/モノ	Immunogen affinity purified
アイソタイプ	ポリクローナル
	IgG

アプリケーション

The Abpromise guarantee

Abpromise保証は、次のテスト済みアプリケーションにおけるab69631の使用に適用されます

アプリケーションノートには、推奨の開始希釈率がありますが、適切な希釈率につきましてはご確認ください。

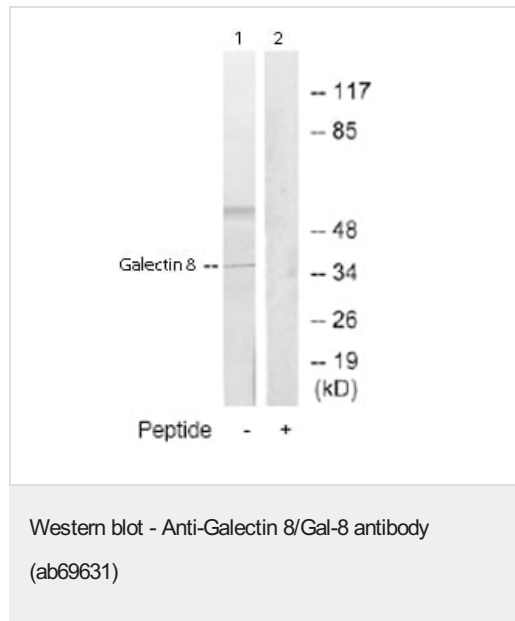
アプリケーション	Abreviews	特記事項
WB		
IHC-P		

追加情報	<p>ELISA: 1/20000.</p> <p>IHC-P: 1/50 - 1/100.</p> <p>WB: 1/500 - 1/1000. Detects bands of approximately 36 and 60 kDa (predicted molecular weight: 36 kDa).</p> <p>Not yet tested in other applications.</p> <p>Optimal dilutions/concentrations should be determined by the end user.</p>
------	---

ターゲット情報

組織特異性	Ubiquitous. Selective expression by prostate carcinomas versus normal prostate and benign prostatic hypertrophy.
配列類似性	Contains 2 galectin domains.
ドメイン	Contains two homologous but distinct carbohydrate-binding domains.
細胞内局在	Cytoplasm.

画像



All lanes : Anti-Galectin 8/Gal-8 antibody (ab69631) at 1/500 dilution

Lane 1 : extracts of 3T3 cells

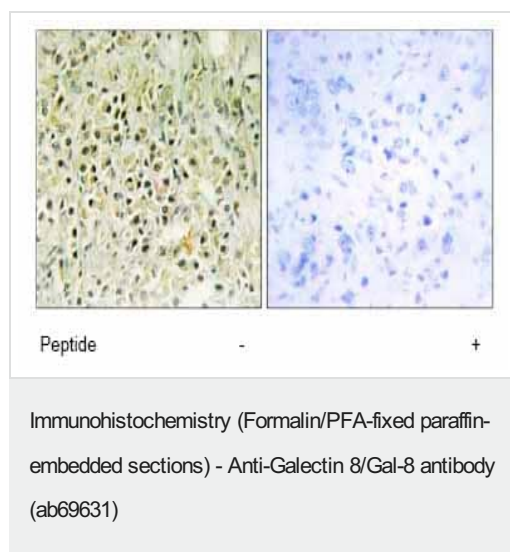
Lane 2 : extracts of 3T3 cells with immunising peptide at 5 µg

Lysates/proteins at 5 µg per lane.

Predicted band size: 36 kDa

Observed band size: 36 kDa

Additional bands at: 60 kDa. We are unsure as to the identity of these extra bands.



Immunohistochemistry analysis of paraffin-embedded human prostate carcinoma tissue using ab69631 at 1:50 dilution. Left image un-treated. Right image treated with immunizing peptide.

Please note: All products are "FOR RESEARCH USE ONLY. NOT FOR USE IN DIAGNOSTIC PROCEDURES"

Our Abpromise to you: Quality guaranteed and expert technical support

- Replacement or refund for products not performing as stated on the datasheet
- Valid for 12 months from date of delivery
- Response to your inquiry within 24 hours
- We provide support in Chinese, English, French, German, Japanese and Spanish
- Extensive multi-media technical resources to help you
- We investigate all quality concerns to ensure our products perform to the highest standards

If the product does not perform as described on this datasheet, we will offer a refund or replacement. For full details of the Abpromise, please visit <https://www.abcam.co.jp/abpromise> or contact our technical team.

Terms and conditions

- Guarantee only valid for products bought direct from Abcam or one of our authorized distributors