

Anti-Galectin 1 antibody [EPR3206(2)] - BSA and Azide free ab240111

KO 評価済 リコンビナント RabMAb

画像数 6

製品の概要

製品名	Anti-Galectin 1 antibody [EPR3206(2)] - BSA and Azide free
製品の詳細	Rabbit monoclonal [EPR3206(2)] to Galectin 1 - BSA and Azide free
由来種	Rabbit
特異性	The mouse and rat recommendation is based on the WB results. We do not guarantee IHC-P for mouse and rat.
アプリケーション	適用あり: Flow Cyt (Intra), IHC-P, ICC/IF, WB
種交差性	交差種: Mouse, Rat, Human
免疫原	Synthetic peptide. This information is proprietary to Abcam and/or its suppliers.
ポジティブ・コントロール	WB: K562 cell lysate, mouse heart and rat heart tissue lysate IHC: human kidney ICC/IF: K-562 (Human chronic myelogenous leukemia lymphoblast)
特記事項	<p>ab240111 is the carrier-free version of ab138513.</p> <p>We are constantly working hard to ensure we provide our customers with best in class antibodies. As a result of this work we are pleased to now offer this antibody in purified format. We are in the process of updating our datasheets. The purified format is designated 'PUR' on our product labels. If you have any questions regarding this update, please contact our Scientific Support team.</p> <p>Our carrier-free antibodies are typically supplied in a PBS-only formulation, purified and free of BSA, sodium azide and glycerol. The carrier-free buffer and high concentration allow for increased conjugation efficiency.</p> <p>This conjugation-ready format is designed for use with fluorochromes, metal isotopes, oligonucleotides, and enzymes, which makes them ideal for antibody labelling, functional and cell-based assays, flow-based assays (e.g. mass cytometry) and Multiplex Imaging applications.</p> <p>Use our conjugation kits for antibody conjugates that are ready-to-use in as little as 20 minutes with <1 minute hands-on-time and 100% antibody recovery: available for fluorescent dyes, HRP, biotin and gold.</p> <p>This product is compatible with the Maxpar[®] Antibody Labeling Kit from Fluidigm, without the need for antibody preparation. Maxpar[®] is a trademark of Fluidigm Canada Inc.</p> <p>This product is a recombinant monoclonal antibody, which offers several advantages including:</p>

- High batch-to-batch consistency and reproducibility
- Improved sensitivity and specificity
- Long-term security of supply
- Animal-free production

For more information [see here](#).

Our RabMAb[®] technology is a patented hybridoma-based technology for making rabbit monoclonal antibodies. For details on our patents, please refer to [RabMAb[®] patents](#).

製品の特性

製品の状態	Liquid
保存方法	Shipped at 4°C. Store at +4°C. Do Not Freeze.
バッファー	pH: 7.2 Constituent: PBS
キャリア・フリー	はい
精製度	Protein A purified
ポリ/モノ	モノクローナル
クローン名	EPR3206(2)
アイソタイプ	IgG

アプリケーション

The Abpromise guarantee **Abpromise保証は、次のテスト済みアプリケーションにおけるab240111の使用に適用されず**
アプリケーションノートには、推奨の開始希釈率がありますが、適切な希釈率につきましてはご検討ください。

アプリケーション	Abreviews	特記事項
Flow Cyt (Intra)		Use at an assay dependent concentration. ab199376 - Rabbit monoclonal IgG, is suitable for use as an isotype control with this antibody.
IHC-P		Use at an assay dependent concentration. Perform heat mediated antigen retrieval with citrate buffer pH 6 before commencing with IHC staining protocol. The mouse and rat recommendation is based on the WB results. We do not guarantee IHC-P for mouse and rat.
ICC/IF		Use at an assay dependent concentration.
WB		Use at an assay dependent concentration. Detects a band of approximately 14 kDa (predicted molecular weight: 15 kDa).

ターゲット情報

機能 May regulate apoptosis, cell proliferation and cell differentiation. Binds beta-galactoside and a wide array of complex carbohydrates. Inhibits CD45 protein phosphatase activity and therefore

the dephosphorylation of Lyn kinase.

組織特異性

Expressed in placenta, maternal decidua and fetal membranes. Within placenta, expressed in trophoblasts, stromal cells, villous endothelium, syncytiotrophoblast apical membrane and villous stroma. Within fetal membranes, expressed in amnion, chorioamniotic mesenchyma and chorion (at protein level). Expressed in cardiac, smooth, and skeletal muscle, neurons, thymus, kidney and hematopoietic cells.

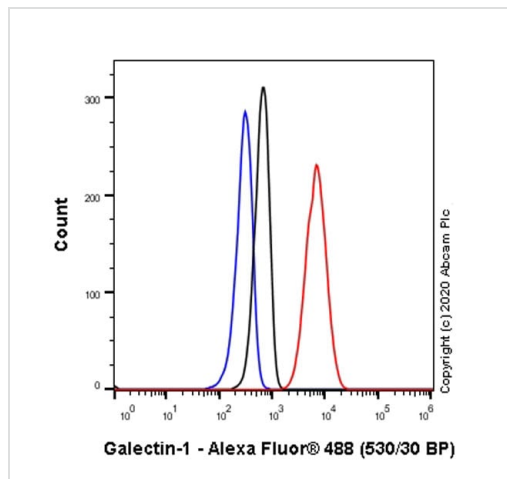
配列類似性

Contains 1 galectin domain.

細胞内局在

Secreted > extracellular space > extracellular matrix.

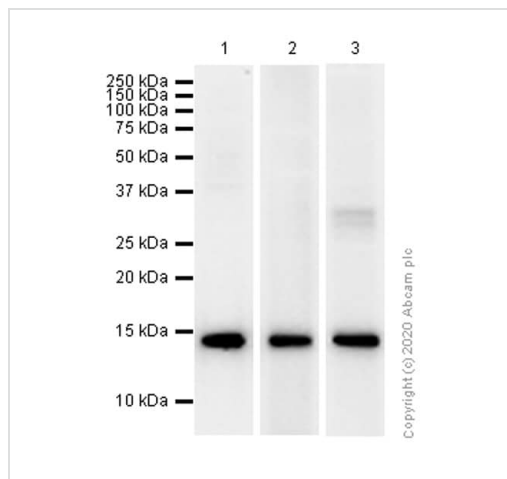
画像



Flow Cytometry (Intracellular) - Anti-Galectin 1 antibody [EPR3206(2)] - BSA and Azide free (ab240111)

This data was developed using ab240111, the same antibody clone in a different buffer formulation.

Flow Cytometry analysis of K-562 (Human chronic myelogenous leukemia lymphoblast) cells labelling Galectin 1 with Purified ab240111 at 1:30 dilution (10 µg/ml) (Red). Cells were fixed with 4% Paraformaldehyde and permeabilised with 90% Methanol. A Goat anti rabbit IgG (Alexa Fluor™ 488, [ab150077](#)) secondary antibody was used at 1:2000. Isotype control - Rabbit monoclonal IgG (Black). Unlabelled control - Cell without incubation with primary antibody and secondary antibody (Blue).



Western blot - Anti-Galectin 1 antibody [EPR3206(2)] - BSA and Azide free (ab240111)

All lanes : Anti-Galectin 1 antibody [EPR3206(2)] ([ab138513](#)) at 1/10000 dilution (Purified)

Lane 1 : K-562 (Human chronic myelogenous leukemia lymphoblast) whole cell lysate

Lane 2 : Mouse heart lysate

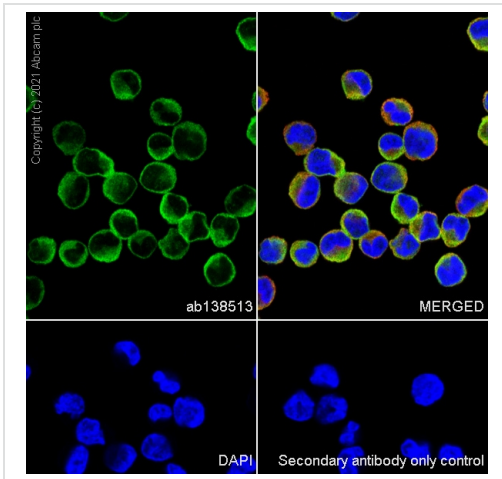
Lane 3 : Rat heart lysate

Secondary

All lanes : Goat Anti-Rabbit IgG H&L (HRP) ([ab97051](#)) at 1/20000 dilution

Predicted band size: 15 kDa

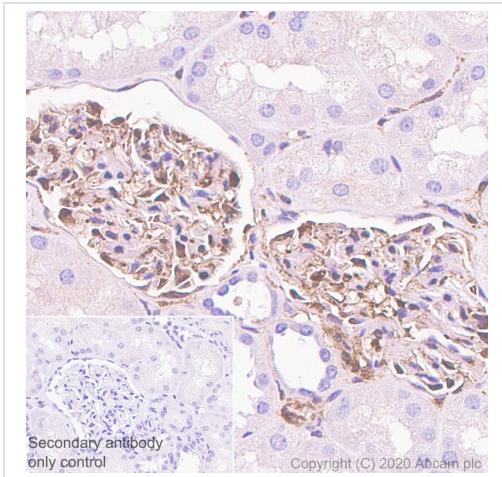
Observed band size: 14 kDa



Immunocytochemistry/ Immunofluorescence - Anti-Galectin 1 antibody [EPR3206(2)] - BSA and Azide free (ab240111)

This data was developed using **ab138513**, the same antibody clone in a different buffer formulation.

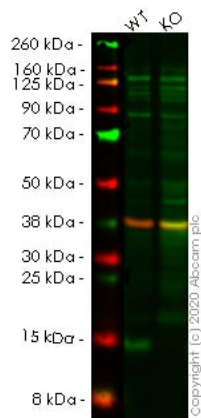
Immunocytochemistry analysis of K-562 (Human chronic myelogenous leukemia lymphoblast) cells labeling Galectin 1 with Purified **ab138513** at 1/50 dilution (5.4 µg/mL). Cells were fixed in 100% Methanol and permeabilized with 0.1% tritonX-100. Cells were counterstained with Ab195889 Anti-alpha Tubulin antibody [DM1A] - Microtubule Marker (Alexa Fluor® 594) 1/200 (2.5 µg/mL). Goat anti rabbit IgG (Alexa Fluor® 488, **ab150077**) was used as the secondary antibody at 1/1000 (2 µg/mL) dilution. DAPI (blue) was used as nuclear counterstain. PBS instead of the primary antibody was used as the secondary antibody only control.



Immunohistochemistry (Formalin/PFA-fixed paraffin-embedded sections) - Anti-Galectin 1 antibody [EPR3206(2)] - BSA and Azide free (ab240111)

This data was developed using ab240111, the same antibody clone in a different buffer formulation.

Immunohistochemistry (Formalin/PFA-fixed paraffin-embedded sections) analysis of human kidney tissue sections labeling Galectin 1 with Purified ab240111 at 1/16000 dilution (0.02 µg/mL). Heat mediated antigen retrieval was performed using Heat mediated antigen retrieval using Bond™ Epitope Retrieval Solution 1 (pH 6.0) . Tissue was counterstained with Hematoxylin. Rabbit specific IHC polymer detection kit HRP/DAB (**ab209101**) secondary antibody was used at 1/0 dilution. PBS instead of the primary antibody was used as the negative control. M3



Western blot - Anti-Galectin 1 antibody
[EPR3206(2)] - BSA and Azide free (ab240111)

All lanes : Anti-Galectin 1 antibody [EPR3206(2)] (**ab138513**) at 1/1000 dilution (Unpurified)

Lane 1 : Wild-type HEK-293T cell lysate

Lane 2 : LGALS1 knockout HEK-293T cell lysate

Lysates/proteins at 20 µg per lane.

Performed under reducing conditions.

Predicted band size: 15 kDa

Observed band size: 15 kDa

This data was developed using the same antibody clone in a different buffer formation (**ab138513**).

Lanes 1-2: Merged signal (red and green). Green - **ab138513** observed at 15 kDa. Red - Anti-GAPDH antibody [6C5] - Loading Control (**ab8245**) observed at 37 kDa.

ab138513 was shown to react with Galectin 1 in wild-type HEK-293T cells in western blot. Loss of signal was observed when knockout cell line **ab266850** (knockout cell lysate **ab256974**) was used. Wild-type HEK-293T and LGALS1 knockout HEK-293T cell lysates were subjected to SDS-PAGE. **ab138513** and Anti-GAPDH antibody [6C5] - Loading Control (**ab8245**) overnight at 4°C at a 1 in 1000 Dilution and a 1 in 20000 dilution respectively. Blots were developed with Goat anti-Rabbit IgG H&L (IRDye®800CW) preadsorbed (**ab216773**) and Goat anti-Mouse IgG H&L (IRDye®680RD) preadsorbed (**ab216776**) secondary antibodies at 1 in 20000 dilution for 1 hour at room temperature before imaging.

Why choose a recombinant antibody?



Research with confidence
Consistent and reproducible results



Long-term and scalable supply
Recombinant technology



Success from the first experiment
Confirmed specificity



Ethical standards compliant
Animal-free production

Anti-Galectin 1 antibody [EPR3206(2)] - BSA and Azide free (ab240111)

Please note: All products are "FOR RESEARCH USE ONLY. NOT FOR USE IN DIAGNOSTIC PROCEDURES"

Our Abpromise to you: Quality guaranteed and expert technical support

- Replacement or refund for products not performing as stated on the datasheet
- Valid for 12 months from date of delivery
- Response to your inquiry within 24 hours
- We provide support in Chinese, English, French, German, Japanese and Spanish
- Extensive multi-media technical resources to help you
- We investigate all quality concerns to ensure our products perform to the highest standards

If the product does not perform as described on this datasheet, we will offer a refund or replacement. For full details of the Abpromise, please visit <https://www.abcam.co.jp/abpromise> or contact our technical team.

Terms and conditions

- Guarantee only valid for products bought direct from Abcam or one of our authorized distributors