

Anti-Galectin 1 antibody ab25138

★★★★★ [4 Abreviews](#) [32 References](#) [画像数 5](#)

製品の概要

製品名	Anti-Galectin 1 antibody
製品の詳細	Rabbit polyclonal to Galectin 1
由来種	Rabbit
アプリケーション	適用あり: IHC-P, ICC/IF, WB
種交差性	交差種: Human
免疫原	Recombinant full length protein (Human).
特記事項	<p>The Life Science industry has been in the grips of a reproducibility crisis for a number of years. Abcam is leading the way in addressing this with our range of recombinant monoclonal antibodies and knockout edited cell lines for gold-standard validation. Please check that this product meets your needs before purchasing.</p> <p>If you have any questions, special requirements or concerns, please send us an inquiry and/or contact our Support team ahead of purchase. Recommended alternatives for this product can be found below, along with publications, customer reviews and Q&As</p>

製品の特性

製品の状態	Liquid
保存方法	Shipped at 4°C. Store at +4°C short term (1-2 weeks). Upon delivery aliquot. Store at -20°C or -80°C. Avoid freeze / thaw cycle.
バッファー	Constituent: 1.34% PBS
精製度	Immunogen affinity purified
ポリ/モノ	ポリクローナル
アイソタイプ	IgG

アプリケーション

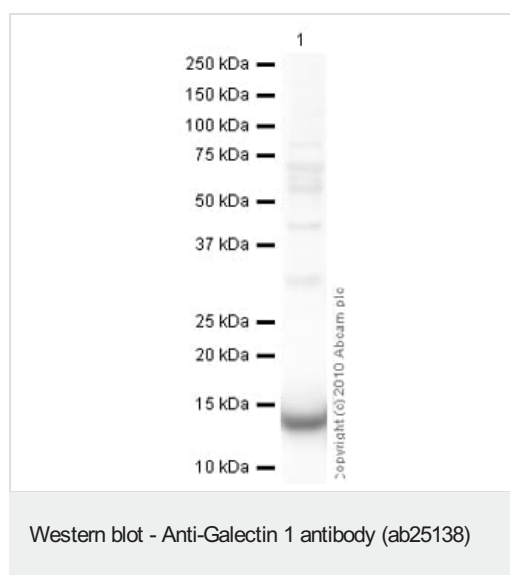
The Abpromise guarantee **Abpromise保証は、次のテスト済みアプリケーションにおけるab25138の使用に適用されます**
アプリケーションノートには、推奨の開始希釈率がありますが、適切な希釈率につきましてはご検討ください。

アプリケーション	Abreviews	特記事項
IHC-P		Use a concentration of 1 µg/ml. Perform heat mediated antigen retrieval with citrate buffer pH 6 before commencing with IHC staining protocol.
ICC/IF		Use a concentration of 1 µg/ml.
WB	★★★★★ (3)	Use a concentration of 0.1 - 0.2 µg/ml. Detects a band of approximately 14 kDa (predicted molecular weight: 14 kDa). The detection limit for recombinant human Galectin 1 is 1.5 - 3.0 ng/lane, under either reducing or non-reducing conditions.

ターゲット情報

機能	May regulate apoptosis, cell proliferation and cell differentiation. Binds beta-galactoside and a wide array of complex carbohydrates. Inhibits CD45 protein phosphatase activity and therefore the dephosphorylation of Lyn kinase.
組織特異性	Expressed in placenta, maternal decidua and fetal membranes. Within placenta, expressed in trophoblasts, stromal cells, villous endothelium, syncytiotrophoblast apical membrane and villous stroma. Within fetal membranes, expressed in amnion, chorioamniotic mesenchyma and chorion (at protein level). Expressed in cardiac, smooth, and skeletal muscle, neurons, thymus, kidney and hematopoietic cells.
配列類似性	Contains 1 galectin domain.
細胞内局在	Secreted > extracellular space > extracellular matrix.

画像



Anti-Galectin 1 antibody (ab25138) at 1 µg/ml + Human placenta tissue lysate - total protein ([ab29745](#)) at 10 µg

Secondary

Goat Anti-Rabbit IgG H&L (HRP) preadsorbed ([ab97080](#)) at 1/5000 dilution

Developed using the ECL technique.

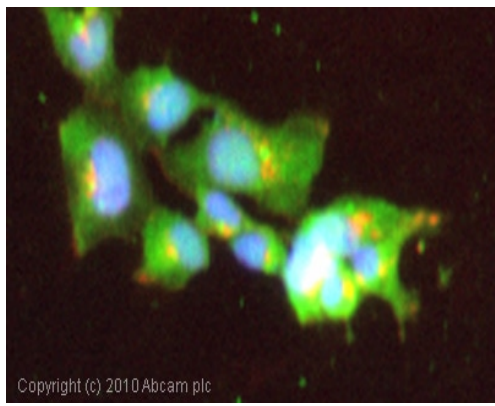
Performed under reducing conditions.

Predicted band size: 14 kDa

Observed band size: 14 kDa

Additional bands at: 32 kDa, 45 kDa, 73 kDa. We are unsure as to the identity of these extra bands.

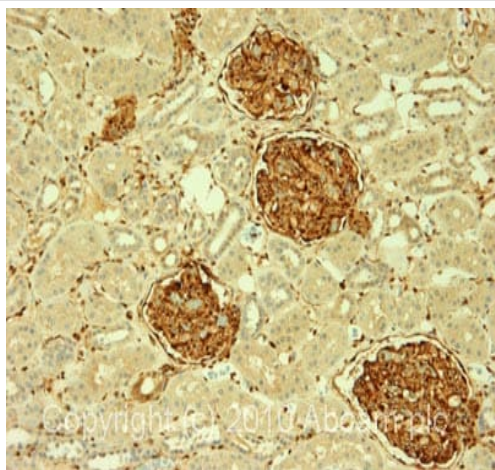
Exposure time: 30 seconds



Copyright (c) 2010 Abcam plc

Immunocytochemistry/ Immunofluorescence - Anti-Galectin 1 antibody (ab25138)

ICC/IF image of ab25138 stained Hek293 cells. The cells were 4% PFA fixed (10 min) and then incubated in 1%BSA / 10% normal goat serum / 0.3M glycine in 0.1% PBS-Tween for 1h to permeabilise the cells and block non-specific protein-protein interactions. The cells were then incubated with the antibody (ab25138, 1µg/ml) overnight at +4°C. The secondary antibody (green) was Alexa Fluor® 488 goat anti-rabbit IgG (H+L) used at a 1/1000 dilution for 1h. Alexa Fluor® 594 WGA was used to label plasma membranes (red) at a 1/200 dilution for 1h. DAPI was used to stain the cell nuclei (blue) at a concentration of 1.43µM.

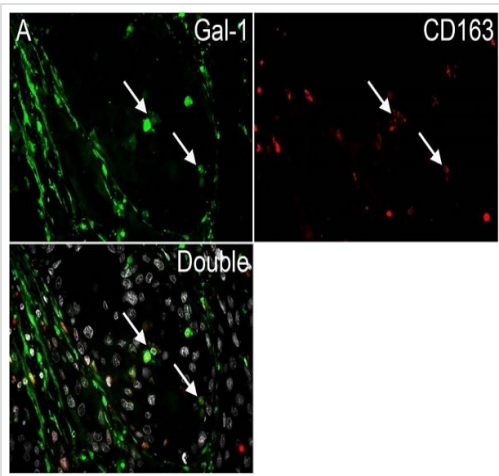


Copyright (c) 2010 Abcam plc

Immunohistochemistry (Formalin/PFA-fixed paraffin-embedded sections) - Anti-Galectin 1 antibody (ab25138)

IHC image of ab25138 staining in human normal kidney formalin fixed paraffin embedded tissue section, performed on a Leica Bond™ system using the standard protocol F. The section was pre-treated using heat mediated antigen retrieval with sodium citrate buffer (pH6, epitope retrieval solution 1) for 20 mins. The section was then incubated with ab25138, 1µg/ml, for 15 mins at room temperature and detected using an HRP conjugated compact polymer system. DAB was used as the chromogen. The section was then counterstained with haematoxylin and mounted with DPX.

For other IHC staining systems (automated and non-automated) customers should optimize variable parameters such as antigen retrieval conditions, primary antibody concentration and antibody incubation times.



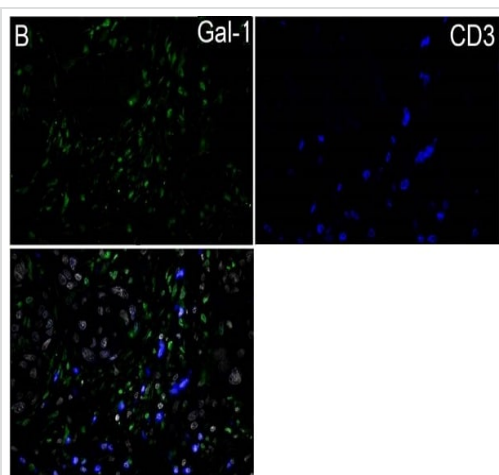
Immunohistochemistry (Formalin/PFA-fixed paraffin-embedded sections) - Anti-Galectin 1 antibody

(ab25138)

Punt S et al.; PLoS One. 2015; 10(6): e0129119., Fig 3, doi: 10.1371/journal.pone.0129119 Reproduced under the Creative Commons license <http://creativecommons.org/licenses/by/4.0/>

ab25138 staining Galectin-1 in Human cervical cancer tissue sections by Immunohistochemistry (IHC-P - paraformaldehyde-fixed, paraffin-embedded sections). Samples were incubated with primary antibody (1/1000 in 1% BSA in PBS) overnight at room temperature. An Alexa Fluor A647-conjugated Donkey anti-rabbit polyclonal (1/200) was used as the secondary antibody.

Representative images from double stainings of Galectin-1 and CD163. Arrows indicate examples of double positive cells.



Immunohistochemistry (Formalin/PFA-fixed paraffin-embedded sections) - Anti-Galectin 1 antibody

(ab25138)

Punt S et al.; PLoS One. 2015; 10(6): e0129119., Fig 3, doi: 10.1371/journal.pone.0129119

ab25138 staining Galectin-1 in Human cervical cancer tissue sections by Immunohistochemistry (IHC-P - paraformaldehyde-fixed, paraffin-embedded sections). Samples were incubated with primary antibody (1/1000 in 1% BSA in PBS) overnight at room temperature. An Alexa Fluor A647-conjugated Donkey anti-rabbit polyclonal (1/200) was used as the secondary antibody.

Representative images from double stainings of Galectin-1 and CD3.

Please note: All products are "FOR RESEARCH USE ONLY. NOT FOR USE IN DIAGNOSTIC PROCEDURES"

Our Abpromise to you: Quality guaranteed and expert technical support

- Replacement or refund for products not performing as stated on the datasheet
- Valid for 12 months from date of delivery
- Response to your inquiry within 24 hours
- We provide support in Chinese, English, French, German, Japanese and Spanish
- Extensive multi-media technical resources to help you

- We investigate all quality concerns to ensure our products perform to the highest standards

If the product does not perform as described on this datasheet, we will offer a refund or replacement. For full details of the Abpromise, please visit <https://www.abcam.co.jp/abpromise> or contact our technical team.

Terms and conditions

- Guarantee only valid for products bought direct from Abcam or one of our authorized distributors