

Anti-GAG antibody ab100970

6 References [画像数 1](#)

製品の概要

製品名	Anti-GAG antibody
製品の詳細	Rabbit polyclonal to GAG
由来種	Rabbit
アプリケーション	適用あり: WB, ELISA
種交差性	交差種: Murine leukemia virus
免疫原	Recombinant Murine Leukemia Virus GAG p30 capsid protein.
特記事項	<p>The Life Science industry has been in the grips of a reproducibility crisis for a number of years. Abcam is leading the way in addressing this with our range of recombinant monoclonal antibodies and knockout edited cell lines for gold-standard validation. Please check that this product meets your needs before purchasing.</p> <p>If you have any questions, special requirements or concerns, please send us an inquiry and/or contact our Support team ahead of purchase. Recommended alternatives for this product can be found below, along with publications, customer reviews and Q&As</p>

製品の特性

製品の状態	Liquid
保存方法	Shipped at 4°C. Store at +4°C short term (1-2 weeks). Store at -20°C or -80°C. Avoid freeze / thaw cycle.
バッファー	pH: 7.4 Constituent: PBS
精製度	Protein G purified
ポリ/モノ	ポリクローナル
アイソタイプ	IgG

アプリケーション

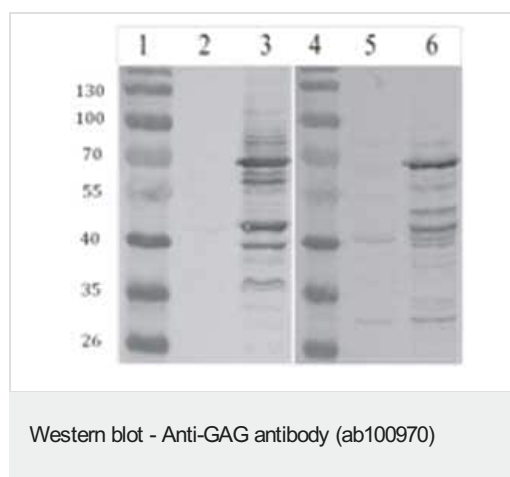
The Abpromise guarantee **Abpromise保証は、次のテスト済みアプリケーションにおけるab100970の使用に適用されます**
アプリケーションノートには、推奨の開始希釈率がありますが、適切な希釈率につきましてはご検討ください。

アプリケーション	Abreviews	特記事項
WB		1/1500 - 1/2000. Predicted molecular weight: 30 kDa.
ELISA		Use at an assay dependent concentration.

ターゲット情報

関連性 Murine leukemia viruses belong to family of Retroviruses group and are named for their ability to cause cancer in mice. Some form of MLV's are used in cancer research. The retroviral Gag protein plays important roles at several stages in the viral life cycle. Late in infection, the Gag precursor protein acts to mediate the assembly and release of virion particles. After budding, the core matures by cleavage of Gag precursor protein into the mature core proteins, the matrix (MA), capsid (CA) and nucleocapsid proteins. These separated Gag proteins then play roles in the early stages of infection.

画像



All lanes : Anti-GAG antibody (ab100970) at 1/1500 dilution

Lane 1 : PageRuler Prestained Protein Ladder (#SM0671, lot: 00052778, Fermentas);

Lane 2 : HEK293 cells

Lane 3 : GAG protein expressed in HEK293 cells

Lane 4 : PageRuler Prestained Protein Ladder (#SM0671, lot: 00052778, Fermentas);

Lane 5 : CHO cells

Lane 6 : Gag protein expressed in CHO cells

Secondary

All lanes : Alkaline phosphatase conjugated anti rabbit IgG at 1/5000 dilution

Predicted band size: 30 kDa

Please note: All products are "FOR RESEARCH USE ONLY. NOT FOR USE IN DIAGNOSTIC PROCEDURES"

Our Abpromise to you: Quality guaranteed and expert technical support

- Replacement or refund for products not performing as stated on the datasheet
- Valid for 12 months from date of delivery
- Response to your inquiry within 24 hours

- We provide support in Chinese, English, French, German, Japanese and Spanish
- Extensive multi-media technical resources to help you
- We investigate all quality concerns to ensure our products perform to the highest standards

If the product does not perform as described on this datasheet, we will offer a refund or replacement. For full details of the Abpromise, please visit <https://www.abcam.co.jp/abpromise> or contact our technical team.

Terms and conditions

- Guarantee only valid for products bought direct from Abcam or one of our authorized distributors