

### Anti-GABA B Receptor 2/GABBR2 antibody [EP2411Y] ab75838

リコンビナント **RabMAb**

★★★★★ **4 Abreviews** **17 References** 画像数 6

#### 製品の概要

製品名	Anti-GABA B Receptor 2/GABBR2 antibody [EP2411Y]
製品の詳細	Rabbit monoclonal [EP2411Y] to GABA B Receptor 2/GABBR2
由来種	Rabbit
アプリケーション	<b>適用あり:</b> IHC-P, WB, Flow Cyt (Intra) <b>適用なし:</b> ICC/IF or IP
種交差性	<b>交差種:</b> Mouse, Rat, Human
免疫原	Synthetic peptide. This information is proprietary to Abcam and/or its suppliers.
ポジティブ・コントロール	WB: Unboiled human hippocampus, rat brain, and mouse brain tissue lysates. Human cerebellum lysate; IHC-P: Human brain tissue, Rat Postnatal (P15) Cerebellum; Flow Cyt (intra): SH-SY5Y (human neuroblastoma cell line from bone marrow).
特記事項	This product is a recombinant monoclonal antibody, which offers several advantages including: <ul style="list-style-type: none"> <li>- High batch-to-batch consistency and reproducibility</li> <li>- Improved sensitivity and specificity</li> <li>- Long-term security of supply</li> <li>- Animal-free production</li> </ul> For more information <a href="#">see here</a> . Our RabMAb <sup>®</sup> technology is a patented hybridoma-based technology for making rabbit monoclonal antibodies. For details on our patents, please refer to <a href="#">RabMAb<sup>®</sup> patents</a> .

#### 製品の特性

製品の状態	Liquid
保存方法	Shipped at 4°C. Upon delivery aliquot and store at -20°C. Avoid freeze / thaw cycles.
バッファー	pH: 7.20 Preservative: 0.01% Sodium azide Constituents: 59% PBS, 40% Glycerol (glycerin, glycerine), 0.5% BSA
精製度	Protein A purified
ポリ/モノ	モノクローナル
クローン名	EP2411Y

アイソタイプIgG

アプリケーション

The Abpromise guarantee      **Abpromise保証は、次のテスト済みアプリケーションにおけるab75838の使用に適用されます**  
アプリケーションノートには、推奨の開始希釈率がありますが、適切な希釈率につきましてはご検討ください。

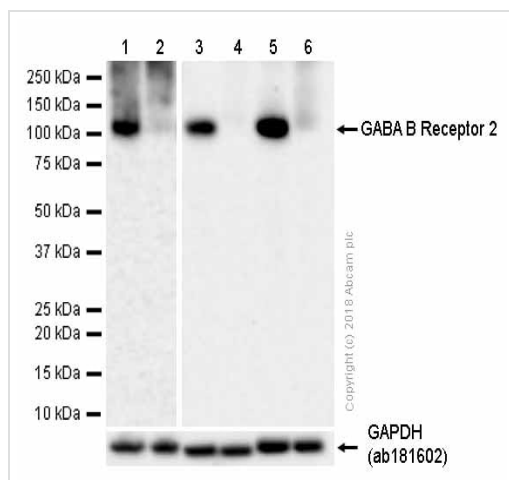
アプリケーション	Abreviews	特記事項
IHC-P	★★★★★ (2)	1/100 - 1/250. Perform heat mediated antigen retrieval before commencing with IHC staining protocol.
WB	★★★★★ (1)	1/500 - 1/1000. Predicted molecular weight: 106 kDa. We recommend not to boil the samples after lysis to get desired WB results.
Flow Cyt (Intra)		1/40. <b>ab172730</b> - Rabbit monoclonal IgG, is suitable for use as an isotype control with this antibody.

追加情報      Is unsuitable for ICC/IF or IP.

ターゲット情報

機能	Receptor for GABA. The activity of this receptor is mediated by G-proteins that inhibit adenylyl cyclase activity, stimulates phospholipase A2, activates potassium channels, inactivates voltage-dependent calcium-channels and modulates inositol phospholipids hydrolysis. Plays a critical role in the fine-tuning of inhibitory synaptic transmission. Pre-synaptic GABA-B-R inhibit neurotransmitter release by down-regulating high-voltage activated calcium channels, whereas postsynaptic GABA-B-R decrease neuronal excitability by activating a prominent inwardly rectifying potassium (Kir) conductance that underlies the late inhibitory postsynaptic potentials. Not only implicated in synaptic inhibition but also in hippocampal long-term potentiation, slow wave sleep, muscle relaxation and antinociception.
組織特異性	Highly expressed in brain, especially in cerebral cortex, thalamus, hippocampus, frontal, occipital and temporal lobe, occipital pole and cerebellum, followed by corpus callosum, caudate nucleus, spinal cord, amygdala and medulla. Weakly expressed in heart, testis and skeletal muscle.
配列類似性	Belongs to the G-protein coupled receptor 3 family. GABA-B receptor subfamily.
ドメイン	Alpha-helical parts of the C-terminal intracellular region mediate heterodimeric interaction with GABA-B receptor 1.
細胞内局在	Cell membrane. Cell junction > synapse > postsynaptic cell membrane. Moreover coexpression of GABA-B-R1 and GABA-B-R2 appears to be a prerequisite for maturation and transport of GABA-B-R1 to the plasma membrane.

画像



Western blot - Anti-GABA B Receptor 2/GABBR2 antibody [EP2411Y] (ab75838)

**All lanes :** Anti-GABA B Receptor 2/GABBR2 antibody [EP2411Y] (ab75838) at 1/1000 dilution

**Lane 1 :** Human hippocampus lysates unboiled

**Lane 2 :** Human hippocampus lysates boiled

**Lane 3 :** Mouse brain lysates unboiled

**Lane 4 :** Mouse brain lysates boiled

**Lane 5 :** Rat brain lysates unboiled

**Lane 6 :** Rat brain lysates boiled

Lysates/proteins at 20 µg per lane.

### Secondary

**All lanes :** Goat Anti-Rabbit IgG H&L (HRP) ([ab97051](#)) at 1/20000 dilution

**Predicted band size:** 106 kDa

**Observed band size:** 106 kDa

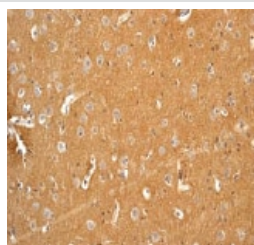
**Blocking/Diluting buffer and concentration:** 5% NFDM/TBST.

**Exposure time:**

**Lane 1 and 2:** 140 seconds

**Lane 3 to 6:** 180 seconds

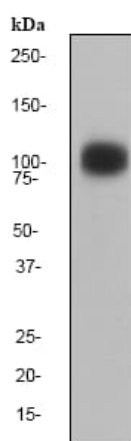
We recommend not to boil the samples after lysis to get desired WB results.



Immunohistochemistry (Formalin/PFA-fixed paraffin-embedded sections) - Anti-GABA B Receptor 2/GABBR2 antibody [EP2411Y] (ab75838)

ab75838, at a 1/100 dilution, staining GABA B Receptor 2/GABBR2 in paraffin embedded human brain tissue by Immunohistochemistry.

Perform heat mediated antigen retrieval before commencing with IHC staining protocol.



Western blot - Anti-GABA B Receptor 2/GABBR2 antibody [EP2411Y] (ab75838)

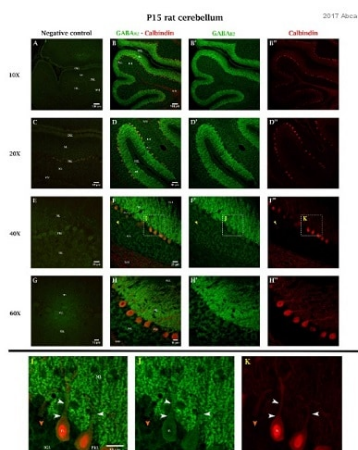
Anti-GABA B Receptor 2/GABBR2 antibody [EP2411Y] (ab75838)  
at 1/500 dilution + human cerebellum lysate at 10 µg

### Secondary

goat anti-rabbit HRP at 1/2000 dilution

**Predicted band size:** 106 kDa

**Observed band size:** 106 kDa



Immunohistochemistry (Formalin/PFA-fixed paraffin-embedded sections) - Anti-GABA B Receptor 2/GABBR2 antibody [EP2411Y] (ab75838)

This image is courtesy of an Abreview submitted by Estella Munoz

Ab75838 staining GABA B Receptor 2/GABBR2 in Rat Postnatal (P15) Cerebellum by Immunohistochemistry (IHC-P - paraformaldehyde-fixed, paraffin-embedded sections). Tissue was fixed with paraformaldehyde and blocked with 10% serum for 1 hour at 25°C; antigen retrieval was by heat mediation in a 10mM citrate buffer, pH6. Samples were incubated with primary antibody (1/400 in PBS with 2% donkey serum) for 16 hours at 25°C. An Alexa Fluor® 488 conjugated Donkey anti-rabbit, polyclonal was used as the secondary antibody.

IHC and confocal microscopy for GABA B Receptor 2/GABBR2 (GABAB2) in the postnatal rat cerebellum. (A, C, E, G) Negative control by omission of the primary antibody at 10, 20, 40 and 60X. (B-B'', D-D'', F-F'', H-H'') Immunolabeling for GABAB2 (green) and/or the calcium-binding protein calbindin (red) at 10, 20, 40 and 60X. (I-K) Zooms of the insets shown in F-F''. Specific signal for GABAB2 is mainly observed in the molecular layer (ML) and internal granular layer (IGL) of the cerebellar grey matter. Purkinje cells (PKL) are enriched in GABAB2 especially at the surface of the dendritic trees (white arrowheads) oriented towards the ML. Golgi II cells (yellow arrowhead) located in the IGL are also positive for GABAB2. EGL: external granular layer. n: calbindin-positive nucleus of a Purkinje cell. Orange arrowhead: GABAB2-immunoreactive granular cell in the IGL. WM: white matter. An Olympus FV 1000 confocal microscope was used and images were processed with Adobe Photoshop CS4. Figure generated by Juan Vilchez Aruani and Estela Muñoz, IHEM, UNCuyo, CONICET, Mendoza, Argentina.

Flow Cytometry (Intracellular) - Anti-GABA B  
Receptor 2/GABBR2 antibody [EP2411Y] (ab75838)

Overlay histogram showing SH-SY5Y cells stained with ab75838 (red line). The cells were fixed with 4% paraformaldehyde (10 min) and then permeabilized with 0.1% PBS-Tween for 20 min. The cells were then incubated in 1x PBS / 10% normal goat serum / 0.3M glycine to block non-specific protein-protein interactions followed by the antibody (ab75838, 1/50 dilution) for 30 min at 22°C. The secondary antibody used was DyLight® 488 goat anti-rabbit IgG (H+L) (**ab96899**) at 1/500 dilution for 30 min at 22°C. Isotype control antibody (black line) was rabbit IgG (monoclonal) (1µg/1x10<sup>6</sup> cells) used under the same conditions. Acquisition of >5,000 events was performed. This antibody gave a positive signal in SH-SY5Y cells fixed with 80% methanol (5 min)/permeabilized with 0.1% PBS-Tween for 20 min used under the same conditions.

Why choose a  
recombinant antibody?



Research with  
confidence  
Consistent and  
reproducible results



Long-term and  
scalable supply  
Recombinant  
technology



Success from the  
first experiment  
Confirmed  
specificity



Ethical standards  
compliant  
Animal-free  
production

Anti-GABA B Receptor 2/GABBR2 antibody  
[EP2411Y] (ab75838)

**Please note:** All products are "FOR RESEARCH USE ONLY. NOT FOR USE IN DIAGNOSTIC PROCEDURES"

### Our Abpromise to you: Quality guaranteed and expert technical support

- Replacement or refund for products not performing as stated on the datasheet
- Valid for 12 months from date of delivery
- Response to your inquiry within 24 hours
- We provide support in Chinese, English, French, German, Japanese and Spanish
- Extensive multi-media technical resources to help you
- We investigate all quality concerns to ensure our products perform to the highest standards

If the product does not perform as described on this datasheet, we will offer a refund or replacement. For full details of the Abpromise, please visit <https://www.abcam.co.jp/abpromise> or contact our technical team.

## Terms and conditions

---

- Guarantee only valid for products bought direct from Abcam or one of our authorized distributors