


Anti-GABA A Receptor beta 2/GABRB2 antibody [EPR10517] ab156000

リコンビナント **RabMAb**

10 References 画像数 2

製品の概要

製品名	Anti-GABA A Receptor beta 2/GABRB2 antibody [EPR10517]
製品の詳細	Rabbit monoclonal [EPR10517] to GABA A Receptor beta 2/GABRB2
由来種	Rabbit
アプリケーション	適用あり: WB 適用なし: Flow Cyt, ICC/IF, IHC-P or IP
種交差性	交差種: Human 交差が予測される動物種: Mouse, Rat 
免疫原	Synthetic peptide. This information is proprietary to Abcam and/or its suppliers.
ポジティブ・コントロール	HepG2, A549, fetal brain and Human cerebellum lysates.
特記事項	This product is a recombinant monoclonal antibody, which offers several advantages including: <ul style="list-style-type: none"> - High batch-to-batch consistency and reproducibility - Improved sensitivity and specificity - Long-term security of supply - Animal-free production For more information see here . Our RabMAb [®] technology is a patented hybridoma-based technology for making rabbit monoclonal antibodies. For details on our patents, please refer to RabMAb[®] patents .

製品の特性

製品の状態	Liquid
保存方法	Shipped at 4°C. Store at -20°C.
バッファー	pH: 7.2 Preservative: 0.01% Sodium azide Constituents: 59% PBS, 40% Glycerol (glycerin, glycerine), 0.5% BSA
精製度	Protein A purified
ポリモノ	モノクローナル
クローン名	EPR10517

アイソタイプIgG

アプリケーション

The Abpromise guarantee Abpromise保証は、次のテスト済みアプリケーションにおけるab156000の使用に適用されます
アプリケーションノートには、推奨の開始希釈率がありますが、適切な希釈率につきましてはご検討ください。

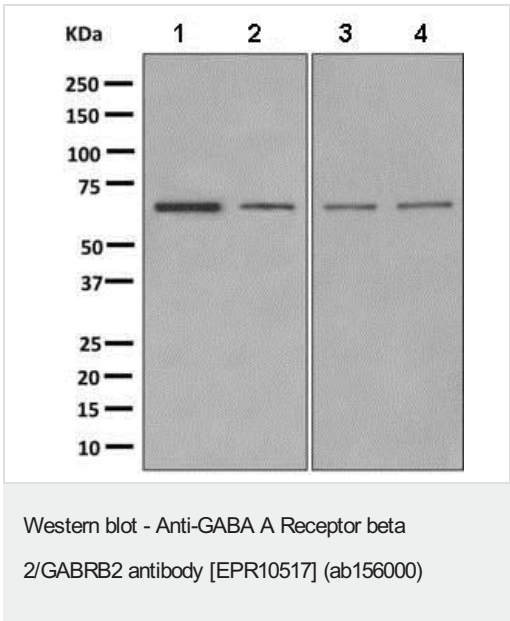
アプリケーション	Abreviews	特記事項
WB		1/10000 - 1/50000. Predicted molecular weight: 59 kDa.

追加情報 Is unsuitable for Flow Cyt, ICC/IF, IHC-P or IP.

ターゲット情報

機能	GABA, the major inhibitory neurotransmitter in the vertebrate brain, mediates neuronal inhibition by binding to the GABA/benzodiazepine receptor and opening an integral chloride channel.
組織特異性	Isoform 1 and isoform 2 show reduced expression in schizophrenic brain. Isoform 3 shows increased expression in schizophrenic and bipolar disorder brains while isoform 4 shows reduced expression.
配列類似性	Belongs to the ligand-gated ion channel (TC 1.A.9) family. Gamma-aminobutyric acid receptor (TC 1.A.9.5) subfamily. GABRB2 sub-subfamily.
細胞内局在	Cell junction > synapse > postsynaptic cell membrane. Cell membrane.

画像



All lanes : Anti-GABA A Receptor beta 2/GABRB2 antibody [EPR10517] (ab156000) at 1/10000 dilution

- Lane 1 :** HepG2 cell lysate
- Lane 2 :** A549 cell lysate
- Lane 3 :** Fetal brain lysate
- Lane 4 :** Human cerebellum lysate

Lysates/proteins at 10 µg per lane.

Secondary
All lanes : HRP labelled goat anti-rabbit at 1/2000 dilution

Predicted band size: 59 kDa

Why choose a recombinant antibody?



Research with confidence
Consistent and reproducible results



Long-term and scalable supply
Recombinant technology



Success from the first experiment
Confirmed specificity



Ethical standards compliant
Animal-free production

Anti-GABA A Receptor beta 2/GABRB2 antibody
[EPR10517] (ab156000)

Please note: All products are "FOR RESEARCH USE ONLY. NOT FOR USE IN DIAGNOSTIC PROCEDURES"

Our Abpromise to you: Quality guaranteed and expert technical support

- Replacement or refund for products not performing as stated on the datasheet
- Valid for 12 months from date of delivery
- Response to your inquiry within 24 hours
- We provide support in Chinese, English, French, German, Japanese and Spanish
- Extensive multi-media technical resources to help you
- We investigate all quality concerns to ensure our products perform to the highest standards

If the product does not perform as described on this datasheet, we will offer a refund or replacement. For full details of the Abpromise, please visit <https://www.abcam.co.jp/abpromise> or contact our technical team.

Terms and conditions

- Guarantee only valid for products bought direct from Abcam or one of our authorized distributors