


# Anti-GABA A Receptor alpha 2/GABRA2 antibody ab72445

★★★★★ [1 Abreviews](#) [18 References](#) [画像数 1](#)

### 製品の概要

製品名	Anti-GABA A Receptor alpha 2/GABRA2 antibody
製品の詳細	Rabbit polyclonal to GABA A Receptor alpha 2/GABRA2
由来種	Rabbit
特異性	ab72445 is specific for GABA A Receptor alpha 2/GABRA2
アプリケーション	<b>適用あり:</b> WB
種交差性	<b>交差種:</b> Mouse <b>交差が予測される動物種:</b> Cow, Dog, Human, Non human primates, Zebrafish 
免疫原	Fusion protein. This information is proprietary to Abcam and/or its suppliers.
ポジティブ・コントロール	rat brain lysates
特記事項	<p>The Life Science industry has been in the grips of a reproducibility crisis for a number of years. Abcam is leading the way in addressing this with our range of recombinant monoclonal antibodies and knockout edited cell lines for gold-standard validation. Please check that this product meets your needs before purchasing.</p> <p>If you have any questions, special requirements or concerns, please send us an inquiry and/or contact our Support team ahead of purchase. Recommended alternatives for this product can be found below, along with publications, customer reviews and Q&amp;As</p>

### 製品の特性

製品の状態	Liquid
保存方法	Shipped at 4°C. Upon delivery aliquot and store at -20°C. Avoid freeze / thaw cycles.
バッファー	pH: 7.50 Constituents: 0.01% BSA, 50% Glycerol, 0.87% Sodium chloride, 0.238% HEPES
精製度	Immunogen affinity purified
ポリ/モノ	ポリクローナル
アイソタイプ	IgG

### アプリケーション

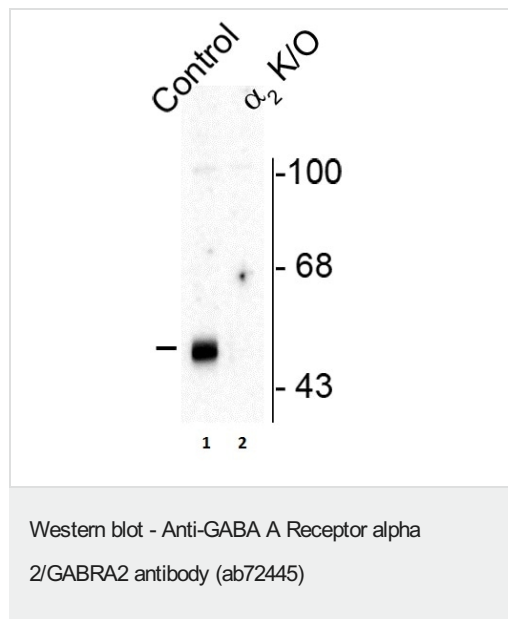
**The Abpromise guarantee**      **Abpromise保証は、**次のテスト済みアプリケーションにおけるab72445の使用に適用されます  
アプリケーションノートには、推奨の開始希釈率がありますが、適切な希釈率につきましてはご検討ください。

アプリケーション	Abreviews	特記事項
WB		1/1000. Detects a band of approximately 51 kDa (predicted molecular weight: 51 kDa).

## ターゲット情報

機能	GABA, the major inhibitory neurotransmitter in the vertebrate brain, mediates neuronal inhibition by binding to the GABA/benzodiazepine receptor and opening an integral chloride channel.
配列類似性	Belongs to the ligand-gated ion channel (TC 1.A.9) family. Gamma-aminobutyric acid receptor (TC 1.A.9.5) subfamily. GABRA2 sub-subfamily.
細胞内局在	Cell junction > synapse > postsynaptic cell membrane. Cell membrane.

## 画像



**All lanes :** Anti-GABA A Receptor alpha 2/GABRA2 antibody (ab72445) at 1/1000 dilution

**Lane 1 :** Wild type Mouse brain lysates

**Lane 2 :** GABA A Receptor alpha 2/GABRA2 knockout mouse brain lysate

**Predicted band size:** 51 kDa

**Observed band size:** 51 kDa

**Please note:** All products are "FOR RESEARCH USE ONLY. NOT FOR USE IN DIAGNOSTIC PROCEDURES"

## Our Abpromise to you: Quality guaranteed and expert technical support

- Replacement or refund for products not performing as stated on the datasheet
- Valid for 12 months from date of delivery
- Response to your inquiry within 24 hours
- We provide support in Chinese, English, French, German, Japanese and Spanish
- Extensive multi-media technical resources to help you
- We investigate all quality concerns to ensure our products perform to the highest standards

If the product does not perform as described on this datasheet, we will offer a refund or replacement. For full details of the Abpromise, please visit <https://www.abcam.co.jp/abpromise> or contact our technical team.

#### **Terms and conditions**

---

- Guarantee only valid for products bought direct from Abcam or one of our authorized distributors