

Anti-GABA A Receptor alpha 1 antibody [EPR5401(2)] ab151573

リコンビナント RabMAb

1 References [画像数 11](#)

製品の概要

製品名	Anti-GABA A Receptor alpha 1 antibody [EPR5401(2)]
製品の詳細	Rabbit monoclonal [EPR5401(2)] to GABA A Receptor alpha 1
由来種	Rabbit
アプリケーション	適用あり: WB, IHC-P
種交差性	交差種: Human
免疫原	Synthetic peptide within Human GABA A Receptor alpha 1 aa 1-100. The exact sequence is proprietary.
ポジティブ・コントロール	WB: Human fetal brain, Human lung and Human cerebellum lysates; Human brain prepared in 1%SDS Hot lysis method. IHC-P: Human brain, colon, kidney, Ovarian carcinoma, spleen, cerebrum and glioma tissues.
特記事項	<p>This product is a recombinant monoclonal antibody, which offers several advantages including:</p> <ul style="list-style-type: none">- High batch-to-batch consistency and reproducibility- Improved sensitivity and specificity- Long-term security of supply- Animal-free production <p>For more information see here.</p> <p>Our RabMAb[®] technology is a patented hybridoma-based technology for making rabbit monoclonal antibodies. For details on our patents, please refer to RabMAb[®] patents.</p> <p>Mouse, Rat: We have preliminary internal testing data to indicate this antibody may not react with these species. Please contact us for more information.</p>

製品の特性

製品の状態	Liquid
保存方法	Shipped at 4°C. Store at +4°C short term (1-2 weeks). Upon delivery aliquot. Store at -20°C long term. Avoid freeze / thaw cycle.
バッファー	Preservative: 0.01% Sodium azide Constituents: 59% PBS, 40% Glycerol, 0.05% BSA
精製度	Protein A purified

ポリ/モノ	モノクローナル
クローン名	EPR5401(2)
アイソタイプ	IgG

アプリケーション

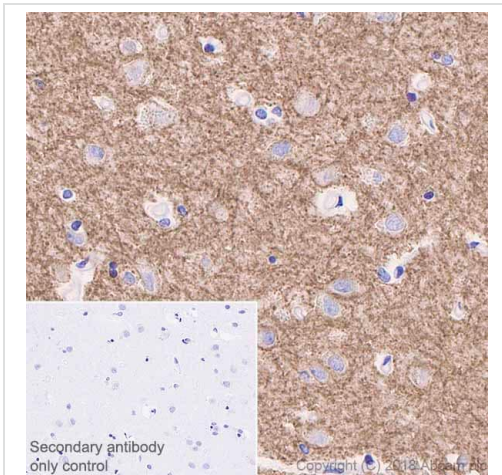
The Abpromise guarantee **Abpromise保証は、次のテスト済みアプリケーションにおけるab151573の使用に適用されず**
 アプリケーションノートには、推奨の開始希釈率がありますが、適切な希釈率につきましてはご検討ください。

アプリケーション	Abreviews	特記事項
WB		1/1000 - 1/10000. Detects a band of approximately 52 kDa (predicted molecular weight: 52 kDa). We recommend to try 1% SDS Hot lysis prepare method to get desired WB results. For Lysate preparation protocol, please refer to the protocol book in the protocol section and/or here (downloadable copy) .
IHC-P		1/1000. Perform heat mediated antigen retrieval with Tris/EDTA buffer pH 9.0 before commencing with IHC staining protocol. For unpurified use 1/50 - 1/100 See IHC antigen retrieval protocols .

ターゲット情報

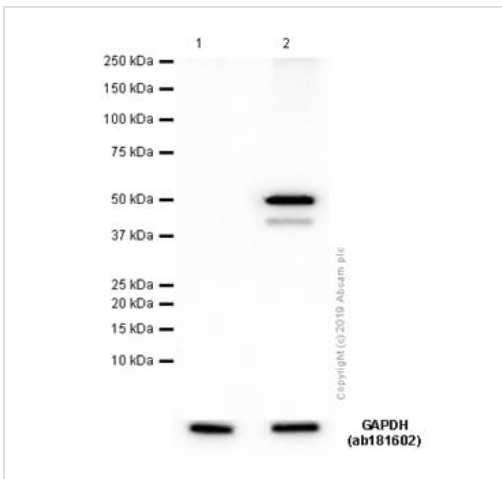
機能	GABA, the major inhibitory neurotransmitter in the vertebrate brain, mediates neuronal inhibition by binding to the GABA/benzodiazepine receptor and opening an integral chloride channel.
関連疾患	Defects in GABRA1 are the cause of childhood absence epilepsy type 4 (ECA4) [MIM:611136]. A subtype of idiopathic generalized epilepsy characterized by onset at age 6-7 years, frequent absence seizures (several per day) and bilateral, synchronous, symmetric 3-Hz spike waves on EEG. During adolescence, tonic-clonic and myoclonic seizures may develop. Absence seizures may either remit or persist into adulthood. Defects in GABRA1 are the cause of juvenile myoclonic epilepsy type 5 (EJM5) [MIM:611136]. A subtype of idiopathic generalized epilepsy. Patients have afebrile seizures only, with onset in adolescence (rather than in childhood) and myoclonic jerks which usually occur after awakening and are triggered by sleep deprivation and fatigue.
配列類似性	Belongs to the ligand-gated ion channel (TC 1.A.9) family. Gamma-aminobutyric acid receptor (TC 1.A.9.5) subfamily. GABRA1 sub-subfamily.
細胞内局在	Cell junction > synapse > postsynaptic cell membrane. Cell membrane.

画像



Immunohistochemistry (Formalin/PFA-fixed paraffin-embedded sections) - Anti-GABA A Receptor alpha 1 antibody [EPR5401(2)] (ab151573)

Immunohistochemistry (Formalin/PFA-fixed paraffin-embedded sections) analysis of Human cerebrum tissue sections labeling GABA A Receptor alpha 1 with Purified ab151573 at 1:1000 dilution (0.7 µg/ml). Heat mediated antigen retrieval was performed using **ab93684** (Tris/EDTA buffer, pH 9.0) ImmunoHistoProbe one step HRP Polymer (ready to use) was used as the secondary antibody. Negative control: PBS instead of the primary antibody. Hematoxylin was used as a counterstain



Western blot - Anti-GABA A Receptor alpha 1 antibody [EPR5401(2)] (ab151573)

All lanes : Anti-GABA A Receptor alpha 1 antibody [EPR5401(2)] (ab151573) at 1/1000 dilution

Lane 1 : Human brain prepared in RIPA lysis method

Lane 2 : Human brain prepared in 1% SDS Hot lysis method

Lysates/proteins at 15 µg per lane.

Secondary

All lanes : Goat Anti-Rabbit IgG (HRP) with minimal cross-reactivity with human IgG at 1/2000 dilution

Developed using the ECL technique.

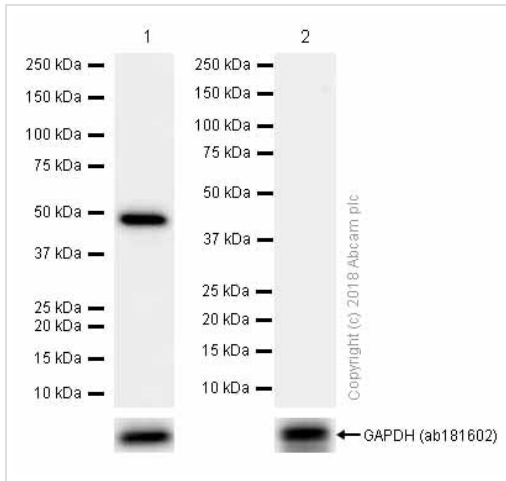
Predicted band size: 52 kDa

Observed band size: 52 kDa

Exposure time: 40 seconds

Blocking/Diluting buffer and concentration: 5% NFDm/TBST

We recommend to use 1% SDS Hot lysis prepare method to get desired Western Blot results.



Western blot - Anti-GABA A Receptor alpha 1 antibody [EPR5401(2)] (ab151573)

All lanes : Anti-GABA A Receptor alpha 1 antibody [EPR5401(2)] (ab151573) at 0.7 µg/ml (purified)

Lane 1 : Human brain lysates

Lane 2 : Human lung lysates - negative control

Lysates/proteins at 15 µg per lane.

Secondary

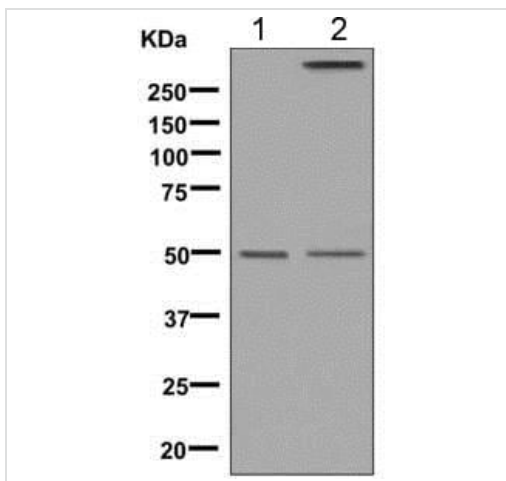
All lanes : Goat Anti-Rabbit IgG (HRP) with minimal cross-reactivity with human IgG at 1/2000 dilution

Predicted band size: 52 kDa

Blocking and diluting buffer: 5% NFDm/TBST.

Please note: Lysates prepared in 1%SDS Hot lysis method.

According to the paper (PMID: 29467616), brain is positive and lung is negative tissue.



Western blot - Anti-GABA A Receptor alpha 1 antibody [EPR5401(2)] (ab151573)

All lanes : Anti-GABA A Receptor alpha 1 antibody [EPR5401(2)] (ab151573) at 1/1000 dilution (unpurified)

Lane 1 : Human fetal brain lysate

Lane 2 : Human cerebellum lysate

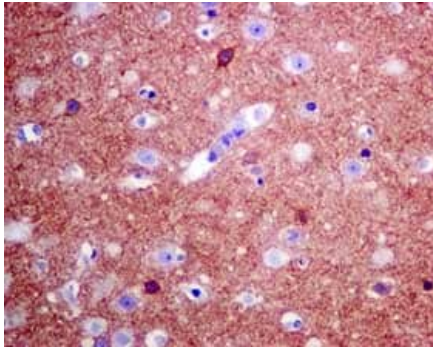
Lysates/proteins at 10 µg per lane.

Secondary

All lanes : Goat anti-rabbit HRP at 1/2000 dilution

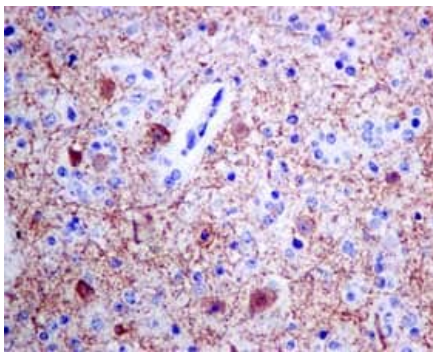
Predicted band size: 52 kDa

Please note: Lysates prepared in 1%SDS Hot lysis method.



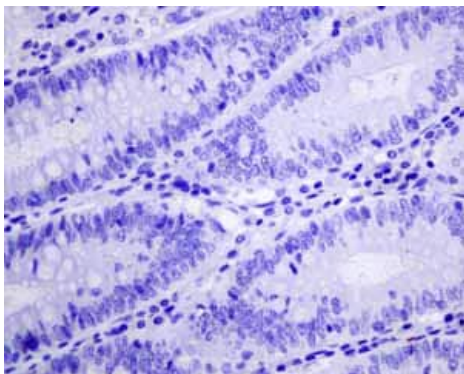
Immunohistochemistry (Formalin/PFA-fixed paraffin-embedded sections) - Anti-GABA A Receptor alpha 1 antibody [EPR5401(2)] (ab151573)

Immunohistochemical analysis of paraffin-embedded Human brain tissue labeling GABA A Receptor alpha 1 with unpurified ab151573 at 1/50 dilution.



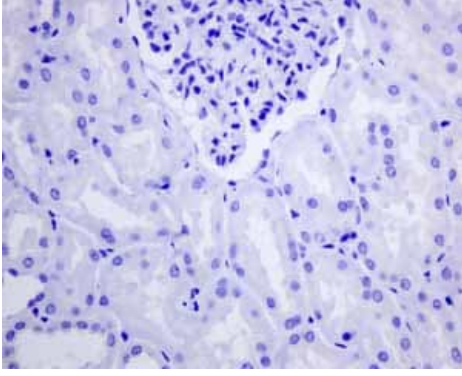
Immunohistochemistry (Formalin/PFA-fixed paraffin-embedded sections) - Anti-GABA A Receptor alpha 1 antibody [EPR5401(2)] (ab151573)

Immunohistochemical analysis of paraffin-embedded Human glioma tissue labeling GABA A Receptor alpha 1 with unpurified ab151573 at 1/50 dilution.



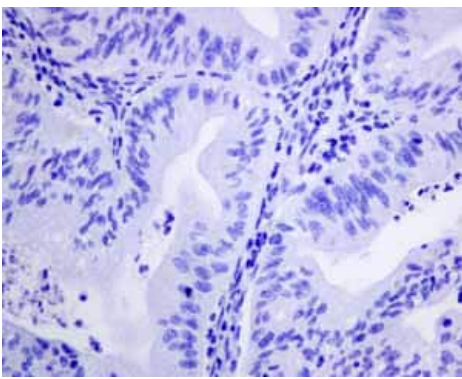
Immunohistochemistry (Formalin/PFA-fixed paraffin-embedded sections) - Anti-GABA A Receptor alpha 1 antibody [EPR5401(2)] (ab151573)

Immunohistochemical analysis of paraffin embedded normal Human colon tissue using unpurified ab151573 showing -ve staining.



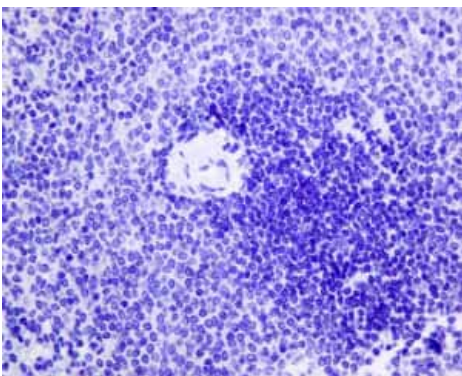
Immunohistochemistry (Formalin/PFA-fixed paraffin-embedded sections) - Anti-GABA A Receptor alpha 1 antibody [EPR5401(2)] (ab151573)

Immunohistochemical analysis of paraffin embedded normal Human kidney tissue using unpurified ab151573 showing -ve staining.



Immunohistochemistry (Formalin/PFA-fixed paraffin-embedded sections) - Anti-GABA A Receptor alpha 1 antibody [EPR5401(2)] (ab151573)

Immunohistochemical analysis of paraffin embedded Human Ovarian carcinoma tissue using unpurified ab151573 showing -ve staining.



Immunohistochemistry (Formalin/PFA-fixed paraffin-embedded sections) - Anti-GABA A Receptor alpha 1 antibody [EPR5401(2)] (ab151573)

Immunohistochemical analysis of paraffin embedded normal Human spleen tissue using unpurified ab151573 showing -ve staining.

Why choose a recombinant antibody?



Research with confidence
Consistent and reproducible results



Long-term and scalable supply
Recombinant technology



Success from the first experiment
Confirmed specificity



Ethical standards compliant
Animal-free production

Anti-GABA A Receptor alpha 1 antibody

[EPR5401(2)] (ab151573)

Please note: All products are "FOR RESEARCH USE ONLY. NOT FOR USE IN DIAGNOSTIC PROCEDURES"

Our Abpromise to you: Quality guaranteed and expert technical support

- Replacement or refund for products not performing as stated on the datasheet
- Valid for 12 months from date of delivery
- Response to your inquiry within 24 hours
- We provide support in Chinese, English, French, German, Japanese and Spanish
- Extensive multi-media technical resources to help you
- We investigate all quality concerns to ensure our products perform to the highest standards

If the product does not perform as described on this datasheet, we will offer a refund or replacement. For full details of the Abpromise, please visit <https://www.abcam.co.jp/abpromise> or contact our technical team.

Terms and conditions

- Guarantee only valid for products bought direct from Abcam or one of our authorized distributors