


### Anti-FSTL1/FRP antibody ab11805

★★★★☆ [1 Abreviews](#) [11 References](#) [画像数 1](#)

#### 製品の概要

製品名	Anti-FSTL1/FRP antibody
製品の詳細	Goat polyclonal to FSTL1/FRP
由来種	Goat
アプリケーション	<b>適用あり:</b> WB
種交差性	<b>交差種:</b> Human <b>交差が予測される動物種:</b> Cow, Cynomolgus monkey 
免疫原	Synthetic peptide corresponding to Human FSTL1/FRP aa 296-308 (C terminal). Sequence: C-TAEKTKRVSTKEI  (Peptide available as <a href="#">ab23213</a> )

 [Run BLAST with](#)

 [Run BLAST with](#)

#### 特記事項

The Life Science industry has been in the grips of a reproducibility crisis for a number of years. Abcam is leading the way in addressing this with our range of recombinant monoclonal antibodies and knockout edited cell lines for gold-standard validation. Please check that this product meets your needs before purchasing.

If you have any questions, special requirements or concerns, please send us an inquiry and/or contact our Support team ahead of purchase. Recommended alternatives for this product can be found below, along with publications, customer reviews and Q&As

#### 製品の特性

製品の状態	Liquid
保存方法	Shipped at 4°C. Upon delivery aliquot and store at -20°C. Avoid freeze / thaw cycles.
バッファー	pH: 7.30 Preservative: 0.02% Sodium azide Constituents: Tris buffered saline, 0.5% BSA
精製度	Immunogen affinity purified
特記事項 (精製)	Purified from goat serum by ammonium sulphate precipitation followed by antigen affinity chromatography using the immunizing peptide.
ポリ/モノ	ポリクローナル

アプリケーション

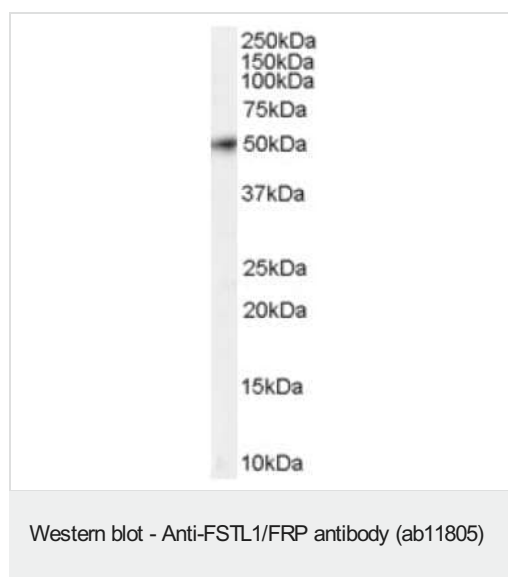
**The Abpromise guarantee**      **Abpromise保証は、次のテスト済みアプリケーションにおけるab11805の使用に適用されます**  
 アプリケーションノートには、推奨の開始希釈率がありますが、適切な希釈率につきましてはご検討ください。

アプリケーション	Abreviews	特記事項
WB	★★★★★ (1)	Use a concentration of 0.3 - 1 µg/ml. Detects a band of approximately 50 kDa (predicted molecular weight: 35 kDa). A 1 hour primary incubation is recommended for this product. The observed molecular weight corresponds to earlier findings in literature (Tanaka et al, Int Immunol. 1998 Sep;10(9):1305-14.

ターゲット情報

機能	May modulate the action of some growth factors on cell proliferation and differentiation. Binds heparin.
組織特異性	Overexpressed in synovial tissues from rheumatoid arthritis.
配列類似性	Contains 2 EF-hand domains. Contains 1 follistatin-like domain. Contains 1 Kazal-like domain. Contains 1 VWFC domain.
細胞内局在	Secreted.

画像



Anti-FSTL1/FRP antibody (ab11805) at 0.5 µg/ml + Human Placenta lysate (RIPA buffer, 35µg total protein per lane)

**Predicted band size:** 35 kDa

**Observed band size:** 50 kDa

Primary incubated for 1 hour. Detected by western blot using chemiluminescence.

**Please note:** All products are "FOR RESEARCH USE ONLY. NOT FOR USE IN DIAGNOSTIC PROCEDURES"

## **Our Abpromise to you: Quality guaranteed and expert technical support**

---

- Replacement or refund for products not performing as stated on the datasheet
- Valid for 12 months from date of delivery
- Response to your inquiry within 24 hours
  
- We provide support in Chinese, English, French, German, Japanese and Spanish
- Extensive multi-media technical resources to help you
- We investigate all quality concerns to ensure our products perform to the highest standards

If the product does not perform as described on this datasheet, we will offer a refund or replacement. For full details of the Abpromise, please visit <https://www.abcam.co.jp/abpromise> or contact our technical team.

## **Terms and conditions**

---

- Guarantee only valid for products bought direct from Abcam or one of our authorized distributors