

Anti-FPRL1/RFP antibody ab63022

6 References [画像数 3](#)

製品の概要

製品名	Anti-FPRL1/RFP antibody
製品の詳細	Rabbit polyclonal to FPRL1/RFP
由来種	Rabbit
特異性	This antibody recognizes human FPRL-1.
アプリケーション	適用あり: WB, Flow Cyt, ICC/IF
種交差性	交差種: Human
免疫原	Synthetic peptide corresponding to Human FPRL1/RFP conjugated to keyhole limpet haemocyanin.
ポジティブ・コントロール	HL60 cells and extracts from HL60 cells
特記事項	<p>The Life Science industry has been in the grips of a reproducibility crisis for a number of years. Abcam is leading the way in addressing this with our range of recombinant monoclonal antibodies and knockout edited cell lines for gold-standard validation. Please check that this product meets your needs before purchasing.</p> <p>If you have any questions, special requirements or concerns, please send us an inquiry and/or contact our Support team ahead of purchase. Recommended alternatives for this product can be found below, along with publications, customer reviews and Q&As</p>

製品の特性

製品の状態	Liquid
保存方法	Shipped at 4°C. Upon delivery aliquot and store at -20°C. Avoid freeze / thaw cycles.
精製度	Protein G purified
ポリ/モノ	ポリクローナル
アイソタイプ	IgG

アプリケーション

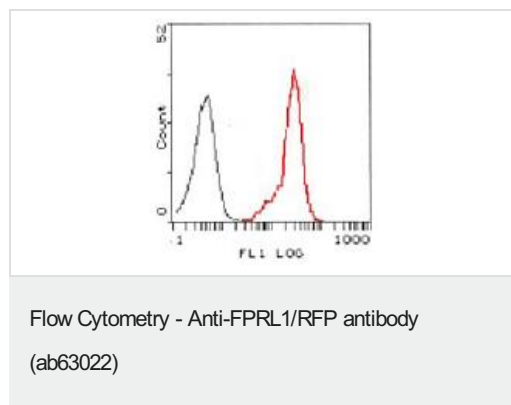
The Abpromise guarantee **Abpromise保証は、**次のテスト済みアプリケーションにおけるab63022の使用に適用されます
 アプリケーションノートには、推奨の開始希釈率がありますが、適切な希釈率につきましてはご検討ください。

アプリケーション	Abreviews	特記事項
WB		1/5000. Detects a band of approximately 38 kDa (predicted molecular weight: 39 kDa).
Flow Cyt		1/100. ab171870 - Rabbit polyclonal IgG, is suitable for use as an isotype control with this antibody.
ICC/IF		1/500.

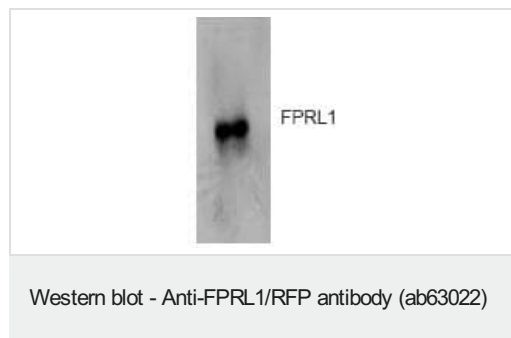
ターゲット情報

機能	Low affinity receptor for N-formyl-methionyl peptides, which are powerful neutrophils chemotactic factors. Binding of FMLP to the receptor causes activation of neutrophils. This response is mediated via a G-protein that activates a phosphatidylinositol-calcium second messenger system. The activation of LXA4R could result in an anti-inflammatory outcome counteracting the actions of proinflammatory signals such as LTB4 (leukotriene B4).
組織特異性	Expressed abundantly in the lung and neutrophils. Also found in the spleen and testis.
配列類似性	Belongs to the G-protein coupled receptor 1 family.
細胞内局在	Cell membrane.

画像



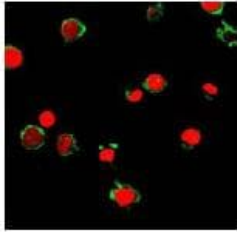
Flow cytometric analysis of HL60 cells using ab63022 at 1:100 (red) compared to a non-specific negative control antibody (black).



Anti-FPRL1/RFP antibody (ab63022) at 1/5000 dilution + Extracts from HL60 cells.

Predicted band size: 39 kDa

Observed band size: 38 kDa



Immunofluorescent analysis of HL60 cells using ab63022 (green) at 1:500. Nucleus have been labeled with PI (red).

Immunocytochemistry/ Immunofluorescence - Anti-FPRL1/RFP antibody (ab63022)

Please note: All products are "FOR RESEARCH USE ONLY. NOT FOR USE IN DIAGNOSTIC PROCEDURES"

Our Abpromise to you: Quality guaranteed and expert technical support

- Replacement or refund for products not performing as stated on the datasheet
- Valid for 12 months from date of delivery
- Response to your inquiry within 24 hours
- We provide support in Chinese, English, French, German, Japanese and Spanish
- Extensive multi-media technical resources to help you
- We investigate all quality concerns to ensure our products perform to the highest standards

If the product does not perform as described on this datasheet, we will offer a refund or replacement. For full details of the Abpromise, please visit <https://www.abcam.co.jp/abpromise> or contact our technical team.

Terms and conditions

- Guarantee only valid for products bought direct from Abcam or one of our authorized distributors