




### Anti-FOXP2 antibody - C-terminal ab1307

★★★★★ [7 Abreviews](#) [28 References](#) [画像数 1](#)

#### 製品の概要

製品名	Anti-FOXP2 antibody - C-terminal
製品の詳細	Goat polyclonal to FOXP2 - C-terminal
由来種	Goat
特異性	This antibody is expected to recognise all three reported isoforms (NP_055306.1; NP_683696.2; NP_683697.1).
アプリケーション	<b>適用あり:</b> WB
種交差性	<b>交差種:</b> Human <b>交差が予測される動物種:</b> Mouse, Rat, Cow, Dog, Pig, Xenopus laevis, Chimpanzee, Rhesus monkey, Gorilla 
免疫原	Synthetic peptide corresponding to Human FOXP2 aa 703-715 (C terminal) (Cysteine residue). Sequence: C-REIEEEPLSEDLE  Database link: <a href="#">O15409</a> (Peptide available as <a href="#">ab22800</a> ) <div>  <a href="#">Run BLAST with</a>  <a href="#">Run BLAST with</a> </div>
ポジティブ・コントロール	WB: Human cerebellum cell lysate.
特記事項	<p>The Life Science industry has been in the grips of a reproducibility crisis for a number of years. Abcam is leading the way in addressing this with our range of recombinant monoclonal antibodies and knockout edited cell lines for gold-standard validation. Please check that this product meets your needs before purchasing.</p> <p>If you have any questions, special requirements or concerns, please send us an inquiry and/or contact our Support team ahead of purchase. Recommended alternatives for this product can be found below, along with publications, customer reviews and Q&amp;As</p>

#### 製品の特性

製品の状態	Liquid
保存方法	Shipped at 4°C. Upon delivery aliquot and store at -20°C. Avoid freeze / thaw cycles.
バッファー	pH: 7.30 Preservative: 0.02% Sodium azide

	Constituents: 0.05% Tris, 0.5% BSA
精製度	Immunogen affinity purified
特記事項 (精製)	Purified from goat serum by ammonium sulphate precipitation followed by antigen affinity chromatography using the immunizing peptide.
ポリモノ	ポリクローナル
アイソタイプ	IgG

## アプリケーション

**The Abpromise guarantee**      **Abpromise保証は、次のテスト済みアプリケーションにおけるab1307の使用に適用されます**  
 アプリケーションノートには、推奨の開始希釈率がありますが、適切な希釈率につきましてはご確認ください。

アプリケーション	Abreviews	特記事項
WB	★★★★★ (1)	Use a concentration of 0.5 - 2 µg/ml. Detects a band of approximately 80 kDa (predicted molecular weight: 79.9 kDa). 1 hour primary incubation is recommended for this product.

## ターゲット情報

機能	Transcriptional repressor that may play a role in the specification and differentiation of lung epithelium. May also play a role in developing neural, gastrointestinal and cardiovascular tissues. Can act with CTBP1 to synergistically repress transcription but CTBP1 is not essential. Involved in neural mechanisms mediating the development of speech and language.
組織特異性	Isoform 1 and isoform 6 are expressed in adult and fetal brain, caudate nucleus and lung.
関連疾患	Defects in FOXP2 are the cause of speech-language disorder 1 (SPCH1) [MIM:602081]; also known as autosomal dominant speech and language disorder with orofacial dyspraxia. Affected individuals have a severe impairment in the selection and sequencing of fine orofacial movements, which are necessary for articulation. They also show deficits in several facets of language processing (such as the ability to break up words into their constituent phonemes) and grammatical skills. Note=A chromosomal aberration involving FOXP2 is a cause of severe speech and language impairment. Translocation t(5;7)(q22;q31.2).
配列類似性	Contains 1 C2H2-type zinc finger. Contains 1 fork-head DNA-binding domain.
発生段階	Expressed in the brain at 15 and 22 weeks of gestation, with a pattern of strong cortical, basal ganglia, thalamic and cerebellar expression. Highly expressed in the head and tail of nucleus caudatus and putamen. Restricted expression within the globus pallidus, with high levels in the pars interna, which provides the principal source of output from the basal ganglia to the nucleus centrum medianum thalami (CM) and the major motor relay nuclei of the thalamus. In the thalamus, present in the CM and nucleus medialis dorsalis thalami. Lower levels are observed in the nuclei anterior thalami, dorsal and ventral, and the nucleus parafascicularis thalami. Expressed in the ventrobasal complex comprising the nucleus ventralis posterior lateralis/medialis. The ventral tier of the thalamus exhibits strong expression, including nuclei ventralis anterior, lateralis and posterior lateralis pars oralis. Also expressed in the nucleus subthalamicus bilaterally and in the nucleus ruber.

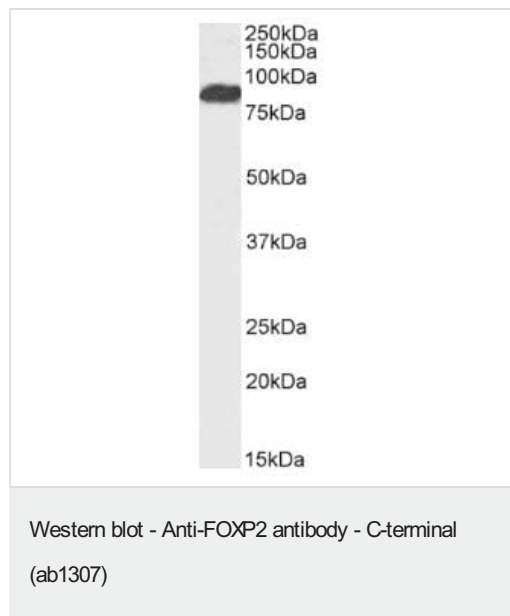
## ドメイン

The leucine-zipper is required for dimerization and transcriptional repression.

## 細胞内局在

Nucleus.

## 画像



Anti-FOXP2 antibody - C-terminal (ab1307) at 2 µg/ml + Human cerebellum whole cell lysate

Developed using the ECL technique.

**Predicted band size: 79.9 kDa**

**Please note:** All products are "FOR RESEARCH USE ONLY. NOT FOR USE IN DIAGNOSTIC PROCEDURES"

## Our Abpromise to you: Quality guaranteed and expert technical support

- Replacement or refund for products not performing as stated on the datasheet
- Valid for 12 months from date of delivery
- Response to your inquiry within 24 hours
- We provide support in Chinese, English, French, German, Japanese and Spanish
- Extensive multi-media technical resources to help you
- We investigate all quality concerns to ensure our products perform to the highest standards

If the product does not perform as described on this datasheet, we will offer a refund or replacement. For full details of the Abpromise, please visit <https://www.abcam.co.jp/abpromise> or contact our technical team.

## Terms and conditions

- Guarantee only valid for products bought direct from Abcam or one of our authorized distributors