

Anti-FOXO3A (phospho S253) antibody ab47285

★★★★★ [8 Abreviews](#) [51 References](#) [画像数 4](#)

製品の概要

製品名	Anti-FOXO3A (phospho S253) antibody
製品の詳細	Rabbit polyclonal to FOXO3A (phospho S253)
由来種	Rabbit
アプリケーション	適用あり: WB, ELISA, IHC-P, ICC/IF, IHC-Fr
種交差性	交差種: Mouse, Rat, Human
免疫原	Synthetic peptide corresponding to Human FOXO3A (phospho S253). Database link: O43524
特記事項	<p>The Life Science industry has been in the grips of a reproducibility crisis for a number of years. Abcam is leading the way in addressing this with our range of recombinant monoclonal antibodies and knockout edited cell lines for gold-standard validation. Please check that this product meets your needs before purchasing.</p> <p>If you have any questions, special requirements or concerns, please send us an inquiry and/or contact our Support team ahead of purchase. Recommended alternatives for this product can be found below, along with publications, customer reviews and Q&As</p>

製品の特性

製品の状態	Liquid
保存方法	Shipped at 4°C. Upon delivery aliquot and store at -20°C. Avoid freeze / thaw cycles.
バッファー	pH: 7 Preservative: 0.02% Sodium azide Constituents: PBS, 50% Glycerol, 0.87% Sodium chloride
精製度	Immunogen affinity purified
特記事項(精製)	The antibody was affinity-purified from rabbit antiserum by affinity-chromatography using epitope-specific phosphopeptide. The antibody against non-phosphopeptide was removed by chromatography using non-phosphopeptide corresponding to the phosphorylation site.
ポリ/モノ	ポリクローナル
アイソタイプ	IgG

アプリケーション

The Abpromise guarantee

Abpromise保証は、次のテスト済みアプリケーションにおけるab47285の使用に適用されます

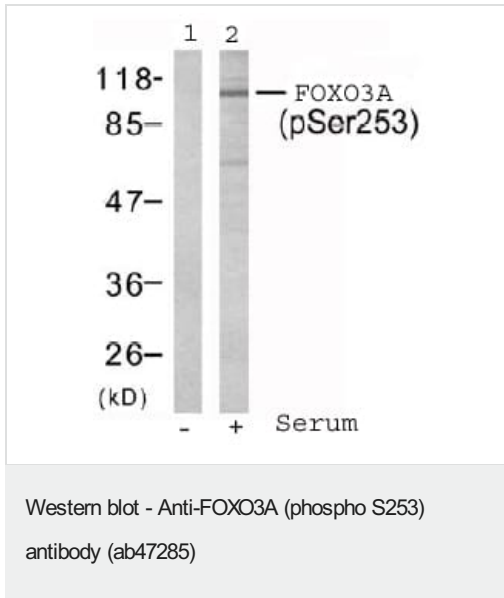
アプリケーションノートには、推奨の開始希釈率がありますが、適切な希釈率につきましてはご検討ください。

アプリケーション	Abreviews	特記事項
WB	★★★★★ (4)	1/500 - 1/1000. Detects a band of approximately 67, 105 kDa (predicted molecular weight: 71 kDa).
ELISA		Use at an assay dependent concentration.
IHC-P	★★★★★ (1)	Use at an assay dependent concentration.
ICC/IF	★★★★★ (2)	Use a concentration of 1 µg/ml.
IHC-Fr	★★★★★ (1)	Use at an assay dependent concentration. See Abreview.

ターゲット情報

機能	Transcriptional activator which triggers apoptosis in the absence of survival factors, including neuronal cell death upon oxidative stress. Recognizes and binds to the DNA sequence 5'-[AG]TAAA[TC]A-3'.
組織特異性	Ubiquitous.
関連疾患	Note=A chromosomal aberration involving FOXO3 is found in secondary acute leukemias. Translocation t(6;11)(q21;q23) with MLL/HRX.
配列類似性	Contains 1 fork-head DNA-binding domain.
翻訳後修飾	In the presence of survival factors such as IGF-1, phosphorylated on Thr-32 and Ser-253 by AKT1/PKB. This phosphorylated form then interacts with 14-3-3 proteins and is retained in the cytoplasm. Survival factor withdrawal induces dephosphorylation and promotes translocation to the nucleus where the dephosphorylated protein induces transcription of target genes and triggers apoptosis. Although AKT1/PKB doesn't appear to phosphorylate Ser-315 directly, it may activate other kinases that trigger phosphorylation at this residue. Phosphorylated by STK4 on Ser-209 upon oxidative stress, which leads to dissociation from YWHAB/14-3-3-beta and nuclear translocation. Phosphorylated by PIM1.
細胞内局在	Cytoplasm > cytosol. Nucleus. Translocates to the nucleus upon oxidative stress and in the absence of survival factors.

画像



All lanes : Anti-FOXO3A (phospho S253) antibody (ab47285) at 1/500 dilution

Lane 1 : extracts from NIH/3T3 cells untreated

Lane 2 : extracts from NIH/3T3 cells treated with serum

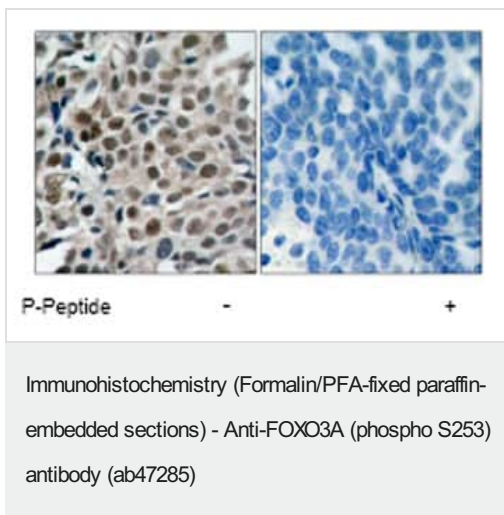
Lysates/proteins at 30 µg per lane.

Predicted band size: 71 kDa

Observed band size: 105,67 kDa

Serum treatment:

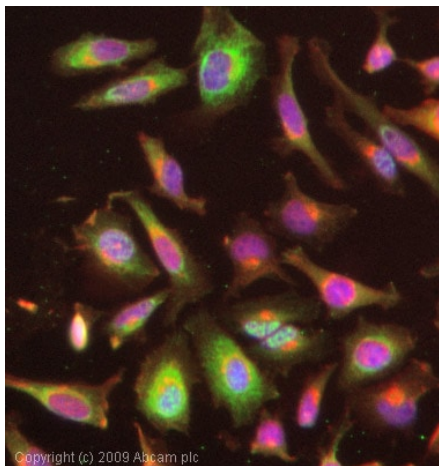
1. Add fresh basic medium to the vessels and starve the cells for 18-24 hours.
2. Drain the cultured medium, add growth medium and basic medium containing 10% serum to the vessels.



Immunohistochemical analysis of paraffin-embedded human breast carcinoma tissue using ab47285 at a 1/50 dilution.

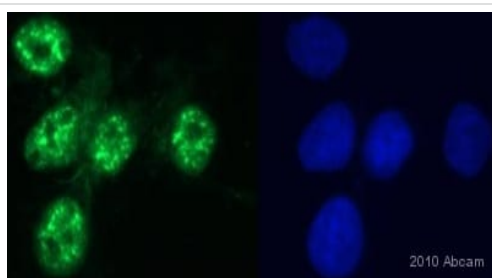
Left image : Untreated

Right image : Treated with P-Peptide



Immunocytochemistry/ Immunofluorescence - Anti-FOXO3A (phospho S253) antibody (ab47285)

ICC/IF image of ab47285 stained HeLa cells. The cells were 4% PFA fixed (10 min) and then incubated in 1%BSA / 10% normal goat serum / 0.3M glycine in 0.1% PBS-Tween for 1h to permeabilise the cells and block non-specific protein-protein interactions. The cells were then incubated with the antibody (ab47285, 1µg/ml) overnight at +4°C. The secondary antibody (green) was Alexa Fluor® 488 goat anti-rabbit IgG (H+L) used at a 1/1000 dilution for 1h. Alexa Fluor® 594 WGA was used to label plasma membranes (red) at a 1/200 dilution for 1h. DAPI was used to stain the cell nuclei (blue) at a concentration of 1.43µM.



Immunocytochemistry/ Immunofluorescence - Anti-FOXO3A (phospho S253) antibody (ab47285)

This image is courtesy of an anonymous Abreview.

ab47285 at 1/200 dilution staining FOXO3A in human 293FT cells by Immunocytochemistry/ Immunofluorescence. Cells were fixed in formaldehyde, permeabilized in 0.5% Triton X-100 and then blocked in 5% BSA for 1 hour at 25°C. The primary antibody was used at 1/200 dilution in PBS and incubated with sample at 4°C for 12 hours. An Alexa Fluor® 488 conjugated Goat polyclonal to rabbit IgG was used as secondary at 1/500 dilution. Image show green staining with ab47285 and blue with DAPI.

Please note: All products are "FOR RESEARCH USE ONLY. NOT FOR USE IN DIAGNOSTIC PROCEDURES"

Our Abpromise to you: Quality guaranteed and expert technical support

- Replacement or refund for products not performing as stated on the datasheet
- Valid for 12 months from date of delivery
- Response to your inquiry within 24 hours
- We provide support in Chinese, English, French, German, Japanese and Spanish
- Extensive multi-media technical resources to help you
- We investigate all quality concerns to ensure our products perform to the highest standards

If the product does not perform as described on this datasheet, we will offer a refund or replacement. For full details of the Abpromise, please visit <https://www.abcam.co.jp/abpromise> or contact our technical team.

Terms and conditions

- Guarantee only valid for products bought direct from Abcam or one of our authorized distributors